



## **RUSSELL SIMPSON**

Stylish two bedroom flat with  
communal garden access to rent in  
South Kensington

CORNWALL GARDENS  
SOUTH KENSINGTON SW7

# Cornwall Gardens

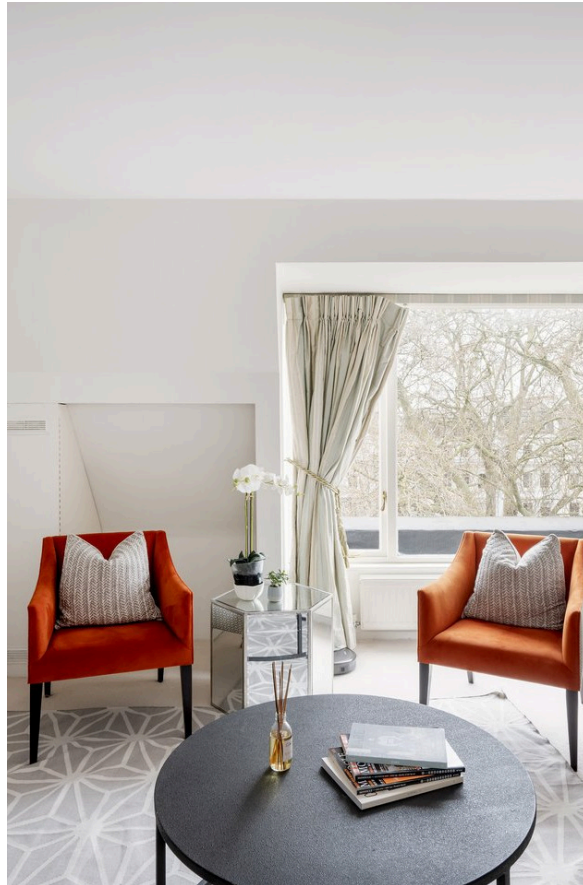
# Let

BEDROOMS 2	INTERNAL 731 SQ FT	OUTDOOR —	FURNISHED STATUS Furnished
BATHROOMS 1	67 SQM	EPC C	COUNCIL TAX RBKC, F

# The Property

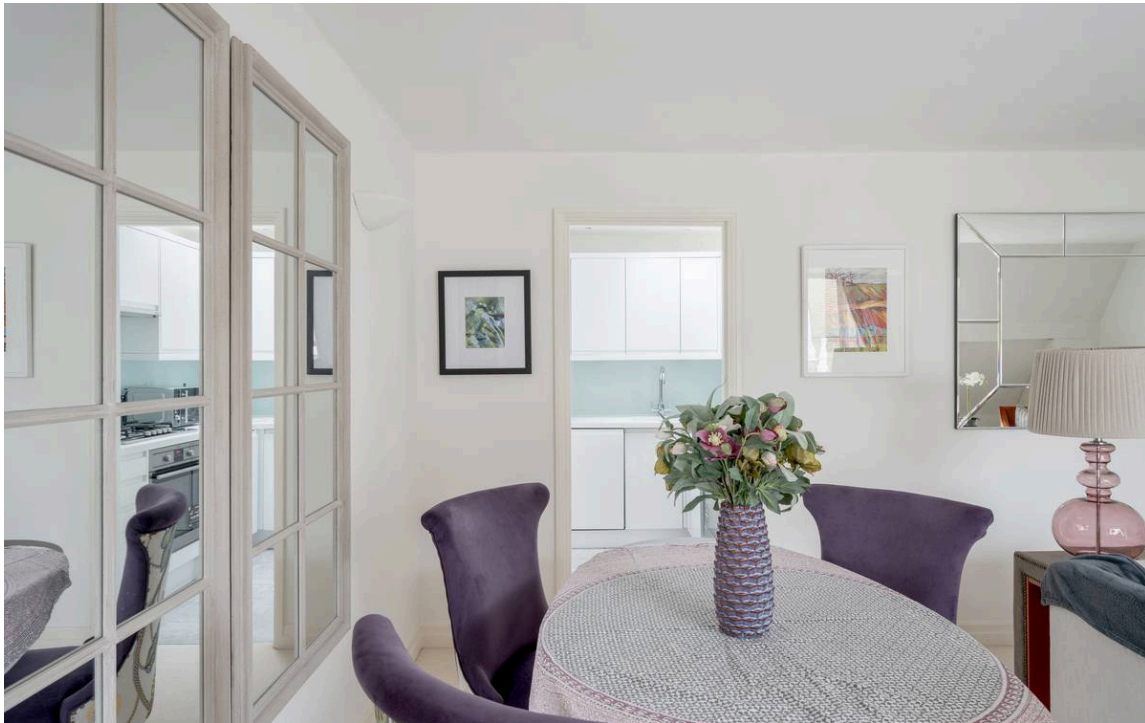
Well-designed flat in excellent condition on a sought-after square near Gloucester Road station

The flat has been decorated in a contemporary fashion, resulting in spacious and stylish interiors in excellent condition.



img 2

Seating Area



## Indoor Spaces

Stepping into the flat on the fifth floor, the entrance hall leads through to a spacious reception room. As well as wide window with views over the square, this room has enough space for separate dining and seating areas. In addition, it opens directly onto a fitted kitchen, for added convenience.

---

img 1

Dining

img 2

Kitchen





## The Bedrooms

The other side of the flat features a pair of bedrooms, both with south-facing windows and inbuilt storage space. Opposite is a bathroom with a bath.

---

img 1

Principal Bedroom

img 2

Double Bedroom





## The Neighbourhood

The building has a lift and a private communal garden that residents can use.

Cornwall Gardens is a beautiful garden square in South Kensington, lined with Grade II listed white stucco townhouses. Over the years, it has been home to numerous celebrated figures, including the playwright Sir Terence Rattigan, the actress Dame Diana Rigg, and the designer Sir Hardy Amies. From here, Gloucester Road underground station is a short walk away. The restaurants and shops of Kensington High Street are also nearby. Furthermore, the open spaces of Hyde Park and Kensington Palace Gardens are close, along with the world-class cultural institutions of South Kensington.

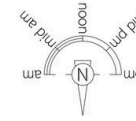
Cornwall Gardens,  
SW7

**Approximate area**  
67.9 sq m / 731 sq ft

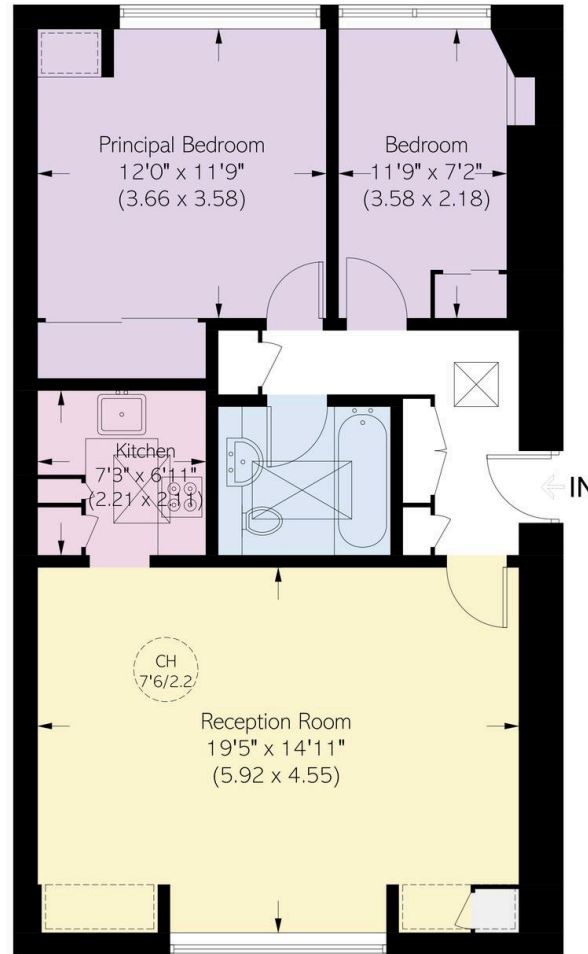
**Including limited use area**  
(2.6 sq m / 28 sq ft)

**RUSSELL  
SIMPSON**

This plan is for layout guidance only.  
Not drawn to scale unless stated. Windows  
and door openings are approximate. Whilst  
every care is taken in the preparation of this  
plan, please check all dimensions, shapes,  
and compass bearings before making any  
decisions reliant upon them.



= Reduced head height below 1.5m



Fifth Floor

**RUSSELL  
SIMPSON**

---

## Contact Us

+44 (0) 20 7225 0277

Contact us

[info@russellsimpson.co.uk](mailto:info@russellsimpson.co.uk)

---

## Sydney Street

+44 (0) 20 7225 0277

151A Sydney Street

London

SW3 6NT

[chelsea@russellsimpson.co.uk](mailto:chelsea@russellsimpson.co.uk)

---

## Kensington Square

+44 (0) 20 3761 9691

13 Kensington Square

London

W8 5HD

[kensington@russellsimpson.co.uk](mailto:kensington@russellsimpson.co.uk)