



## **RUSSELL SIMPSON**

Newly decorated and carpeted South  
Kensington flat with private garden  
access

CORNWALL GARDENS  
SOUTH KENSINGTON SW7

# Cornwall Gardens

Let

BEDROOMS 3	INTERNAL  830 <small>SQ FT</small>  77 <small>SQM</small>	OUTDOOR  —	FURNISHED STATUS  Part Furnished
BATHROOMS 2		EPC C	COUNCIL TAX RBKC, G

# The Property

Three bedroom flat with rounded tower reception on a prestigious address near Gloucester Road station



img 2

Kitchen

# Indoor Spaces

Entering the flat on the third floor, the front hall leads through to spacious reception room. Occupying the tower at the corner of the building, with full-length sash windows set into a rounded bay, this creates a bright and beautiful room. Next door is a fitted kitchen.

The property also contains three bedrooms, two of them with considerable built-in storage. In addition, there is a shared bathroom, a guest WC and additional storage space in the corridor.



img 1

Bathroom

img 2

Principal Bedroom





## The Neighbourhood

Residents have the right to access the private communal garden to the west of the building.

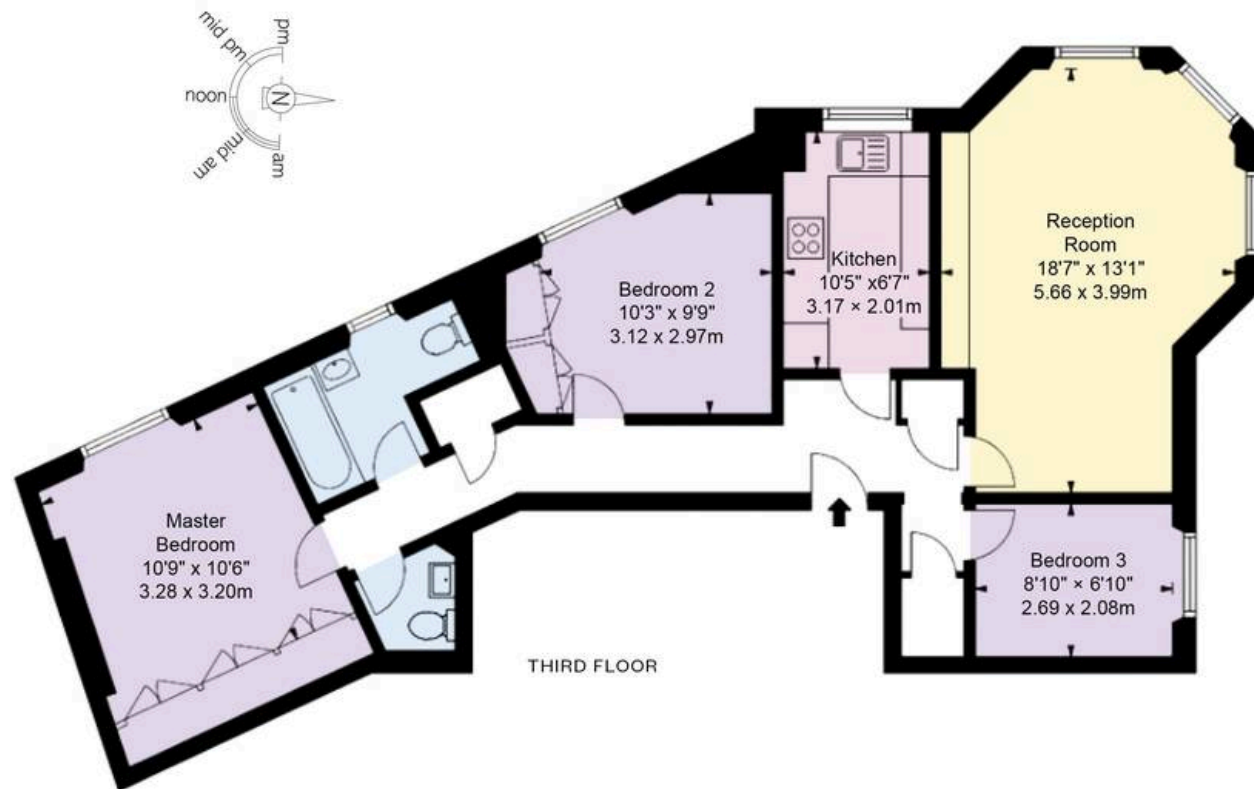
Cornwall Gardens is a beautiful garden square in South Kensington, lined with Grade II listed white stucco townhouses. Over the years, the square has been home to numerous celebrated figures, including the playwright Sir Terence Rattigan, the actress Dame Diana Rigg, and the designer Sir Hardy Amies. From here, Gloucester Road underground station is a short walk away. In addition, the restaurants and shops of Kensington High Street are nearby. The open spaces of Hyde Park and Kensington Palace Gardens are also close, and so too the world-class cultural institutions of South Kensington.

Cornwall Gardens  
SW7

**Approx Gross Internal Area**  
830 sq ft / 77.11 sq m

**RUSSELL  
SIMPSON**

This plan is for layout guidance only. Not drawn to scale unless stated. Windows and door openings are approximate. Whilst every care is taken in the preparation of this plan. Please check all dimensions, shapes, and compass bearings before making any decisions reliant upon them.



**RUSSELL  
SIMPSON**

---

## Contact Us

+44 (0) 20 7225 0277

151A Sydney Street  
London  
SW3 6NT

[chelsea@russellsimpson.co.uk](mailto:chelsea@russellsimpson.co.uk)

In accordance with the Property Mis-Description Act 1991, the following details have been prepared in good faith, and are not intended to constitute part of an offer or contract. Any information contained herein (whether in the text, plans or photographs) is given in good faith but should not be relied upon as being a statement of representation of fact. Nothing in these Particulars shall be deemed to be a statement that the property is in good condition or otherwise nor that any services or facilities are in good working order. Any measurements of distances referred to herein are approximate only. October 2021