



RUSSELL SIMPSON

Superlative two-bedroom flat with a balcony to rent on a prestigious South Kensington square

CORNWALL GARDENS
SOUTH KENSINGTON SW7

Cornwall Gardens

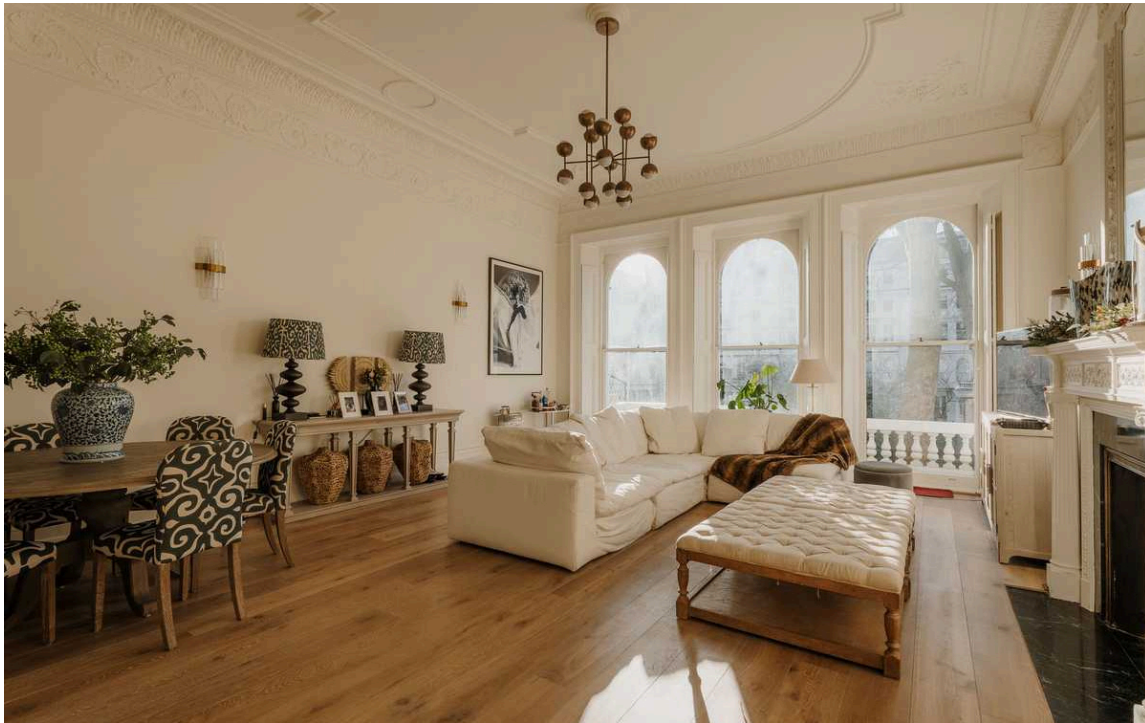
£2,050 P/W

BEDROOMS 2	INTERNAL 1,137 <small>SQ FT</small>	OUTDOOR 138 <small>SQ FT</small>	FURNISHED STATUS Unfurnished
BATHROOMS 2	105 <small>SQM</small>	EPC C	COUNCIL TAX RBKC, G



The Property

Lofty flat with elegant interiors in a grand white stucco townhouse close to Gloucester Road station



Indoor Spaces

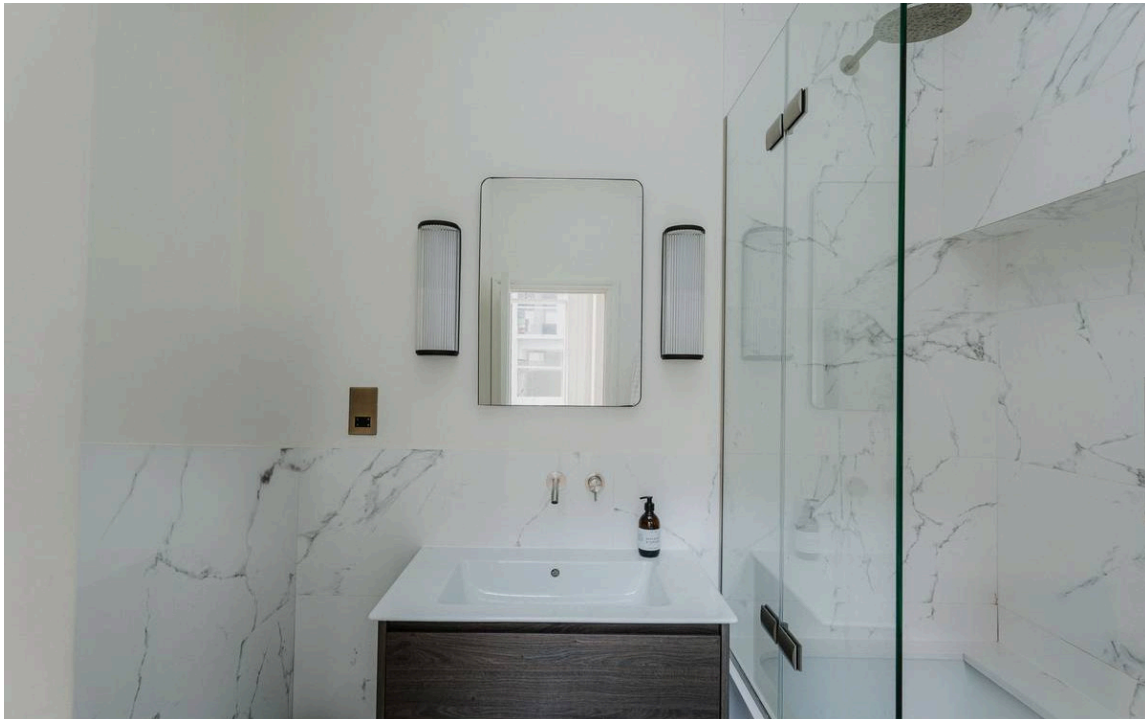
Stepping into the flat on the first floor, the entrance hall leads to an impressive reception room. This includes high ceilings and three full-length south-facing sash windows, resulting in a bright and beautiful space. A moulded ceiling, elegant cornice and ornate fireplace add to the sense of splendour. As well as separate dining and seating areas, this room flows through to a convenient kitchen with fitted units.





The Bedrooms

The other side of the flat features a pair of bedrooms, one of them with inbuilt wardrobe space. The bedrooms share a bathroom with a bath, while a second bathroom completes the flat.



The Design

Wooden floors and panelled doors throughout add to the sense of taste and harmony.





The Neighbourhood

The flat includes a south-facing balcony with beautiful views over the garden square. Residents also have access to the square.

Cornwall Gardens is a prestigious garden square in South Kensington, lined with Grade II listed terraces with stucco facades. Over the years, it has been home to numerous celebrated figures, including the playwright Sir Terence Rattigan, the actress Dame Diana Rigg, and the designer Sir Hardy Amies.

From here, Gloucester Road underground station is a short walk away. The restaurants and shops of Kensington High Street are also nearby. Furthermore, the open spaces of Hyde Park and Kensington Palace Gardens are close, along with the world-class cultural institutions of South Kensington.

Cornwall Gardens,
SW7

Approx Gross Internal Area
1,137 sq ft / 105.60 sq m

**RUSSELL
SIMPSON**



FIRST FLOOR

This plan is for layout guidance only. Not drawn to scale unless stated. Windows and door openings are approximate. Whilst every care is taken in the preparation of this plan. Please check all dimensions, shapes, and compass bearings before making any decisions reliant upon them.

**RUSSELL
SIMPSON**

Contact Us

+44 (0) 20 7225 0277

Contact us

info@russellsimpson.co.uk

Sydney Street

+44 (0) 20 7225 0277

151A Sydney Street
London
SW3 6NT

chelsea@russellsimpson.co.uk

Kensington Square

+44 (0) 20 3761 9691

13 Kensington Square
London
W8 5HD

kensington@russellsimpson.co.uk