



## **RUSSELL SIMPSON**

Bright and stylish one bedroom flat  
to rent in Earls Court

COLLINGHAM ROAD  
EARLS COURT SW5

# Collingham Road

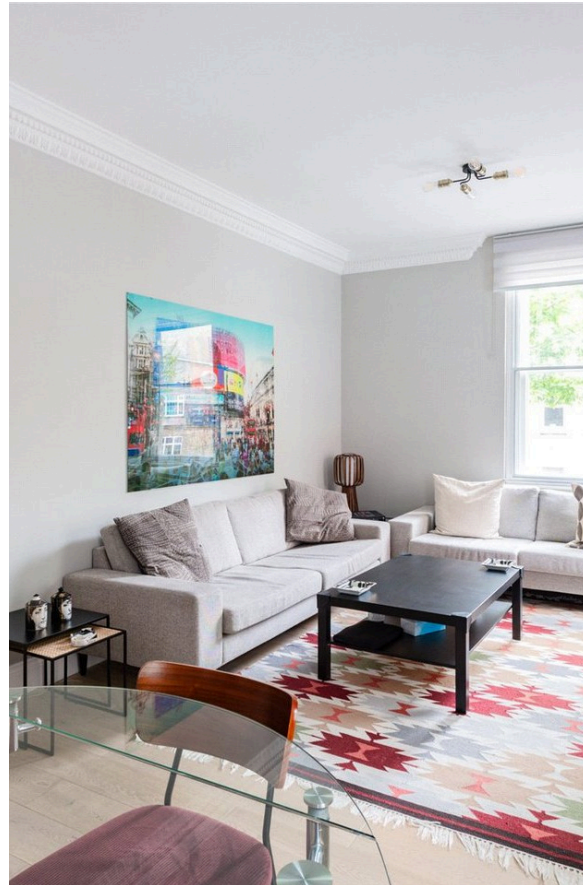
# Let

BEDROOMS 1	INTERNAL 618 <sub>SQ FT</sub>	OUTDOOR —	FURNISHED STATUS Furnished
BATHROOMS 1	57 <sub>SQM</sub>	EPC C	COUNCIL TAX RBKC, G

# The Property

Well-proportioned flat in a beautiful building on the corner of a prestigious garden square

The flat is presented in good condition. Wooden floors and windows on three sides give it a bright and relaxed atmosphere.



img 1

Kitchen

img 2

Reception Room



## Indoor Spaces

Entering the flat on the first floor, the front hall leads through to a spacious reception room. This is a well-lit space, thanks to south-facing sash windows, a double aspect and high ceilings with an elegant cornice. In addition, it has enough room for separate dining and seating areas.

## The Bedrooms

The other side of the flat features a bedroom with inbuilt storage. In between is a fitted kitchen with a breakfast bar and beautiful floor tiles, as well as a bathroom with a bath.



img 2

Double Bedroom



## The Neighbourhood

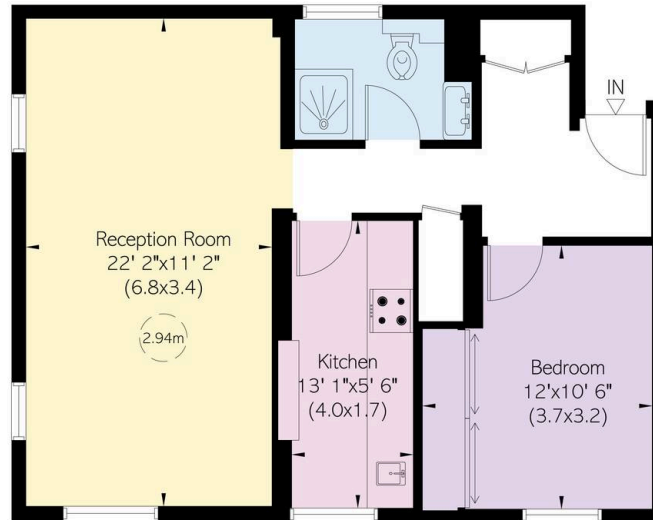
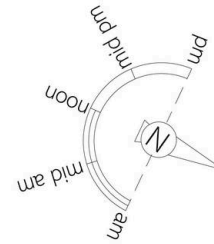
The flat occupies the corner of Collingham Road and Courtfield Gardens in South Kensington. The latter is a prestigious garden square, lined with tall terrace houses in the Italianate style, built between 1875 and 1881. From here, Gloucester Road underground station is a short walk away, while Earl's Court station is also close. In addition, the world-class museums and cultural venues of South Kensington are within easy reach.

Asburn House,  
Collingham Road, SW5

**RUSSELL  
SIMPSON**

**Approximate Internal Area**  
618 sq ft / 57 sq m

This plan is for layout guidance only. Not drawn to scale unless stated. Windows and door openings are approximate. Whilst every care is taken in the preparation of this plan, please check all dimensions, shapes, and compass bearings before making any decisions reliant upon them.



First Floor

**RUSSELL  
SIMPSON**

---

## Contact Us

+44 (0) 20 7225 0277

Contact us

[info@russellsimpson.co.uk](mailto:info@russellsimpson.co.uk)

---

## Sydney Street

+44 (0) 20 7225 0277

151A Sydney Street  
London  
SW3 6NT

[chelsea@russellsimpson.co.uk](mailto:chelsea@russellsimpson.co.uk)

---

## Kensington Square

+44 (0) 20 3761 9691

13 Kensington Square  
London  
W8 5HD

[kensington@russellsimpson.co.uk](mailto:kensington@russellsimpson.co.uk)