



## **RUSSELL SIMPSON**

Superb four-bedroom lateral flat in  
prestigious Marylebone mansion  
block

CHILTERN COURT  
MARYLEBONE NW1

Chiltern Court

£2,500 <sub>P/W</sub>

BEDROOMS 4	INTERNAL  1,834 <sub>SQ FT</sub>  170 <sub>SQM</sub>	OUTDOOR  —	FURNISHED STATUS  Unfurnished
BATHROOMS 2		EPC D	COUNCIL TAX Westminster City, G

## The Property

A charming four-bedroom lateral flat within the distinguished Chiltern Court mansion block, accessed via lift with porter.

The herringbone wooden flooring creates continuity throughout, while abundant natural light from generous windows creates a bright and welcoming atmosphere. The flat retains charming period features including high ceilings, elegant window proportions, and classic architectural detailing typical of this distinguished mansion block





## The Reception Room

Stepping into this well-proportioned flat, you enter a bright hallway leading to the generous reception room. This impressive space benefits from large multi-paned windows that flood the room with natural light, elegant herringbone wooden flooring throughout, and high ceilings creating a refined atmosphere.





## The Kitchen

The kitchen is thoughtfully positioned adjacent to the reception room with fitted units, integrated appliances, and a breakfast bar. Large windows provide pleasant views while sleek countertops and modern fittings complete the space.



## The Bedrooms

The flat comprises four bedrooms arranged along a corridor, with the principal bedroom being particularly spacious and light-filled with an en-suite bathroom. The remaining bedrooms provide flexible accommodation, served by an additional family bathroom with modern fixtures.





## The Neighbourhood

Chiltern Court sits on Baker Street in the heart of Marylebone, representing some of London's finest inter-war residential architecture. The property is moments from Baker Street Underground station with excellent transport links, while Marylebone High Street's independent shops, cafes and restaurants are within easy walking distance. Regent's Park provides nearby green space and recreational facilities.

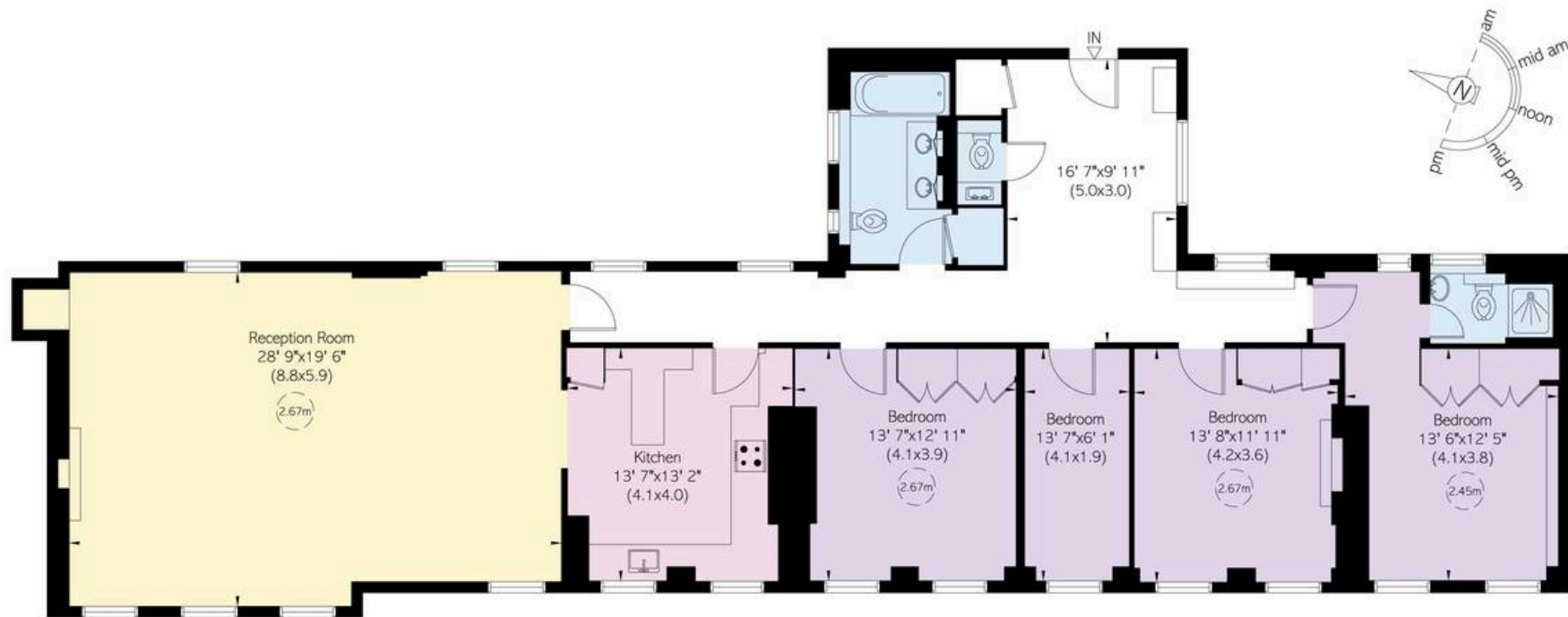


# Chiltern Court, Baker Street, NW1

**RUSSELL  
SIMPSON**

**Approximate Internal Area**  
1,834 sq ft/ 170 sq m

This plan is for layout guidance only. Not drawn to scale unless stated. Windows and door openings are approximate. Whilst every care is taken in the preparation of this plan, please check all dimensions, shapes, and compass bearings before making any decisions reliant upon them.



Fourth Floor



**RUSSELL  
SIMPSON**

---

## Contact Us

+44 (0) 20 3761 9691

[mayfair@russellsimpson.co.uk](mailto:mayfair@russellsimpson.co.uk)

In accordance with the Property Mis-Description Act 1991, the following details have been prepared in good faith, and are not intended to constitute part of an offer or contract. Any information contained herein (whether in the text, plans or photographs) is given in good faith but should not be relied upon as being a statement of representation of fact. Nothing in these Particulars shall be deemed to be a statement that the property is in good condition or otherwise nor that any services or facilities are in good working order. Any measurements of distances referred to herein are approximate only. October 2021