



## **RUSSELL SIMPSON**

Superlative Georgian townhouse and  
mews house to rent with large  
garden, lift and off-street parking

CHEYNE WALK AND CHEYNE MEWS  
CHELSEA SW3

# Cheyne Walk and Cheyne Mews

£25,000 P/W

BEDROOMS 8	INTERNAL 7,680 <small>SQ FT</small>	OUTDOOR 1,770 <small>SQ FT</small>	FURNISHED STATUS Furnished
BATHROOMS 6	713 <small>SQM</small>	EPC C	COUNCIL TAX H

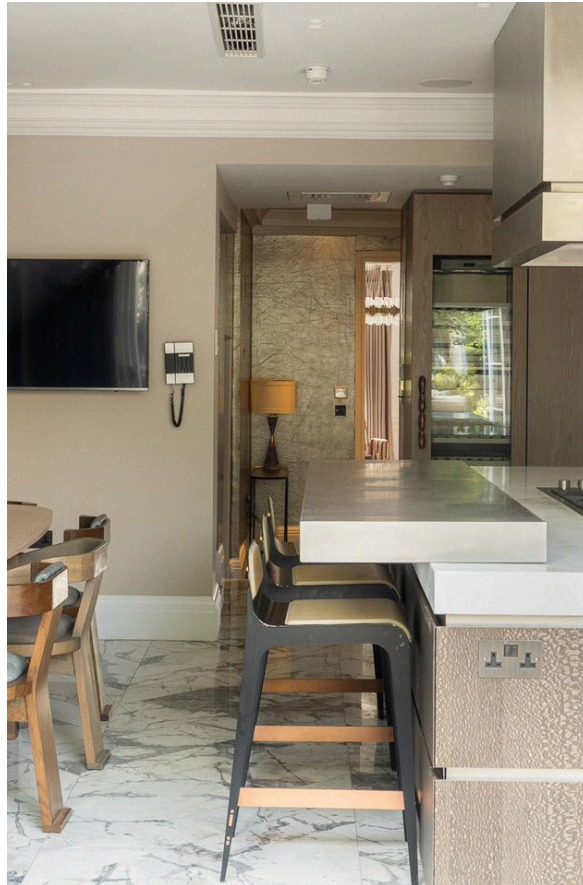


## The Property

Newly refurbished Grade II listed family home with eight bedrooms on Chelsea's most historic street

## Indoor Spaces

Stepping into the house on the ground floor, the entrance hall leads through to a front dining room with high ceilings and a decorative fireplace. Beyond is a kitchen, offering a central island, an informal eating area and bifolding French doors opening onto the garden, filling the space with light.

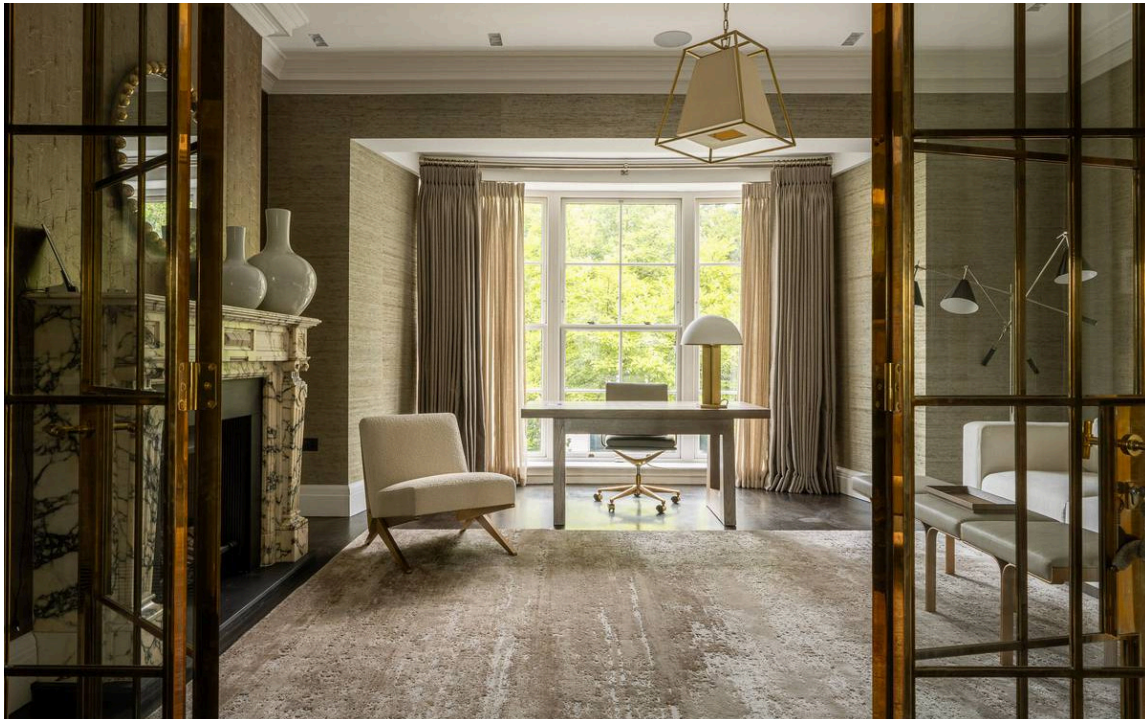






## Reception Room

The first floor is entirely occupied by a magnificent reception room running the entire length of the property. As well as high ceilings and ornate interiors, three full-length south-facing sash windows offer views towards the Thames. The far side of this room can be separated into a private study, with a wide rear window overlooking the garden.

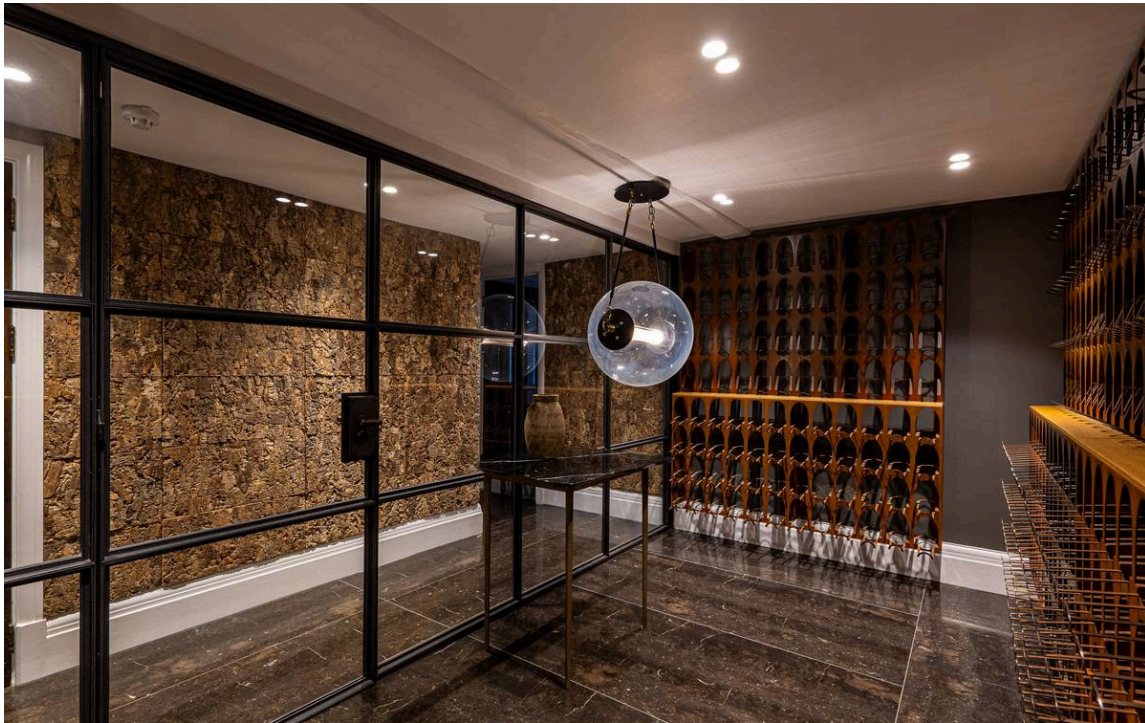




## The Bedrooms

The second floor features a pair of generous bedrooms, both of them ensuite. Meanwhile, the third floor contains a grand principal bedroom suite, with bedroom, dressing room and expansive bathroom, including both shower and bath. The bedroom has also twin French doors opening onto a terrace with spectacular views over the surrounding gardens. The fourth floor offers two more bedrooms, sharing a bathroom, with access to another terrace.





## Amenities

The lower ground floor is made up of a utility room, a kitchenette, a wine cellar, a large family television room, a bedroom with bathroom opposite and considerable storage space.

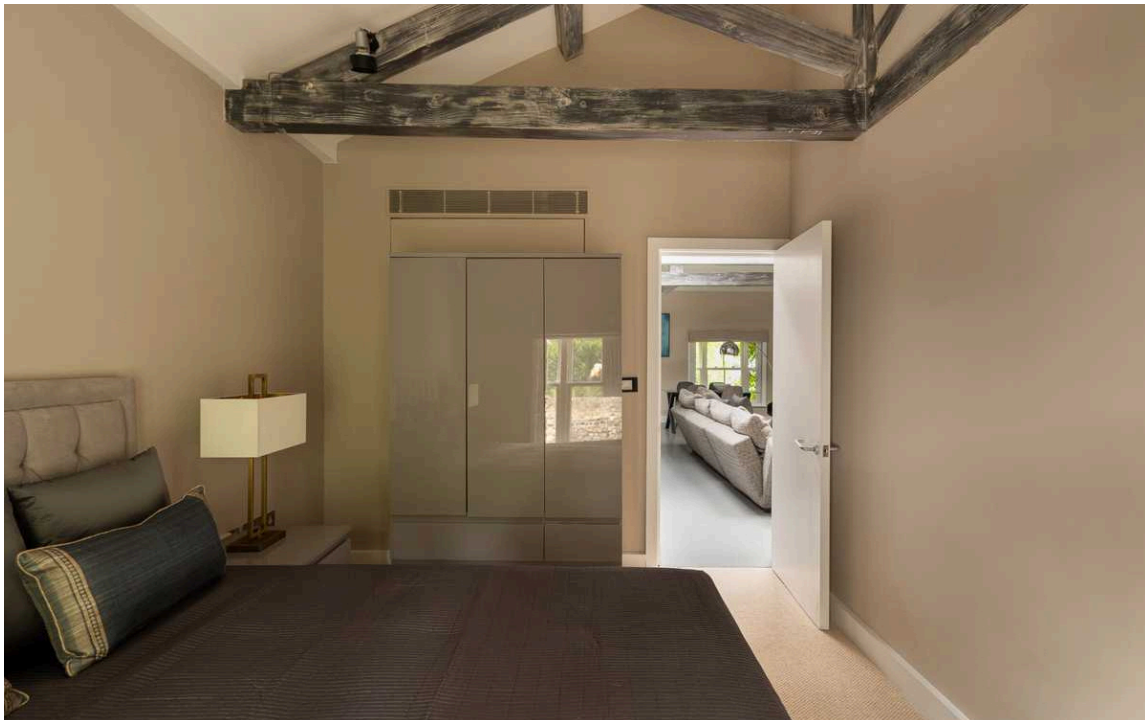






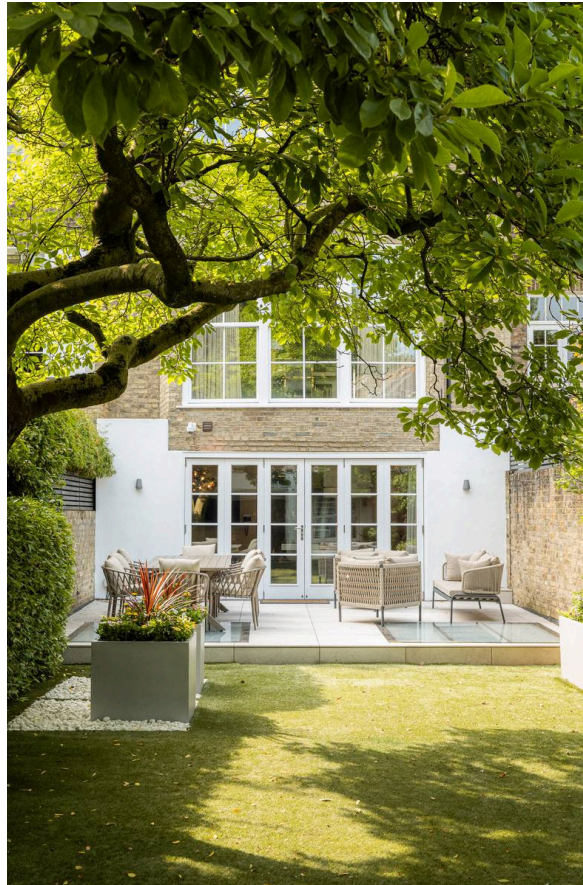
## Mews House

The separate mews house can be accessed via the garden or the lower ground floor. It would serve as the perfect guest flat, with two bedrooms and a bathroom. In addition, the reception room has a high ceiling with a beautiful exposed wooden truss.



## The Design

The house has been completely refurbished and fully furnished. It is decorated in a stylish contemporary fashion and finished to the highest standard. Wooden floors add a sense of sophistication to the living areas, while a convenient lift rises from lower ground to third floor.





## Outdoor Spaces

The house includes an unusually long garden with a paved seating area and a large lawn. Double doors lead out onto Cheyne Mews, giving convenient access for a gardener. Furthermore, the mews house has a garage with space for two cars.

# The Neighbourhood

Cheyne Walk is one of the most historic streets in London. Over the nineteenth and twentieth centuries it was home to numerous celebrated figures, including the writers George Eliot and Bertrand Russell, the painters Dante Gabriel Rossetti and J.M.W. Turner, the actress Elizabeth Taylor and the politician David Lloyd George. Today, the street is conveniently positioned. To the south is the Thames Embankment, with the Albert Bridge leading to Battersea Park. To the north is the King's Road and its excellent range of restaurants and shops. In addition, the beautiful Chelsea Physic Garden is just a short walk away.

Mews House



Cheyne Walk, SW3

RUSSELL SIMPSON

Approximate Internal Area  
7,656 sq ft / 707 sq m  
Including mews house  
and vault  
8,071 sq ft / 751 sq m  
Outside Area  
1,779 sq ft / 164 sq m

This plan is for layout guidance only, not drawn to scale or level above. Windows and door openings are approximate. While every care is taken in the preparation of this plan, dimensions, all dimensions, shapes, and complete bearings before making any decisions related to the same.



**RUSSELL  
SIMPSON**

---

## Contact Us

+44 (0) 20 7225 0277

Contact us

[info@russellsimpson.co.uk](mailto:info@russellsimpson.co.uk)

---

## Sydney Street

+44 (0) 20 7225 0277

151A Sydney Street  
London  
SW3 6NT

[chelsea@russellsimpson.co.uk](mailto:chelsea@russellsimpson.co.uk)

---

## Kensington Square

+44 (0) 20 3761 9691

13 Kensington Square  
London  
W8 5HD

[kensington@russellsimpson.co.uk](mailto:kensington@russellsimpson.co.uk)