



## **RUSSELL SIMPSON**

Two-bedroom Chelsea houseboat  
with bright interiors and south-  
facing terrace to rent

CHEYNE WALK  
CHELSEA SW10

# Cheyne Walk

£1,500 P/W

BEDROOMS 2	INTERNAL 1,965 <small>SQ FT</small>	OUTDOOR 660 <small>SQ FT</small>	FURNISHED STATUS Furnished
BATHROOMS 2	182 <small>SQM</small>	EPC —	COUNCIL TAX RBKC, F



## The Property

Spacious and stylish property on a modern vessel in the historic houseboat village close to the King's Road



## Indoor Spaces

Stepping into the houseboat on the upper deck, you enter a generous living area. This includes a reception room, an open-plan kitchen with modern appliances, and enough space for a dining area. South-facing double French doors open out onto the terrace, while a mix of porthole windows and skylights ensure this room feels bright.

---

img 1

Seating

img 2

Modern Kitchen





## The Bedrooms

Downstairs you will find a pair of bedrooms, both ensuite and both with walk-in wardrobes. In addition, there is a utility room, a guest WC and additional storage space.

---

img 1

Principal Bedroom

img 2

Bathroom



## The Design

The property is decorated in a contemporary style, adding to the sense of light and space. Furthermore, it offers air conditioning throughout.





## Outdoor Spaces & The Neighbourhood

The houseboat includes a spacious south-facing terrace with decking and enough room for outdoor dining. In addition, Cheyne Walk moorings offer a full on-site management team and a night watchman.

Cheyne Walk moorings are close to the King's Road, as well as the neighbourhood's many restaurants and shops. Imperial Wharf and Fulham Broadway stations are both within walking distance, while a riverbus service leaves from Cadogan Pier. Finally, the open spaces of Battersea Park are easily reached on the opposite side of the Thames.



img 1

Terrace

img 2

Boat Entrance

# Zephyr, Chelsea Walk, SW10

**RUSSELL  
SIMPSON**

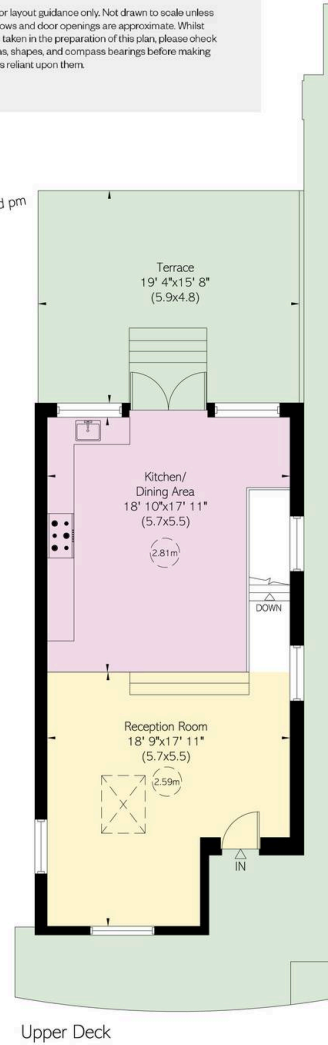
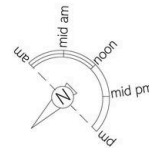
**Approximate Internal Area**  
1,965 sq ft/ 183 sq m

**Including limited use area  
and hold**

177 sq ft/ 16 sq m

**Outside Area**  
661 sq ft/ 61 sq m

This plan is for layout guidance only. Not drawn to scale unless stated. Windows and door openings are approximate. Whilst every care is taken in the preparation of this plan, please check all dimensions, shapes, and compass bearings before making any decisions reliant upon them.





**RUSSELL  
SIMPSON**

---

## Contact Us

+44 (0) 20 7225 0277

Contact us

[info@russellsimpson.co.uk](mailto:info@russellsimpson.co.uk)

---

## Sydney Street

+44 (0) 20 7225 0277

151A Sydney Street  
London  
SW3 6NT

[chelsea@russellsimpson.co.uk](mailto:chelsea@russellsimpson.co.uk)

---

## Kensington Square

+44 (0) 20 3761 9691

13 Kensington Square  
London  
W8 5HD

[kensington@russellsimpson.co.uk](mailto:kensington@russellsimpson.co.uk)