

## **RUSSELL SIMPSON**

Exceptional four-bedroom  
townhouse with private garage and  
rooftop terrace

CHEVAL PLACE  
KNIGHTSBRIDGE SW7

Cheval Place

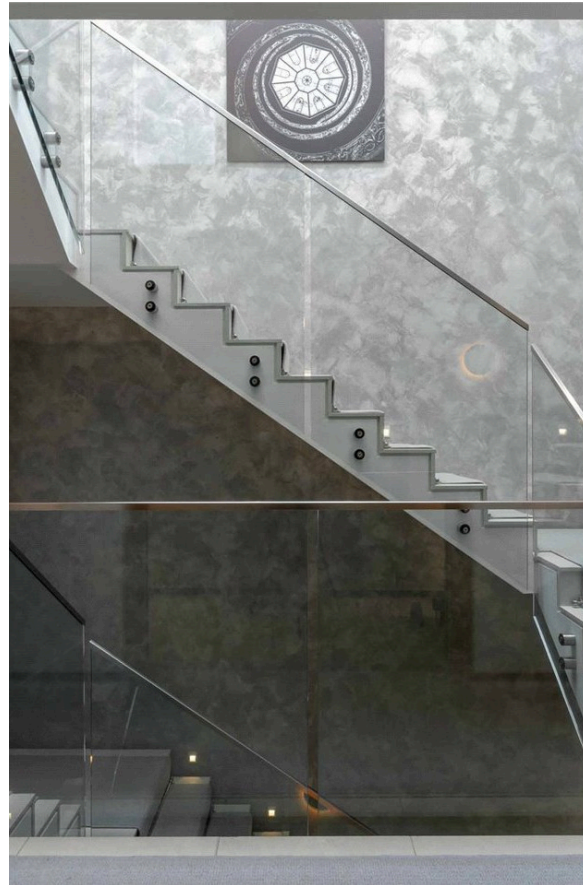
£8,000 <sub>P/W</sub>

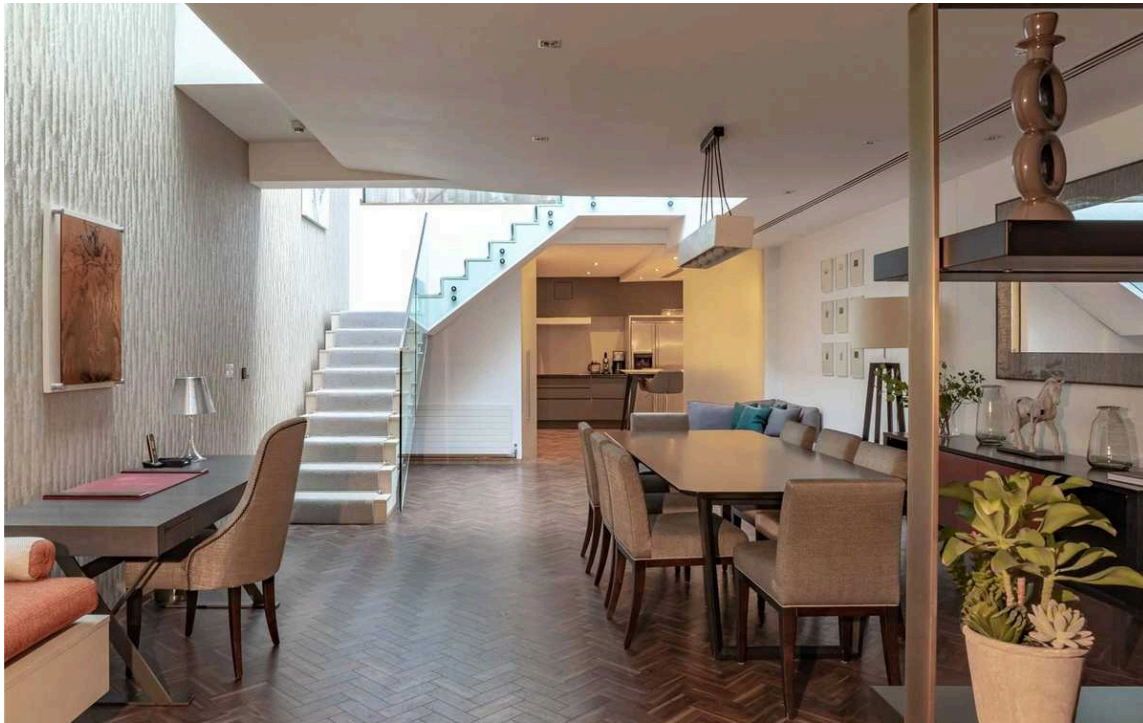
BEDROOMS 4	INTERNAL  3,183 <sub>SQ FT</sub>  295 <sub>SQM</sub>	OUTDOOR  564 <sub>SQ FT</sub>	FURNISHED STATUS  Furnished
BATHROOMS 4		EPC  C	COUNCIL TAX  Westminster City, H

## The Property

A magnificent four-bedroom townhouse offering generous proportions and sophisticated interiors.

A helical staircase with glass railings and carpeted steps connects all floors, adding architectural interest while maintaining the property's contemporary aesthetic.





## Indoor Spaces

Entering the house on the ground floor, you are welcomed into a bright open-plan living and dining area that fills the space with light. The reception room features elegant furnishings with comfortable seating areas. The space flows seamlessly through to a well-appointed dining area. The contemporary kitchen is fitted with sophisticated grey cabinetry and dark countertops, creating a refined aesthetic. Modern appliances include integrated units, while ample storage maximises functionality. A breakfast area provides space for informal dining.







## The Bedrooms

The first floor houses the principal bedroom, beautifully proportioned with elegant furnishings. French doors open onto the private rooftop courtyard, flooding the room with natural light. The principal bedroom benefits from an en-suite bathroom featuring luxurious marble finishes, a freestanding bathtub, double vanity, and glass-enclosed shower. A second generous bedroom on this floor also enjoys en-suite facilities and courtyard access.

The top floor accommodates two additional well-proportioned bedrooms, each with en-suite walk-in showers. High ceilings throughout create a sense of scale and grandeur.





## Outdoor Spaces

The property includes a charming private rooftop courtyard, accessible from the first-floor bedrooms. The courtyard offers a peaceful retreat with views across London's rooftops. The house also benefits from a private garage providing secure parking for one vehicle.

# The Neighbourhood

Cheval Place is a quiet residential address in the heart of Knightsbridge, moments away from the world-renowned shopping of Harrods and Harvey Nichols. The picturesque cobbled street is lined with elegant townhouses, creating an exclusive residential enclave. Hyde Park's open spaces are within easy reach, offering expansive green areas for recreation. The area provides excellent transport links, with Knightsbridge Underground station a short walk away, providing direct access to central London. The neighbourhood is renowned for its upmarket boutiques, fine dining establishments, and cultural attractions, including the artistic treasures of the Victoria and Albert Museum and the Natural History Museum, all within walking distance.

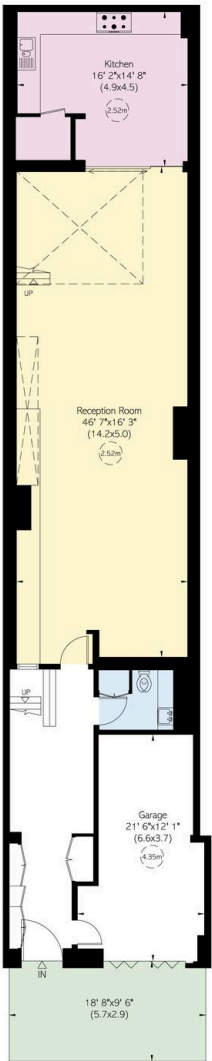
Cheval Place, SW7

RUSSELL  
SIMPSON

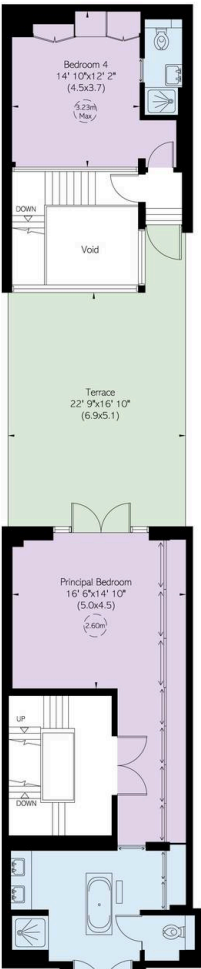
Approximate Internal Area  
3,153 sq ft/ 296 sq m

Outside Area  
564 sq ft/ 52 sq m

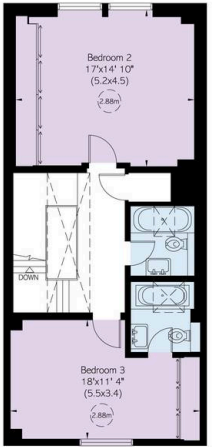
This plan is for layout guidance only. Not drawn to scale unless stated. Windows and door openings are approximate. Whilst every care is taken in the preparation of this plan, please check all dimensions, shapes, and compass bearings before making any decisions reliant upon them.



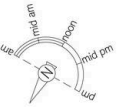
Ground Floor



First Floor



Second Floor





**RUSSELL  
SIMPSON**

---

## Contact Us

+44 (0) 20 7225 0277

151A Sydney Street  
London  
SW3 6NT

[chelsea@russellsimpson.co.uk](mailto:chelsea@russellsimpson.co.uk)

In accordance with the Property Mis-Description Act 1991, the following details have been prepared in good faith, and are not intended to constitute part of an offer or contract. Any information contained herein (whether in the text, plans or photographs) is given in good faith but should not be relied upon as being a statement of representation of fact. Nothing in these Particulars shall be deemed to be a statement that the property is in good condition or otherwise nor that any services or facilities are in good working order. Any measurements of distances referred to herein are approximate only. October 2021