



## **RUSSELL SIMPSON**

Sophisticated flat with spacious  
garden near Ladbroke Grove station  
to rent

CHESTERTON ROAD  
NORTH KENSINGTON W10

# Chesterton Road

Let

BEDROOMS 2	INTERNAL 784 SQ FT	OUTDOOR 458 SQ FT	FURNISHED STATUS Furnished
BATHROOMS 2	72 SQM	EPC C	COUNCIL TAX RBKC, D



## The Property

Two bedroom flat with contemporary interiors on a beautiful street close to Kensington Memorial Park

The interior of the flat is decorated in a contemporary style and presented in good condition. A mix of wooden and paved floors add to the sense of space and light throughout.



## Indoor Spaces

Entering the flat on the lower ground floor, the entrance hall leads through to a generous reception room. As well as an open-plan kitchen, the room has enough space for separate dining and seating areas. French and bifolding doors open out into the garden, while overhead skylights bring in added brightness.

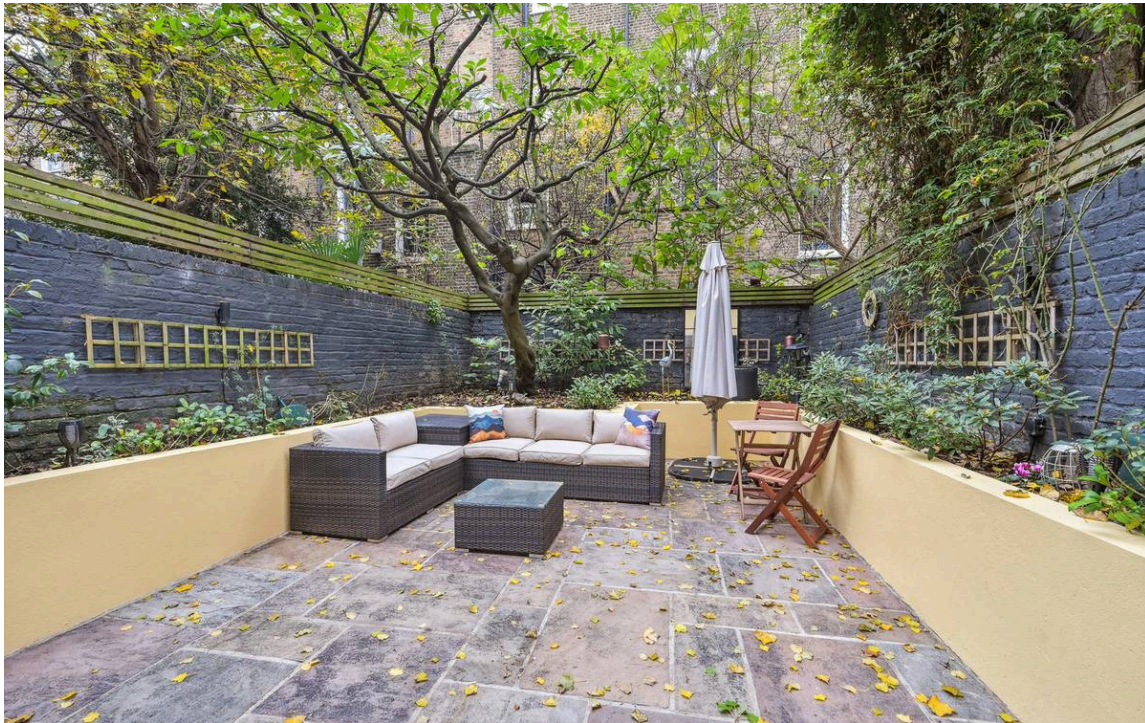




## The Bedrooms

The property also contains a pair of bedrooms. Both are ensuite and both have built-in storage space, while the larger one includes a south-facing bay window.





## The Neighbourhood & Outdoor Spaces

The property offers a generous garden with a seating area and raised flowerbeds.

Chesterton Road is a beautiful street lined in Victorian terrace houses with stucco dressings. The northern end of the Portobello Road is a short walk away, as well as the many shops and restaurants of Golborne Road. In addition, Ladbroke Grove underground station is close, and so too the picturesque towpath of the Grand Union canal.

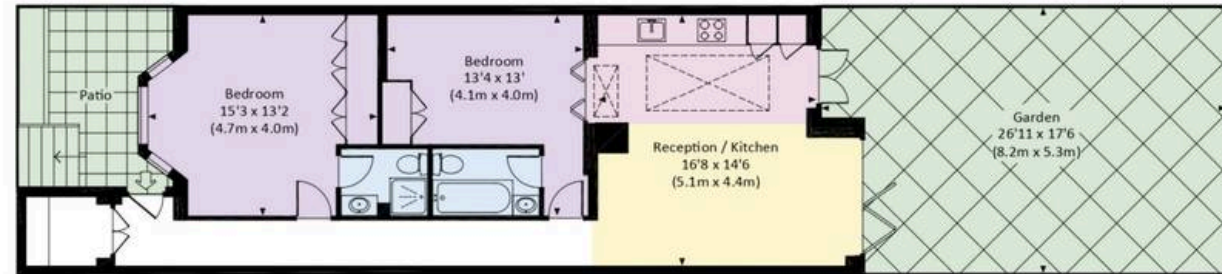


Chesterton Road,  
W10

**Approx Gross Internal Area**  
784 sq ft / 72.8 sq m

**RUSSELL  
SIMPSON**

This plan is for layout guidance only. Not drawn to scale unless stated. Windows and door openings are approximate. Whilst every care is taken in the preparation of this plan. Please check all dimensions, shapes, and compass bearings before making any decisions reliant upon them.



LOWER GROUND FLOOR

**RUSSELL  
SIMPSON**

---

## Contact Us

+44 (0) 20 3761 9691

13 Kensington Square  
London  
W8 5HD

[kensington@russellsimpson.co.uk](mailto:kensington@russellsimpson.co.uk)