

RUSSELL SIMPSON

Tasteful flat to rent moments away
from trendy Golborne Road

CHESTERTON ROAD
NORTH KENSINGTON & QUEENS PARK W10

Chesterton Road

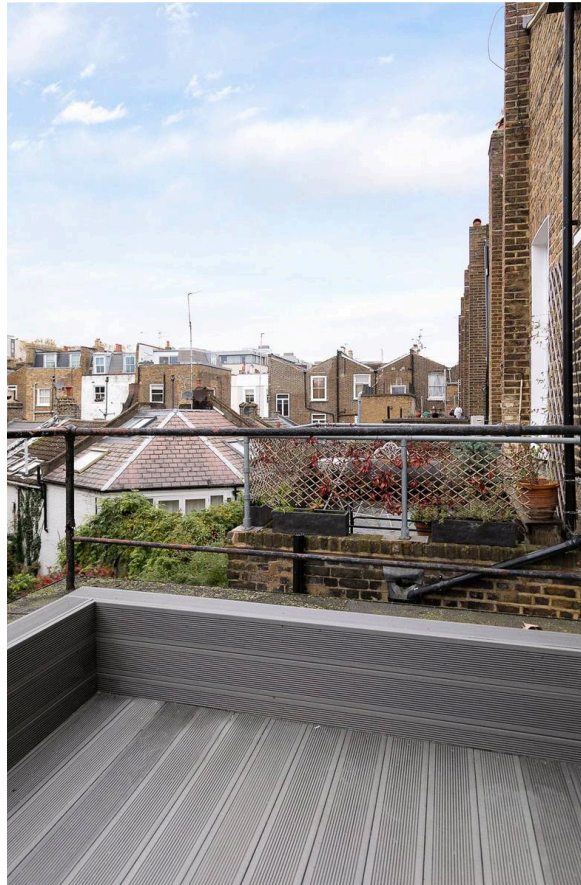
Let

BEDROOMS 1	INTERNAL 510 SQ FT	OUTDOOR 63 SQ FT	FURNISHED STATUS Furnished
BATHROOMS 1	47 SQM	EPC E	COUNCIL TAX RBKC

The Property

One-bedroom flat with terrace in a popular neighbourhood close to Ladbroke Grove station

This second-floor property is centred on a well-proportioned reception room with a south-east facing sash window. On one side is a fitted kitchen, on the other side a bedroom with enough space for a double bed.





Indoor Spaces

The property includes a terrace with wooden decking and enough space for outdoor eating.

The property also contains a bathroom and a utility cupboard. It is decorated in a contemporary style, with bright tiling in the bathroom and bare brick on the stairs leading up from the first-floor entrance. It was recently renovated and presented in good condition.

N.B. A Director of Russell Simpson has an interest in this property.





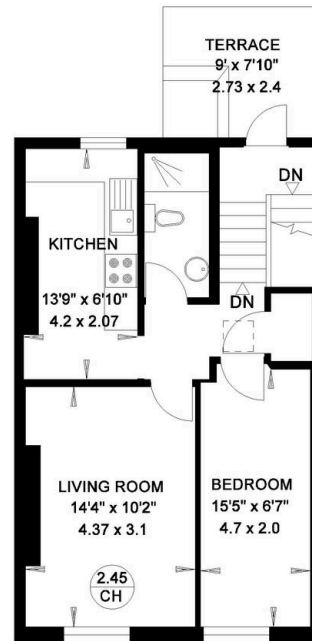
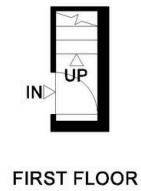
The Neighbourhood

Chesterton Road is a tree-lined street leading towards the intersection of Portobello Road and Golborne Road. This is a popular area with a range of independent restaurants, cafes and shops. From here, Ladbroke Grove underground station is a short walk away, while the Grand Union Canal, with its picturesque towpath for walking and running, is also nearby



SECOND FLOOR FLAT
CHESTERTON ROAD
LONDON W10

Gross Internal Area = 47 sq. metres
510 sq. feet



SECOND FLOOR

**RUSSELL
SIMPSON**

Contact Us

+44 (0) 20 7225 0277

Contact us

info@russellsimpson.co.uk

Sydney Street

+44 (0) 20 7225 0277

151A Sydney Street

London

SW3 6NT

chelsea@russellsimpson.co.uk

Kensington Square

+44 (0) 20 3761 9691

13 Kensington Square

London

W8 5HD

kensington@russellsimpson.co.uk