



RUSSELL SIMPSON

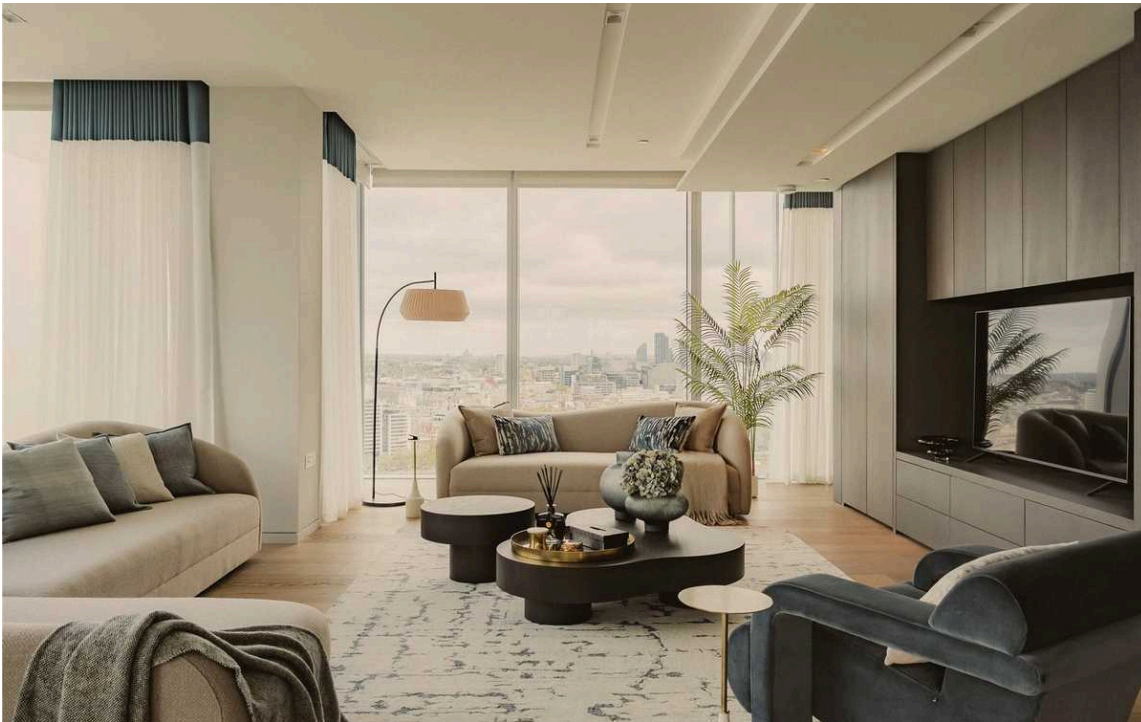
Exceptional penthouse apartment
with city views and spacious
entertaining areas

CASSON SQUARE
LAMBETH SE1

Casson Square

£10,500 P/W

<div>BEDROOMS</div> <div>5</div>	<div>INTERNAL</div> <div>7,501 <small>SQ FT</small></div> <div>696 <small>SQM</small></div>	<div>OUTDOOR</div> <div>—</div>	<div>FURNISHED STATUS</div> <div>Furnished</div>
<div>BATHROOMS</div> <div>5</div>		<div>EPC</div> <div>—</div>	<div>COUNCIL TAX</div> <div>—</div>



The Property

Entering the apartment on the twenty-eighth floor, you are welcomed by an impressive entrance hall that loops around the entire apartment. On this floor is a spacious reception room that has floor-to-ceiling windows that span nearly 80 feet, offering breathtaking panoramic views across the Thames, including the London Eye.

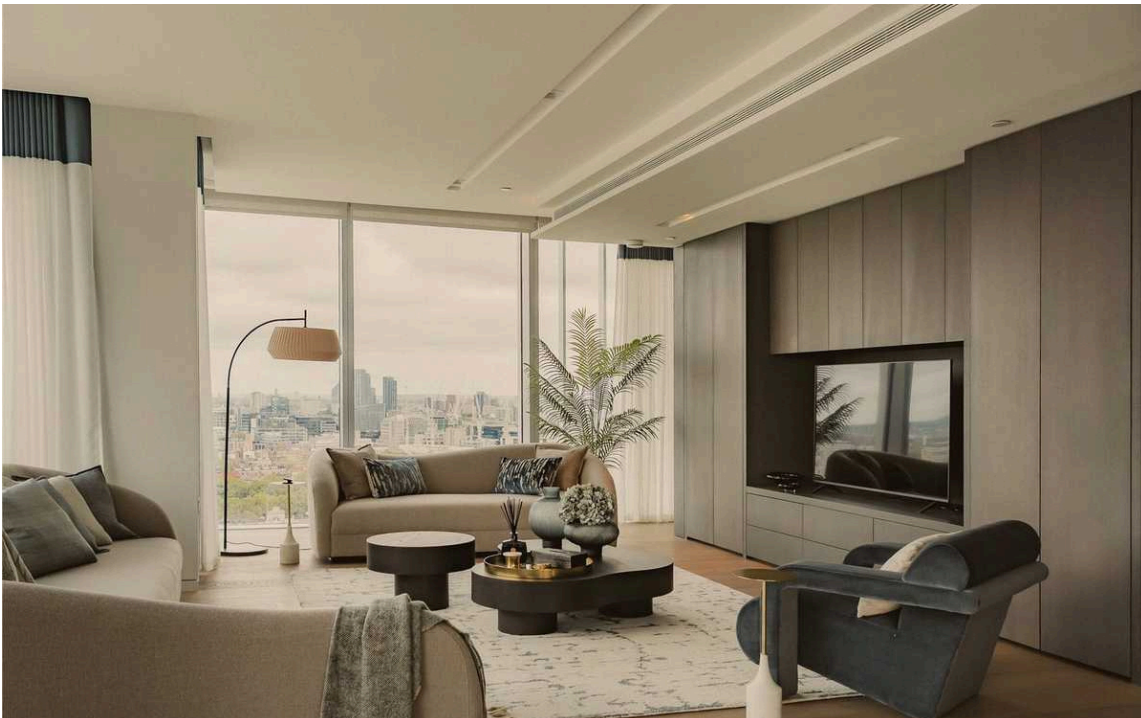
The space flows seamlessly into a contemporary kitchen with marble countertops, integrated appliances and river views. A handy utility room leads off the kitchen.

This floor accommodates four well-proportioned bedrooms with built-in storage and ensuite bathrooms, and a separate study space.

A sophisticated staircase leads to the twenty-ninth floor, where the principal bedroom suite provides substantial proportions with an ensuite bathroom and his and hers dressing rooms, all benefiting from terrace access and spectacular city views and private outdoor space.

The apartment is presented in superb condition throughout, decorated in a refined contemporary style with wooden floors, marble finishes and floor-to-ceiling windows maximising the extraordinary views. High ceilings create a sense of scale throughout both levels.

Two private terraces on the twenty-ninth floor provide exceptional outdoor space with panoramic views across London's skyline and the Thames, offering substantial areas for outdoor dining and entertaining.



img 1

Picture No. 03

img 2

Picture No. 04

The Neighbourhood

Casson Square is a prestigious riverside development on the South Bank, moments away from the cultural attractions of the Tate Modern and Shakespeare's Globe. The location offers excellent access to Borough Market and the restaurants of Bankside, with Southwark and London Bridge stations providing superb transport connections across the capital.

Casson Square, SE1

Approximate Internal Area

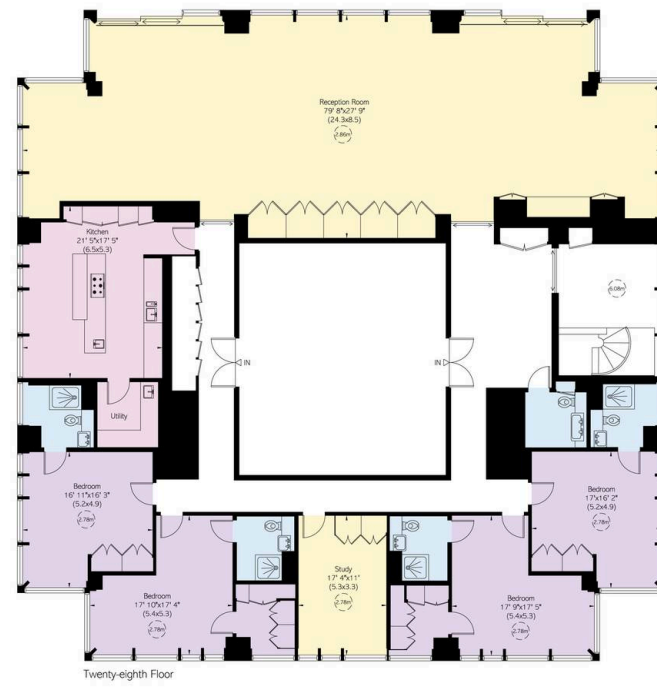
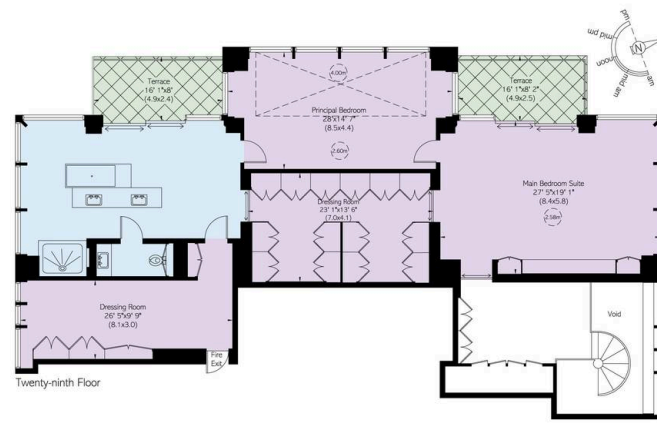
7,304 sq ft / 677 sq m

Outside Area

254 sq ft / 24 sq m

**RUSSELL
SIMPSON**

This plan is for layout guidance only, not drawn to scale unless stated. Windows and door openings are approximate. All the above areas are taken to the preparation of this plan, please check all dimensions, shapes, and compass bearings before making any decisions about your plans.



**RUSSELL
SIMPSON**

Contact Us

+44 (0) 20 7225 0277

151A Sydney Street
London
SW3 6NT

chelsea@russellsimpson.co.uk

In accordance with the Property Mis-Description Act 1991, the following details have been prepared in good faith, and are not intended to constitute part of an offer or contract. Any information contained herein (whether in the text, plans or photographs) is given in good faith but should not be relied upon as being a statement of representation of fact. Nothing in these Particulars shall be deemed to be a statement that the property is in good condition or otherwise nor that any services or facilities are in good working order. Any measurements of distances referred to herein are approximate only. October 2021