



## **RUSSELL SIMPSON**

Elegant four-bedroom townhouse  
with roof terrace in Kensington

CAMPDEN STREET  
KENSINGTON W8

Campden Street

Let

BEDROOMS 4	INTERNAL 1,619 SQ FT	OUTDOOR 219 SQ FT	FURNISHED STATUS Unfurnished
BATHROOMS 2	150 SQM	EPC C	COUNCIL TAX RBKC, G

# The Property

A beautifully presented three-storey townhouse, with a roof terrace, in excellent condition.





## Indoor Spaces

Entering the house on the ground floor, you step into a generous reception room with lofty proportions and elegant period features, including moulded cornices. The room is filled with light from full-length windows and features wooden floors throughout this level. The formal dining room flows off the reception area, creating an impressive entertaining space enhanced by a spectacular glass roof skylight that floods the room with natural light.



## The Kitchen

The kitchen features distinctive hexagonal terracotta and beige tiled flooring that adds warmth to the space. Fitted with light-coloured units and brass handles, the kitchen includes a white farmhouse sink with a brass faucet. The space is complemented by brass wall-mounted lighting and offers practical storage with a central preparation area.



## The Bedrooms

Ascending to the first floor, three well-proportioned bedrooms benefit from large windows and storage space. The bedrooms share a family bathroom located between them on this level.

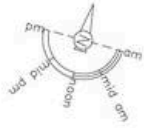
The second floor houses the principal bedroom with sloped ceilings under the eaves, offering generous proportions and wardrobe space. This level also features a bathroom and provides access to the terrace.



## The Neighbourhood

The property includes a terrace on the second floor, offering an elevated outdoor space with surrounding rooftop views. The terrace provides enough space for outdoor seating and creates a peaceful retreat above the street level.

Campden Street is a quiet residential address in the heart of Kensington, moments away from the open spaces of Holland Park and the upmarket boutiques of Kensington High Street. The location offers excellent transport links with High Street Kensington station within easy reach, providing access to the Circle, District and Piccadilly lines. The area is renowned for its sophisticated white stucco townhouses and tree-lined streets, with many restaurants and cultural attractions nearby including the artistic treasures of the Victoria and Albert Museum and Natural History Museum, all within a short walk of this attractive Kensington address.



# Campden Street, W8

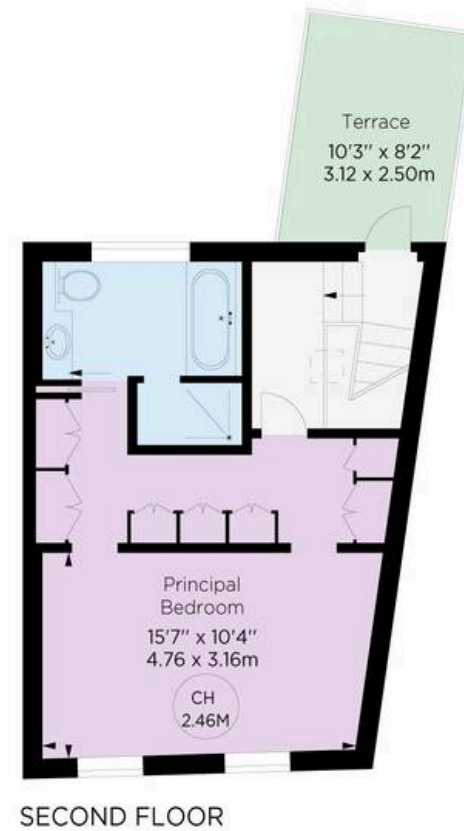
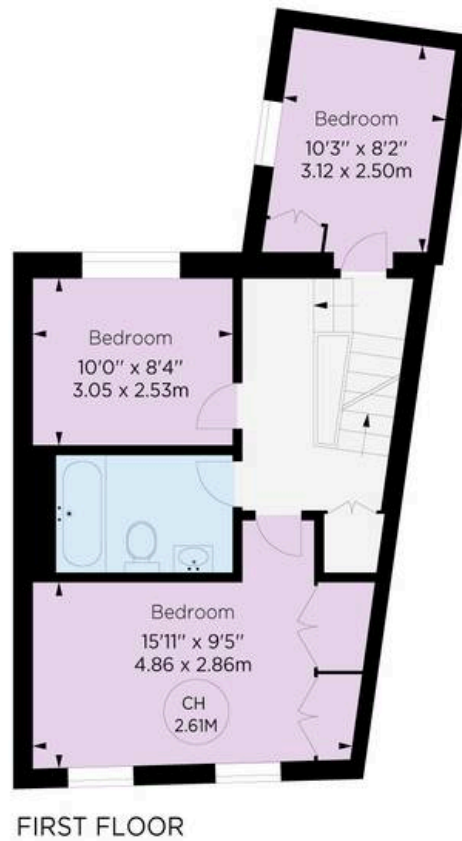
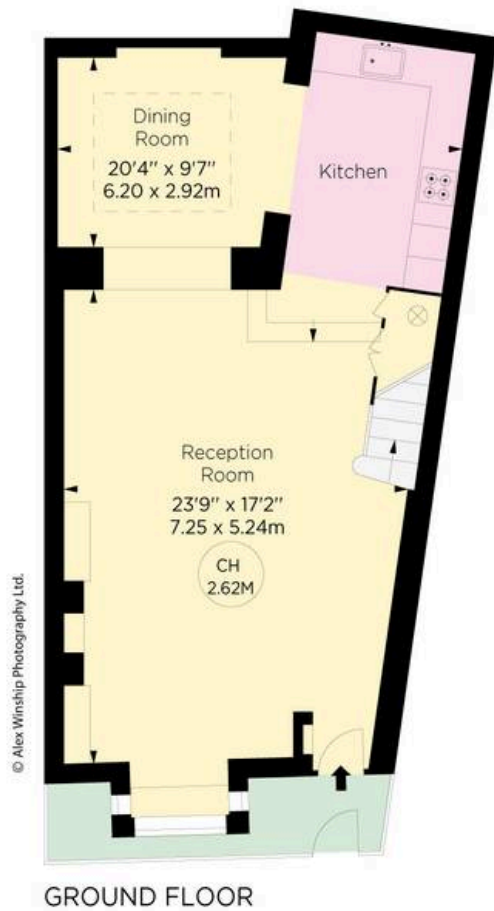
**RUSSELL SIMPSON**

**Approx. gross internal area**  
1619 sq ft / 150.41 sq m

**Approx. outdoor area**  
129 sq ft / 12 sq m

This plan is for layout guidance only. Not drawn to scale unless stated. Windows and door openings are approximate. Whilst every care is taken in the preparation of this plan, please check all dimensions, shapes, and compass bearings before making any decisions reliant upon them.

Key :  
CH - Ceiling Height



\*Floorplan for guidance only, not to scale or situations purposes. It must not be relied upon as a statement of fact. All measurements and areas are approximate and have been prepared in accordance with the current edition of the RICS Code of Measuring Practice.



**RUSSELL  
SIMPSON**

---

## Contact Us

+44 (0) 20 3761 9691

13 Kensington Square  
London  
W8 5HD

[kensington@russellsimpson.co.uk](mailto:kensington@russellsimpson.co.uk)