



RUSSELL SIMPSON

Beautifully decorated five bedroom
house with garden and roof terrace
to rent in Chelsea

BURNABY STREET
CHELSEA SW10

Burnaby Street

Let

| | | | |
|----------------|-------------------------|----------------------|-------------------------------|
| BEDROOMS 5 | INTERNAL 2,041 SQ FT | OUTDOOR 513 SQ FT | FURNISHED STATUS Furnished |
| BATHROOMS 3 | 189 SQM | EPC B | COUNCIL TAX RBKC, G |



The Property

Bright and spacious family home perfectly positioned between the River Thames and the King's Road



img 2

Dining Area



Indoor Spaces

Entering the house on the ground floor, the front hall leads into a generous reception room with enough space for separate dining and seating areas. Beyond is a fitted corridor kitchen with French doors leading out into the garden. High ceilings and a double aspect give the room a bright and spacious feel.

img 1

Kitchen





The Bedrooms

The first floor features a pair of bedrooms, one of which can be used as a dressing room. Furthermore, the half-landing contains a bathroom and a guest WC. The second floor is entirely occupied by the principal bedroom, with an ensuite bathroom and double French doors opening the roof terrace.

The lower ground floor contains a bedroom, a bathroom, and a utility room. In addition, there is a second bedroom or home study with access to a rear patio. There is also separate street access and outdoor storage via the front patio.

img 1

Principal Bedroom

img 2

Double Bedroom





Outdoor Spaces

The house includes a paved rear garden with enough space to entertain outdoors. In addition, there is a south-east facing roof terrace with garden views and room for seating.

img 1

Garden

img 2

Balcony Views





The Neighbourhood

Burnaby Street is a quiet residential road in Chelsea. From here, the Thames waterfront and Chelsea Creek is close. In addition, Westfield Park and the King's Road are also nearby. Finally, Imperial Wharf and Fulham Broadway stations are both within walking distance.

Burnaby Street, SW10

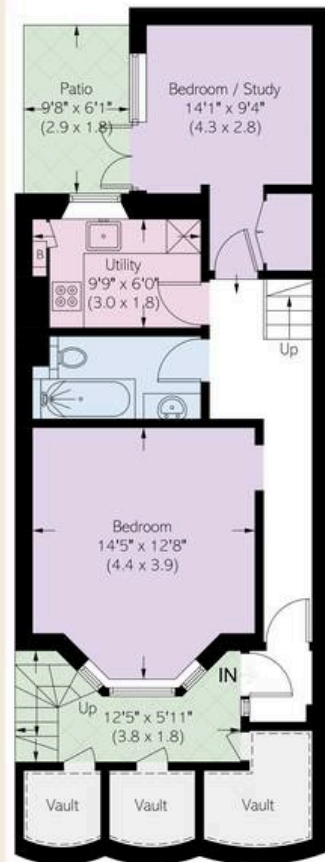
Approximate area
189.6 sq m / 2041 sq ft

Including limited use area
(24.2 sq m / 260 sq ft) Eaves and Vaults

Approximate external area
47.7 sq m / 513 sq ft

RUSSELL SIMPSON

This plan is for layout guidance only. Not drawn to scale unless stated. Windows and door openings are approximate. Whilst every care is taken in the preparation of this plan, please check all dimensions, shapes, and compass bearings before making any decisions reliant upon them.



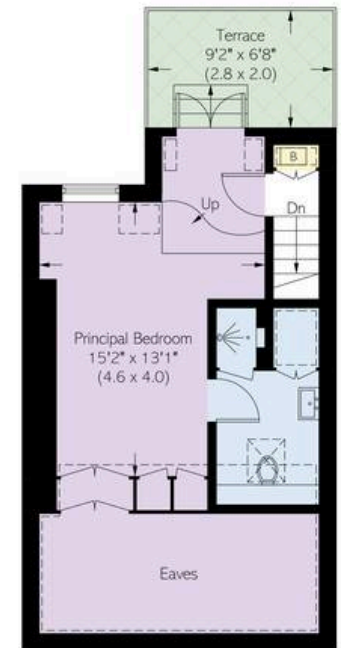
Lower Ground Floor



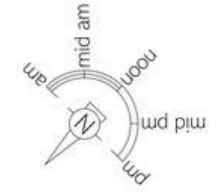
Raised Ground Floor



First Floor



Second Floor



☐ = Reduced head height below 1.5m

**RUSSELL
SIMPSON**

Contact Us

+44 (0) 20 7225 0277

Contact us

info@russellsimpson.co.uk

Sydney Street

+44 (0) 20 7225 0277

151A Sydney Street
London
SW3 6NT

chelsea@russellsimpson.co.uk

Kensington Square

+44 (0) 20 3761 9691

13 Kensington Square
London
W8 5HD

kensington@russellsimpson.co.uk