



RUSSELL SIMPSON

Sophisticated three-bedroom
apartment in a prestigious Mayfair
development

BURLINGTON GATE
MAYFAIR W1S

Burlington Gate

£4,850 _{P/W}

BEDROOMS 3	INTERNAL 1,800 _{SQ FT} 167 _{SQM}	OUTDOOR —	FURNISHED STATUS Furnished
BATHROOMS 3		EPC B	COUNCIL TAX Westminster City, H

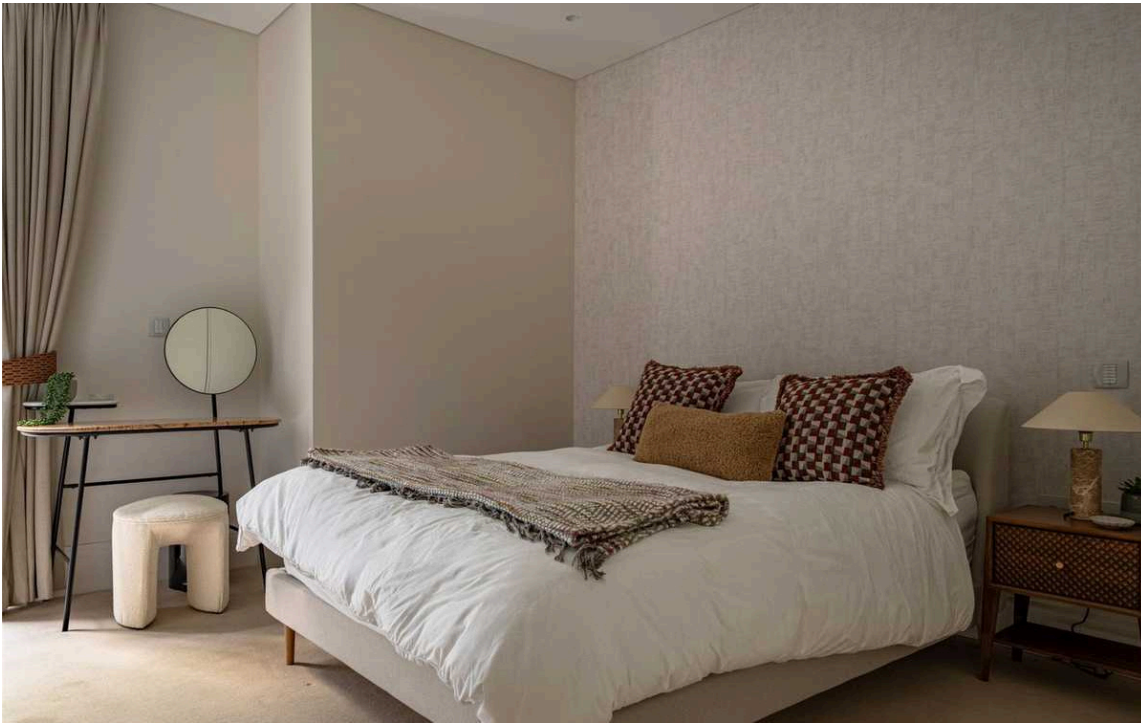
The Property

Contemporary third-floor apartment with lift access and luxury finishes.

Entering the apartment, the generous open-plan reception room creates an impressive sense of scale with its 29-foot length and floor-to-ceiling proportions. The space seamlessly integrates kitchen, dining and living areas, with sleek dark wood cabinetry and contemporary fittings throughout. The kitchen features integrated appliances and a stylish breakfast bar, while the dining area provides elegant space for entertaining with sophisticated lighting.

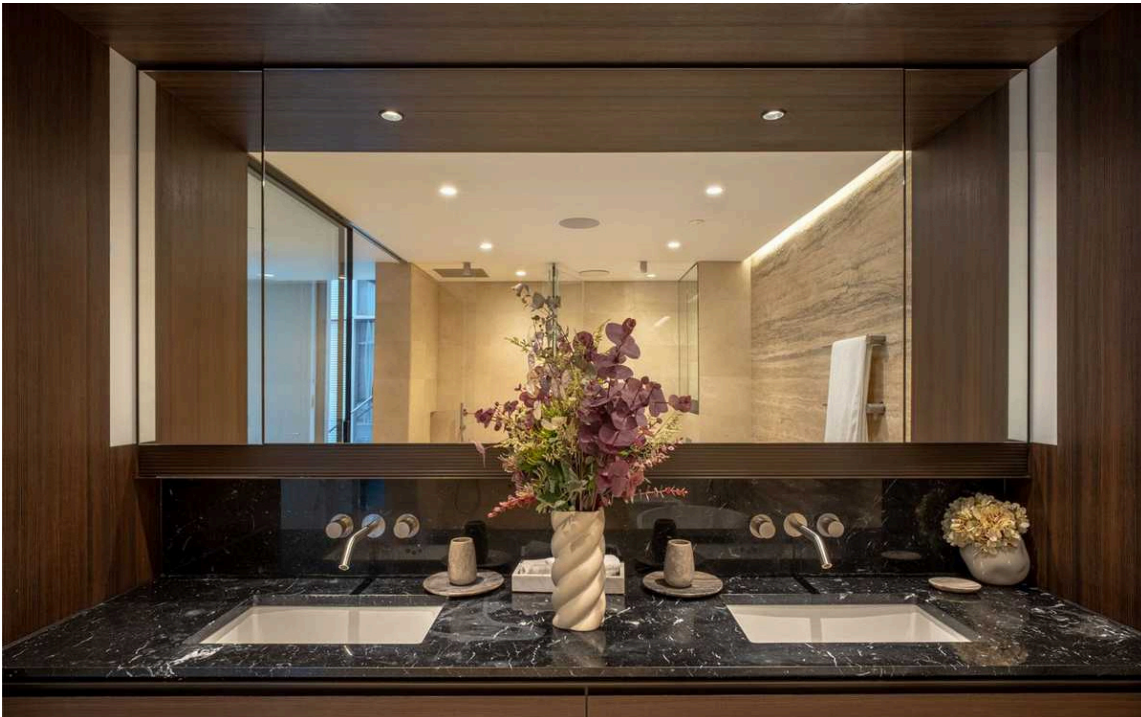
Contemporary design elements include textured wall treatments, carefully curated lighting, and a refined neutral palette enhanced by warm wood tones and metallic accents.

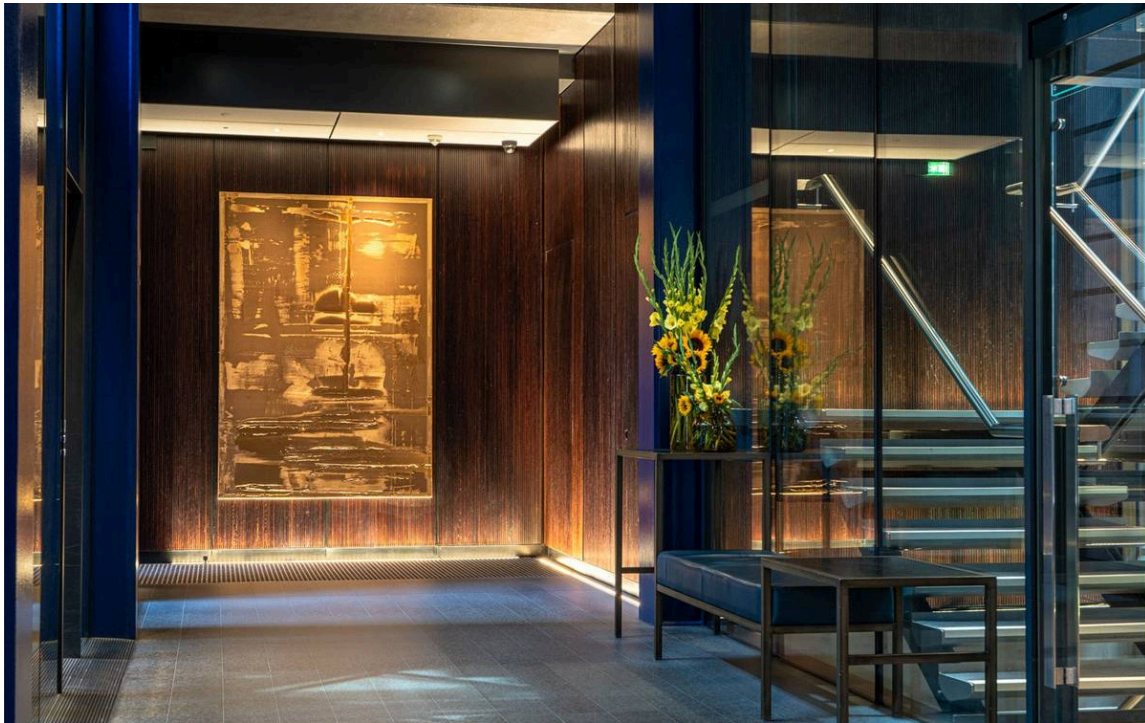




The Bedrooms

The principal bedroom suite offers substantial proportions with fitted storage and benefits from a walk-in dressing room and luxurious en-suite bathroom featuring twin sinks, a freestanding bath, and natural stone finishes. Two additional well-proportioned bedrooms provide flexible accommodation, both served by beautifully appointed bathrooms with modern fixtures and warm stone detailing. Built-in storage solutions maximise space throughout, while a discreet utility room adds practical convenience.



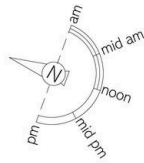


The Neighbourhood

Parking can be arranged by separate negotiation.

Cork Street sits in the heart of Mayfair, moments away from Bond Street's upmarket boutiques and the open spaces of Hyde Park. The prestigious Burlington Gate development offers 24-hour concierge service and is within easy reach of Green Park and Bond Street stations, providing excellent transport connections across London. The area is renowned for its art galleries, fine dining establishments, and proximity to the cultural attractions of the West End.





Burlington Gate, Cork Street, W1

1,600 sq ft/ 149 sq m

**RUSSELL
SIMPSON**

This plan is for layout guidance only. Not drawn to scale unless stated. Windows and door openings are approximate. Whilst every care is taken in the preparation of this plan, please check all dimensions, shapes, and compass bearings before making any decisions reliant upon them.



**RUSSELL
SIMPSON**

Contact Us

+44 (0) 203 815 9144

mayfair@russellsimpson.co.uk

In accordance with the Property Mis-Description Act 1991, the following details have been prepared in good faith, and are not intended to constitute part of an offer or contract. Any information contained herein (whether in the text, plans or photographs) is given in good faith but should not be relied upon as being a statement of representation of fact. Nothing in these Particulars shall be deemed to be a statement that the property is in good condition or otherwise nor that any services or facilities are in good working order. Any measurements of distances referred to herein are approximate only. October 2021