



## **RUSSELL SIMPSON**

Charming two-bedroom flat with lift  
access in Mayfair

BLOOMFIELD COURT  
MAYFAIR W1K

Bloomfield Court

£4,995 P/M

<div>BEDROOMS</div> <div>2</div>	<div>INTERNAL</div> <div>931 <small>SQ FT</small></div> <div>86 <small>SQM</small></div>	<div>OUTDOOR</div> <div>—</div>	<div>FURNISHED STATUS</div> <div>Furnished</div>
<div>BATHROOMS</div> <div>2</div>		<div>EPC</div> <div>B</div>	<div>COUNCIL TAX</div> <div>Westminster City</div>

# The Property

A well-presented second-floor flat in an elegant red brick building.

Entering the flat, a wrap-around corridor leads to all accommodation. The bright open-plan reception and dining room features large windows overlooking the courtyard, wooden floors throughout and benefits from excellent natural light.

The separate kitchen is fitted with white units, stone countertops and integrated appliances arranged in a practical U-shaped layout.



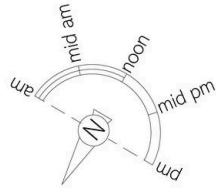
## The Bedrooms

The accommodation includes two bedrooms, both with built-in storage. The principal bedroom features an en-suite bathroom, while the second bedroom is served by a separate bathroom with a bath. The flat is presented in very good condition with contemporary fixtures throughout.



# The Neighbourhood

Bloomfield Court is situated in a quiet residential setting within Mayfair. The building benefits from lift access and the location offers easy access to the shops and restaurants of Oxford Street, with Bond Street and Marble Arch stations moments away. The area combines the convenience of central London living with the charm of a peaceful residential address.

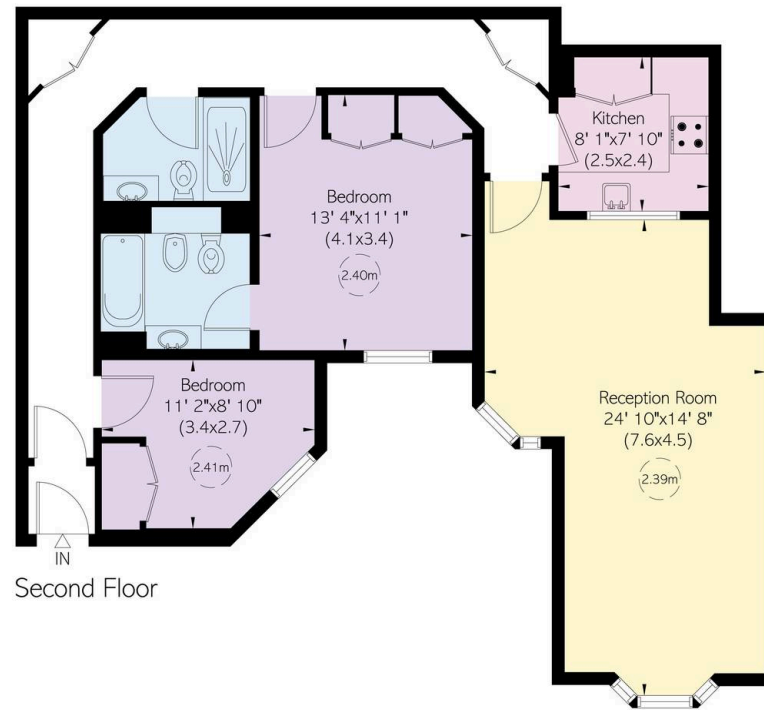


## Bloomfield Court, Boudon Street, W1

**RUSSELL  
SIMPSON**

**Approximate Internal Area**  
931 sq ft/ 86 sq m

This plan is for layout guidance only. Not drawn to scale unless stated. Windows and door openings are approximate. Whilst every care is taken in the preparation of this plan, please check all dimensions, shapes, and compass bearings before making any decisions reliant upon them.



**RUSSELL  
SIMPSON**

---

## Contact Us

+44 (0) 20 3761 9691

[mayfair@russellsimpson.co.uk](mailto:mayfair@russellsimpson.co.uk)

In accordance with the Property Mis-Description Act 1991, the following details have been prepared in good faith, and are not intended to constitute part of an offer or contract. Any information contained herein (whether in the text, plans or photographs) is given in good faith but should not be relied upon as being a statement of representation of fact. Nothing in these Particulars shall be deemed to be a statement that the property is in good condition or otherwise nor that any services or facilities are in good working order. Any measurements of distances referred to herein are approximate only. October 2021