

RUSSELL SIMPSON

Elegant two-bedroom apartment
with lift access in prestigious
Mayfair location

BLOOMFIELD COURT
MAYFAIR W1K

Bloomfield Court

£1,385 _{P/W}

BEDROOMS 2	INTERNAL 940 _{SQ FT} 87 _{SQM}	OUTDOOR —	FURNISHED STATUS Furnished
BATHROOMS 2		EPC B	COUNCIL TAX Westminster City, G



The Property

A beautifully presented third-floor apartment accessed by lift.

Entering the flat on the third floor, you step into a wrap-around corridor that provides access to all accommodation. The entrance area leads first to two well-proportioned bedrooms, both benefiting from built-in storage solutions. The principal bedroom features an ensuite bathroom. A separate shower room with double sinks serves the accommodation.



Indoor Spaces

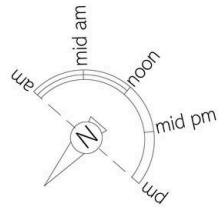


Following the corridor around to the other side of the apartment, you discover the impressive reception room with generous proportions measuring over 25 feet in length. This elegant space features large bay windows that fill the room with natural light and offer views across the surrounding area. The reception room benefits from built-in shelving and refined architectural details, with high ceilings that create a superb sense of scale. The separate kitchen is well-appointed and thoughtfully positioned, maintaining the apartment's sophisticated flow while providing practical cooking facilities.



The Neighbourhood

Bourdon Street is a quiet residential address in the heart of Mayfair, moments away from the open spaces of Hyde Park and within easy reach of the upmarket boutiques and restaurants of Bond Street. The location offers excellent transport links and access to many of London's finest cultural attractions.

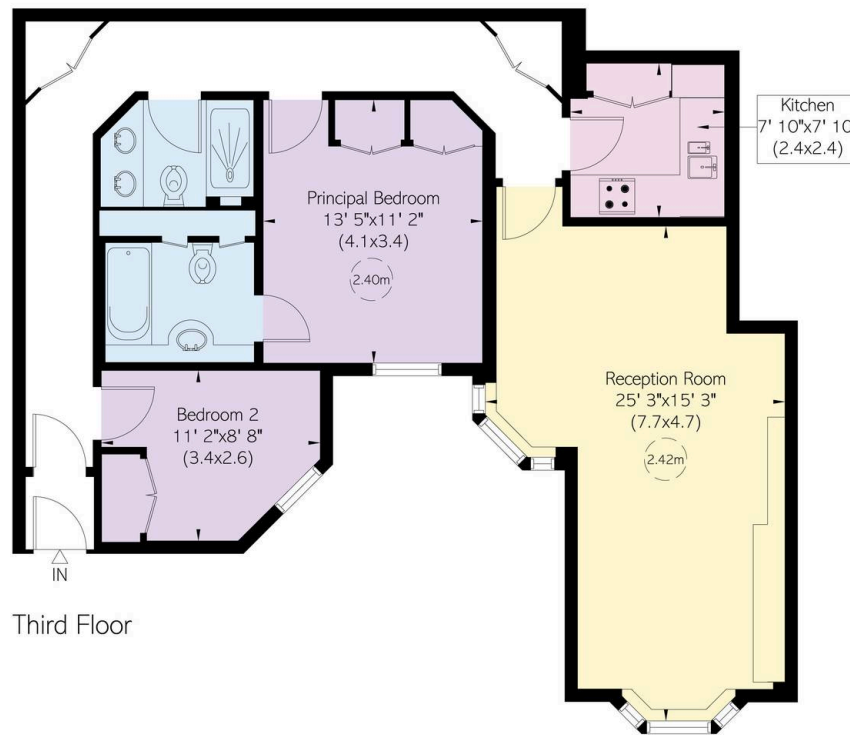


Bloomfield Court, Boudon Street, W1

**RUSSELL
SIMPSON**

Approximate Internal Area
940 sq ft/ 87 sq m

This plan is for layout guidance only. Not drawn to scale unless stated. Windows and door openings are approximate. Whilst every care is taken in the preparation of this plan, please check all dimensions, shapes, and compass bearings before making any decisions reliant upon them.



Third Floor

**RUSSELL
SIMPSON**

Contact Us

+44 (0) 20 3761 9691

mayfair@russellsimpson.co.uk

In accordance with the Property Mis-Description Act 1991, the following details have been prepared in good faith, and are not intended to constitute part of an offer or contract. Any information contained herein (whether in the text, plans or photographs) is given in good faith but should not be relied upon as being a statement of representation of fact. Nothing in these Particulars shall be deemed to be a statement that the property is in good condition or otherwise nor that any services or facilities are in good working order. Any measurements of distances referred to herein are approximate only. October 2021