



## **RUSSELL SIMPSON**

Sophisticated two-bedroom flat in  
the heart of prestigious Chelsea

BEAUFORT GARDENS  
CHELSEA SW3

Beaufort Gardens

£1,385 <sub>P/W</sub>

|                |   |                                     |                                   |
|----------------|---|-------------------------------------|-----------------------------------|
| BEDROOMS<br>2  | INTERNAL<br><br>1,007 <sub>SQ FT</sub><br><br>93 <sub>SQM</sub> | OUTDOOR<br><br>157 <sub>SQ FT</sub> | FURNISHED STATUS<br><br>Furnished |
| BATHROOMS<br>2 |   | EPC<br><br>D                        | COUNCIL TAX<br><br>RBKC, E        |



## The Property

A beautifully presented two-bedroom flat.

Entering the flat on the raised ground floor, you step into a dining area featuring contemporary built-in cabinetry and refined finishes. The space flows seamlessly into a sleek galley kitchen, fitted with modern units and benefiting from natural light through a large window overlooking the brick architecture beyond.

Adjacent to the dining area lies the reception room, decorated in a graceful contemporary style with high ceilings that create a delightful sense of scale. Full-length windows enhance light-filled interiors, while the room is elegantly furnished with a classic fireplace and tasteful period details. French doors open directly onto the terrace.





## The Bedrooms

The lower ground floor houses the principal bedroom, a well-proportioned double room with ensuite bathroom facilities. The second bedroom, equally well-appointed, enjoys direct access to a patio area



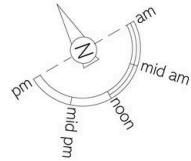




## The Neighbourhood

The property includes two outdoor areas: a south-facing terrace accessible from the reception room and an small patio off the second bedroom.

Beaufort Gardens is a quiet residential address in the heart of Chelsea, moments away from the upmarket boutiques and many restaurants of the King's Road. The tree-lined street features elegant Victorian architecture and is within easy reach of the open spaces of Hyde Park and the cultural attractions of South Kensington.



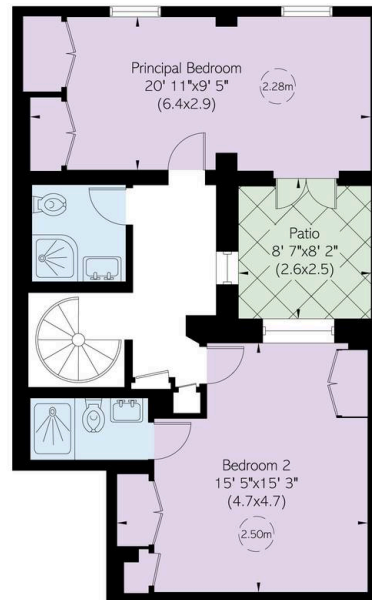
## Beaufort Gardens, SW<sub>3</sub>

**RUSSELL  
SIMPSON**

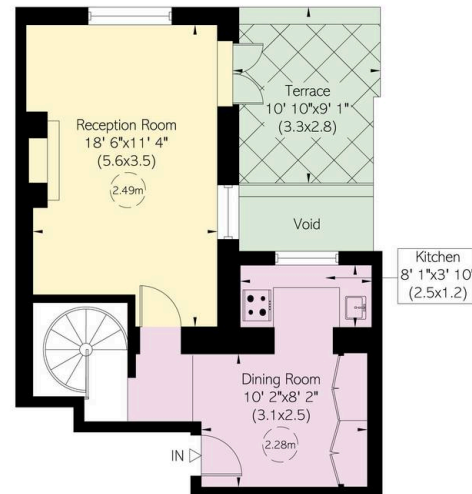
**Approximate Internal Area**  
1,004 sq ft/ 93 sq m

**Outside Area**  
158 sq ft/ 15 sq m

This plan is for layout guidance only. Not drawn to scale unless stated. Windows and door openings are approximate. Whilst every care is taken in the preparation of this plan, please check all dimensions, shapes, and compass bearings before making any decisions reliant upon them.



Lower Ground Floor



Raised Ground Floor

**RUSSELL  
SIMPSON**

---

## Contact Us

+44 (0) 20 7225 0277

151A Sydney Street  
London  
SW3 6NT

[chelsea@russellsimpson.co.uk](mailto:chelsea@russellsimpson.co.uk)

In accordance with the Property Mis-Description Act 1991, the following details have been prepared in good faith, and are not intended to constitute part of an offer or contract. Any information contained herein (whether in the text, plans or photographs) is given in good faith but should not be relied upon as being a statement of representation of fact. Nothing in these Particulars shall be deemed to be a statement that the property is in good condition or otherwise nor that any services or facilities are in good working order. Any measurements of distances referred to herein are approximate only. October 2021