



RUSSELL SIMPSON

Exceptional duplex apartment with
spacious terrace and panoramic
views

BAYSWATER ROAD
BAYSWATER W2

Bayswater Road

£4,500 P/W

BEDROOMS 3	INTERNAL 1,937 <small>SQ FT</small>	OUTDOOR 481 <small>SQ FT</small>	FURNISHED STATUS Furnished
BATHROOMS 3	179 <small>SQM</small>	EPC B	COUNCIL TAX H



The Property

Superbly appointed three-bedroom flat with spectacular outdoor space.

Entering the apartment on the fifth floor, you are welcomed by a spacious entrance hall which flows through to an impressive reception room. Full-length windows open onto three separate balconies with views across Hyde Park. The contemporary kitchen offers fitted units, integrated appliances and generous workspace, flowing seamlessly from the main living area.





The Bedrooms

On this floor is the principal bedroom, with plenty of built-in storage and a modern ensuite bathroom. A further bedroom and ensuite bathroom complete this level.

A helical staircase leads to the sixth floor, where the third bedroom provides substantial proportions with ensuite bathroom and access to the large private terrace.





The Design

The apartment is presented in superb condition throughout, decorated in a sophisticated contemporary style with wooden floors and refined finishes. Notable features include the elegant curved staircase and abundant natural light from multiple aspects.



Outdoor Spaces

The exceptional private terrace measures nearly 40 feet in length, offering panoramic views across London and substantial space for outdoor dining and entertaining. Three additional balconies provide further outdoor access from the reception room.



The Neighbourhood

Bayswater Road is a prestigious address directly opposite Hyde Park, moments away from the open spaces of Kensington Gardens and Speaker's Corner. The location offers excellent access to the upmarket boutiques of Oxford Street and Marble Arch, with superb transport connections at Marble Arch and Lancaster Gate stations.

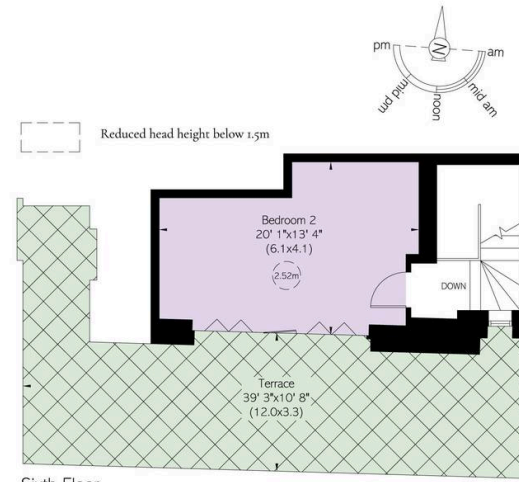
Bayswater Road, W2

Approximate Internal Area
1,937 sq ft/ 180 sq m

Including limited use area
28 sq ft/ 3 sq m
Outside Area
482 sq ft/ 45 sq m

RUSSELL SIMPSON

This plan is for layout guidance only.
Not drawn to scale unless stated. Windows
and door openings are approximate. Whilst
every care is taken in the preparation of this
plan, please check all dimensions, shapes,
and compass bearings before making any
decisions reliant upon them.



**RUSSELL
SIMPSON**

Contact Us

+44 (0) 20 3761 9691

13 Kensington Square
London
W8 5HD

kensington@russellsimpson.co.uk