

## **RUSSELL SIMPSON**

Bright two-bedroom house with  
serene interiors to rent moments  
away from Clapham Common

BAKERY PLACE  
CLAPHAM SW11

# Bakery Place

# Let

BEDROOMS 2	INTERNAL 769 SQ FT	OUTDOOR —	FURNISHED STATUS Unfurnished
BATHROOMS 2	71 SQM	EPC C	COUNCIL TAX Wandsworth Council, F



## The Property

Beautifully designed and decorated house on a charming and secluded private road

Entering the house on the ground floor, the front door opens directly onto a generous room with high ceilings and long windows. This room includes separate dining and seating areas, as well as a fitted an open-plan kitchen. Wooden floors and a modern design give this space a feeling of brightness and calm throughout.



## The Bedrooms

Upstairs are two bedrooms. The principal bedroom has an ensuite bathroom and inbuilt storage space, while the second bedroom has a bathroom next door. This recently refurbished property is presented in excellent condition. Underfloor heating keeps the rooms cosy, while west-facing windows fill them with afternoon light.







## The Neighbourhood

Ideally located with the wide open spaces of Clapham Common within walking distance, as well as Battersea Park. Northcote Road with is also close by, with a mix of boutique shops, market stalls, favourite high-end chains and a plethora of cafes. Trains frequently run from Clapham Junction station into both London Victoria and London Waterloo stations.

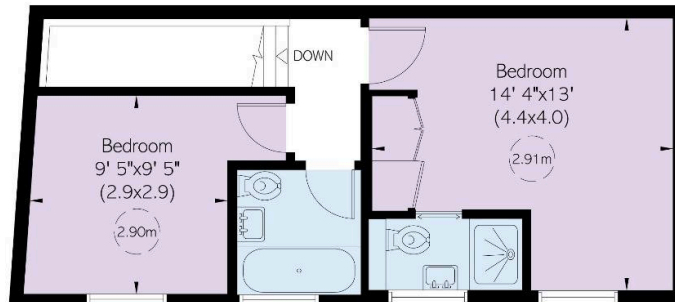
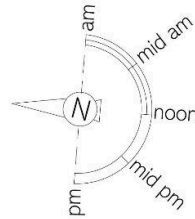


# The Stables, Bakery Place, SW11

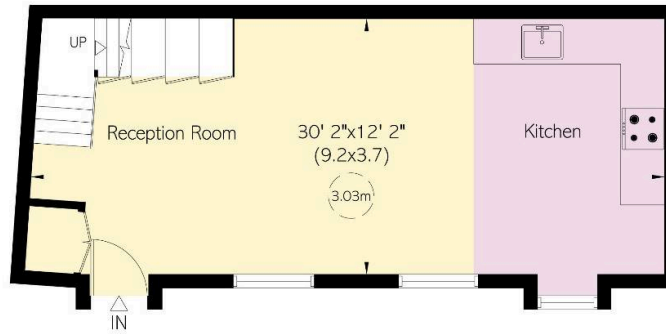
**RUSSELL  
SIMPSON**

**Approximate Internal Area**  
769 sq ft/ 71 sq m

This plan is for layout guidance only. Not drawn to scale unless stated. Windows and door openings are approximate. Whilst every care is taken in the preparation of this plan, please check all dimensions, shapes, and compass bearings before making any decisions reliant upon them.



First Floor



Ground Floor

**RUSSELL  
SIMPSON**

---

## Contact Us

+44 (0) 20 7225 0277

151A Sydney Street  
London  
SW3 6NT

[chelsea@russellsimpson.co.uk](mailto:chelsea@russellsimpson.co.uk)