



## **RUSSELL SIMPSON**

Spacious and stylish two-bedroom flat to rent in a sought-after development close to Gloucester Road

ASHBURN PLACE  
GLOUCESTER ROAD SW7

# Ashburn Place

£3,150 P/W

BEDROOMS 2	INTERNAL 1,188 <small>SQ FT</small>	OUTDOOR 119 <small>SQ FT</small>	FURNISHED STATUS Furnished
BATHROOMS 2	110 <small>SQM</small>	EPC —	COUNCIL TAX —

# The Property

Light-filled flat with contemporary interiors and two balconies in the heart of South Kensington







## Indoor Spaces

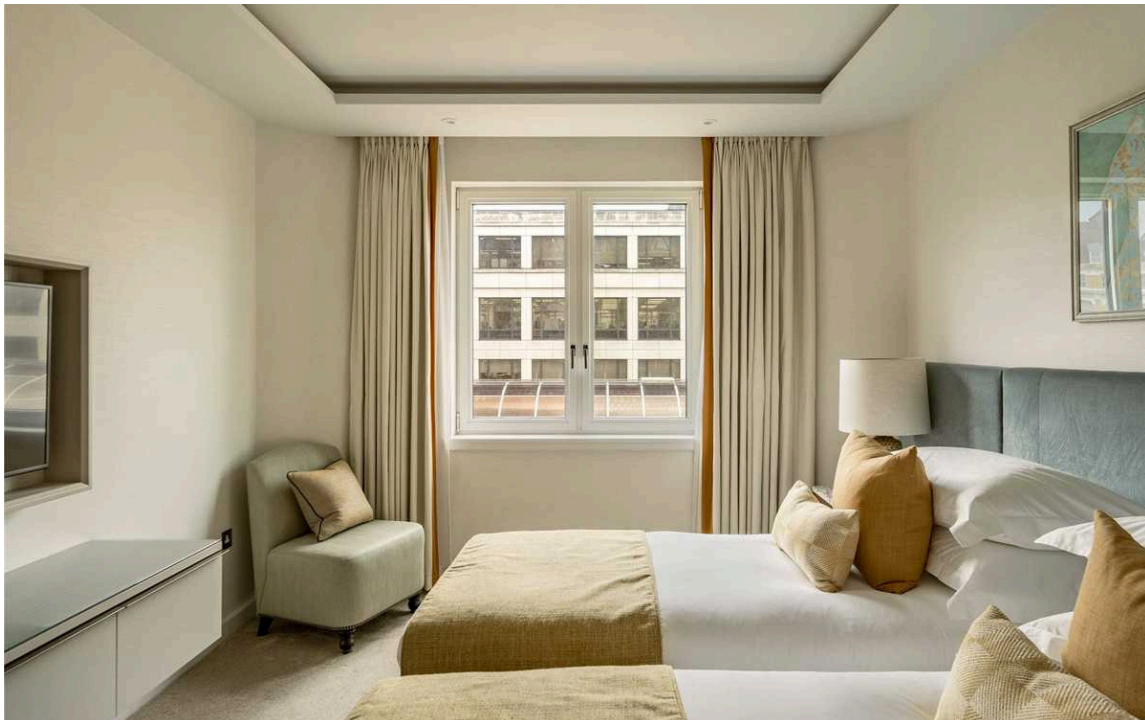
Stepping into the flat on the third floor, the front hall leads through to a well-proportioned reception room. This includes space for separate dining and seating areas, and sliding south-facing French doors opening onto the balcony. Next door is a convenient fitted kitchen.





## The Bedrooms

The other half of the flat features two bedrooms. The principal bedroom has an ensuite bathroom, inbuilt wardrobe space and sliding French doors leading onto another balcony. The second bedroom is also ensuite, while the front hall features a guest WC and further storage space.







## The Design

The property is decorated in a sophisticated contemporary fashion and presented in very good condition. Wooden floors, neutral interiors and tiled bathrooms add to the sense of space and style. It also offers combined air conditioning and heating throughout.





## The Neighbourhood

The property includes a pair of balconies. One of them is south facing, and both have enough space for outdoor seating.

Ashburn Place runs south from Cromwell Road. It is lined with apartment buildings and mansion blocks from a range of historical periods. This modern apartment building includes lifts, a porter and an opulent lobby.

From here, Gloucester Road underground station is a short walk away, while Earl's Court station is also close. In addition, the world-class museums and cultural venues of South Kensington are within easy reach.



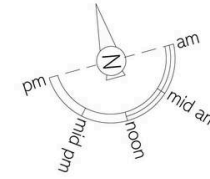
# Cheval Gloucester Park, Ashburn Place, SW7

**Approximate Internal Area**  
1,188 sq ft/ 110 sq m

**Outside Area**  
119 sq ft/ 11 sq m

## RUSSELL SIMPSON

This plan is for layout guidance only.  
Not drawn to scale unless stated. Windows  
and door openings are approximate. Whilst  
every care is taken in the preparation of this  
plan, please check all dimensions, shapes,  
and compass bearings before making any  
decisions reliant upon them.



Third Floor



**RUSSELL  
SIMPSON**

---

## Contact Us

+44 (0) 20 7225 0277

151A Sydney Street  
London  
SW3 6NT

[chelsea@russellsimpson.co.uk](mailto:chelsea@russellsimpson.co.uk)