



RUSSELL SIMPSON

Sophisticated three-bedroom house
with contemporary interiors to rent
near Kensington Gardens

ALBERT PLACE
KENSINGTON W8

Albert Place

£4,000 P/W

BEDROOMS 3	INTERNAL 2,311 <small>SQ FT</small>	OUTDOOR 429 <small>SQ FT</small>	FURNISHED STATUS Unfurnished
BATHROOMS 2	214 <small>SQM</small>	EPC E	COUNCIL TAX RBKC, H



The Property

Beautifully designed and decorated property on a quiet cul-de-sac near Kensington High Street

Stepping into the house on the raised ground floor, the entrance hall opens onto a generous double reception room. This includes a seating area and a separate study area, while high ceilings and full-length windows add to the impression of light and space.

Entertaining Spaces

The lower ground floor consists of an open-plan kitchen with modern units and a central island breakfast bar. This flows through to a dining area, with bifolding French doors that open onto the garden and bring in added brightness.





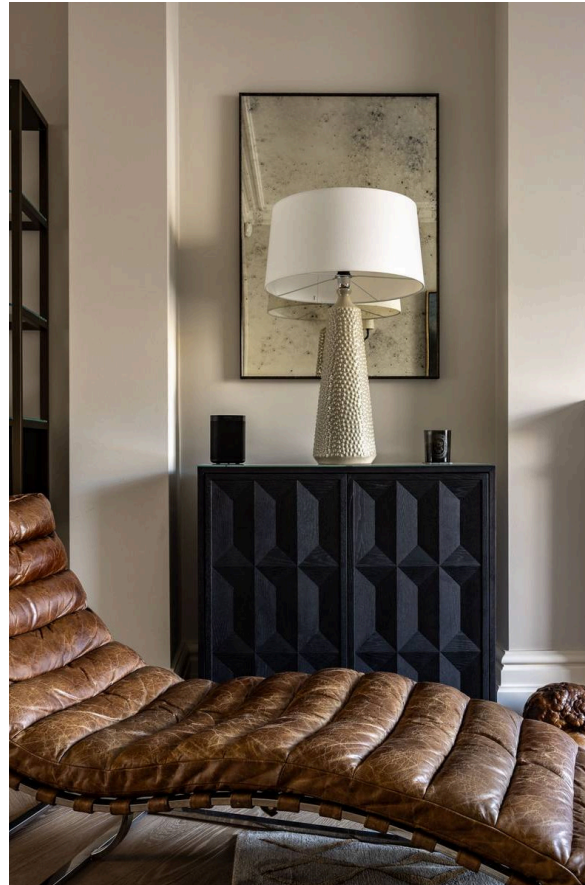
The Bedrooms

The first floor features a principal bedroom, an ensuite bathroom and a walk-in wardrobe. The second floor offers two more bedrooms, sharing a bathroom. There is also a laundry room on the half landing.



The Design

The house is decorated in a sophisticated style that blends classical elegance with contemporary convenience. Wooden floors add to the overall brightness, while the whole property is presented in superb condition.



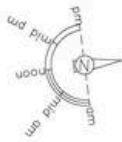
Outdoor Spaces & The Neighbourhood



The house includes a paved rear garden with enough space for outdoor seating.

Albert Place is a quiet cul-de-sac in the heart of Kensington, lined with white stucco semi-detached houses. From here, the restaurants, shops and underground station of Kensington High Street are a short walk away.

The open spaces of Kensington Gardens and Hyde Park are also nearby. Furthermore, the world-class cultural institutions of South Kensington are close, and the area is well-served with private schools.



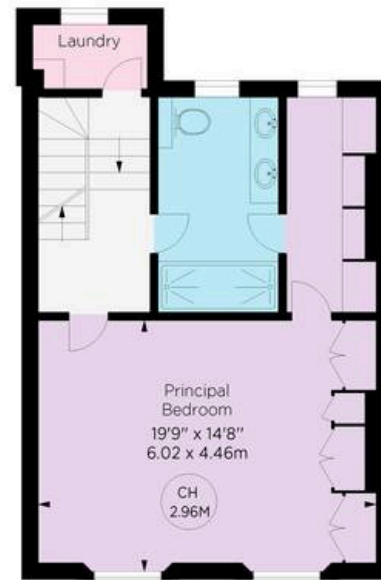
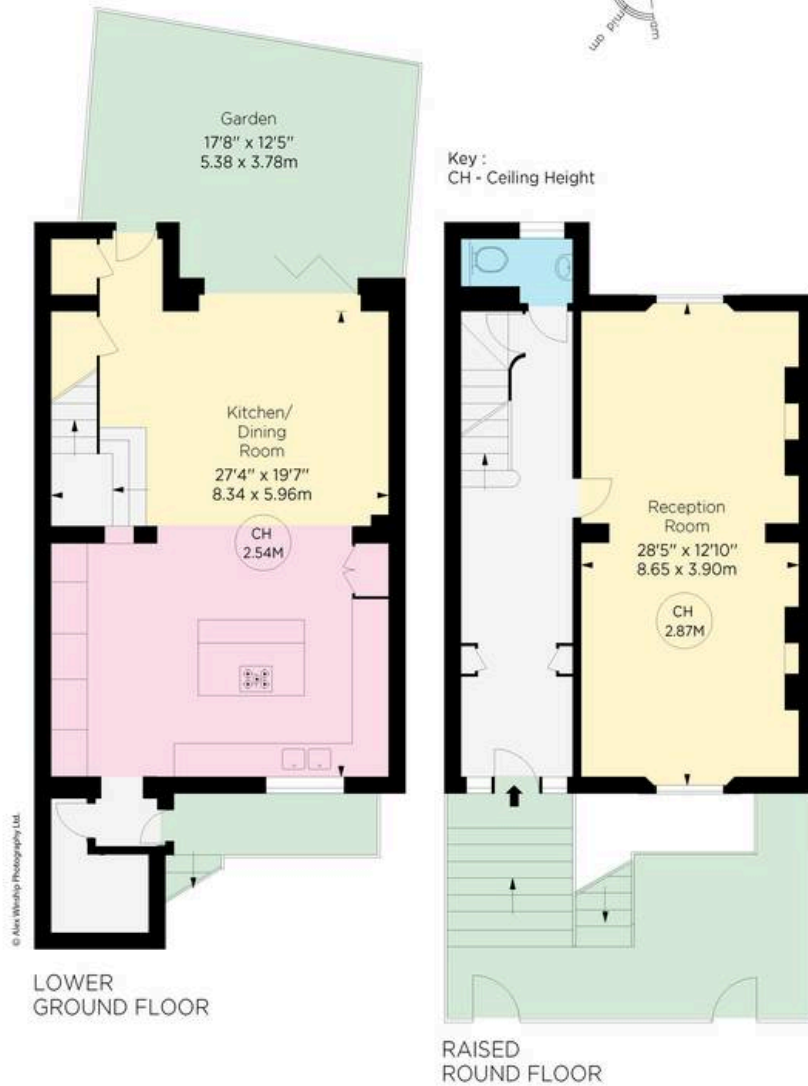
Albert Place, W8

**RUSSELL
SIMPSON**

Approximate gross internal area
2311 Sq Ft / 214.70 Sq M

Approximate outdoor area
430 Sq Ft / 40 Sq M

This plan is for layout guidance only. Not drawn to scale unless stated. Windows and door openings are approximate. Whilst every care is taken in the preparation of this plan, please check all dimensions, shapes, and compass bearings before making any decisions reliant upon them.



© Alex Winship Photography Ltd.

**ALEX
WINSHIP**
Photography

* Floorplan for guidance only, not to scale or valuations purposes. It must not be relied upon as a statement of fact. All measurements and areas are approximate and have been prepared in accordance with the current edition of the RICS Code of Measuring Practice.



**RUSSELL
SIMPSON**

Contact Us

+44 (0) 20 3761 9691

13 Kensington Square
London
W8 5HD

kensington@russellsimpson.co.uk