



RUSSELL SIMPSON

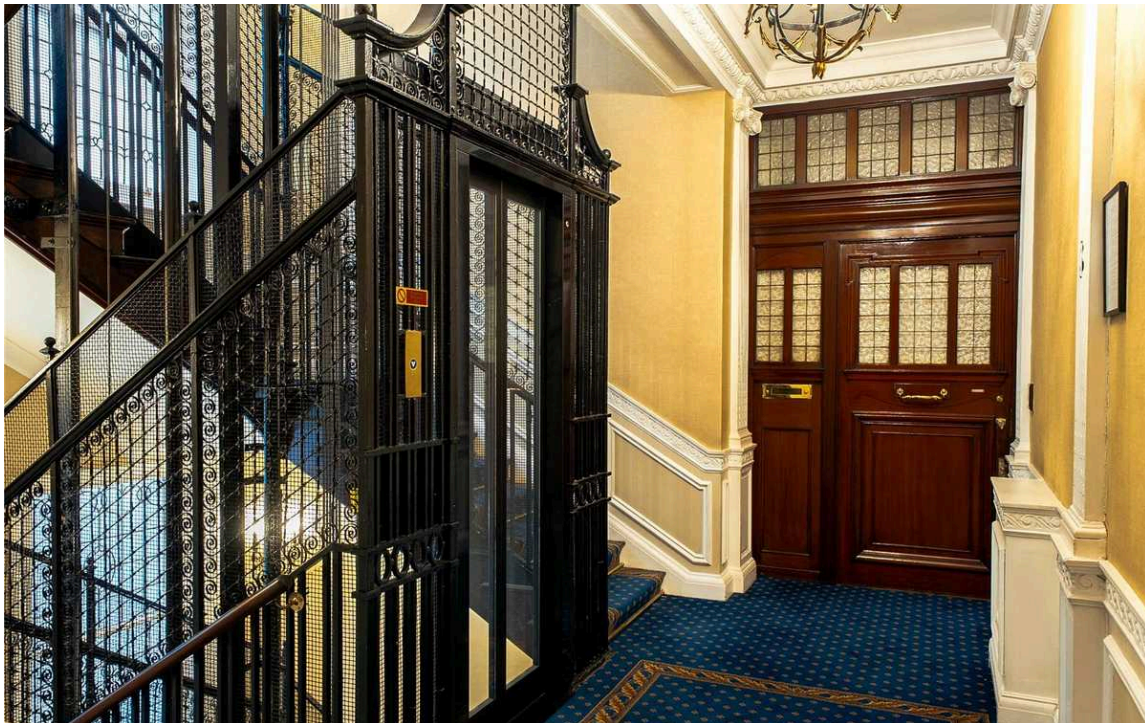
Beautiful two/three-bedroom flat
with a spacious layout and elegant
interiors in a sought-after mansion
block

WYNDHAM HOUSE
BELGRAVIA SW1W

Wyndham House

£4,650,000

BEDROOMS 2	INTERNAL 2,745 SQ FT	OUTDOOR —	COUNCIL RBKC
BATHROOMS 2	255 SQM	EPC D	COUNCIL TAX H
TENURE Leasehold	LEASE LENGTH 47 YEARS	GROUND RENT —	SERVICE CHARGE —



The Property

Exceptionally convenient flat in an attractive classical building on the corner of Sloane Square

Stepping into the flat on the third floor, the entrance foyer leads into a central hallway. This opens onto a dining room, which in turn flows through to a generous reception room. Both these rooms offer ornate cornices and moulded ceilings, while the latter also features an opulent marble fireplace surround.

The flat also features two bedrooms. One of these has an ensuite bathroom, while the other has a bathroom opposite. A third reception room could also be used as an additional bedroom.

At the far end of the flat there is a well-proportioned kitchen with fitted wooden units, leading through to a separate pantry. A utility room and a guest WC complete the layout. Leading through to a service lift

The property's large and light-filled interiors and decorated in a restrained fashion, adding to the sense of space.

The flat is part of an impressive mansion block clad in Portland stone. This classical building was constructed in the early twentieth century and named after the London residence of the aristocratic Wyndham family. It provides both lift and porter.



The Neighbourhood

Wyndham House is conveniently located on the southeast corner of Sloane Square. From here, the many restaurants and independent boutiques of Chelsea and Knightsbridge are within walking distance. The world-class cultural institutions of South Kensington are also nearby.

**RUSSELL
SIMPSON**

Contact Us

+44 (0) 20 7225 0277

151A Sydney Street
London
SW3 6NT

chelsea@russellsimpson.co.uk