

## **RUSSELL SIMPSON**

Discretely and securely tucked away  
behind the elegant stucco façades of  
Hereford Square

WETHERBY PLACE  
SOUTH KENSINGTON SW7

# Wetherby Place

# Sold

BEDROOMS 5	INTERNAL 3,240 SQ FT	OUTDOOR 785 SQ FT	COUNCIL TAX H
BATHROOMS 4	301 SQM	EPC D	TENURE Freehold



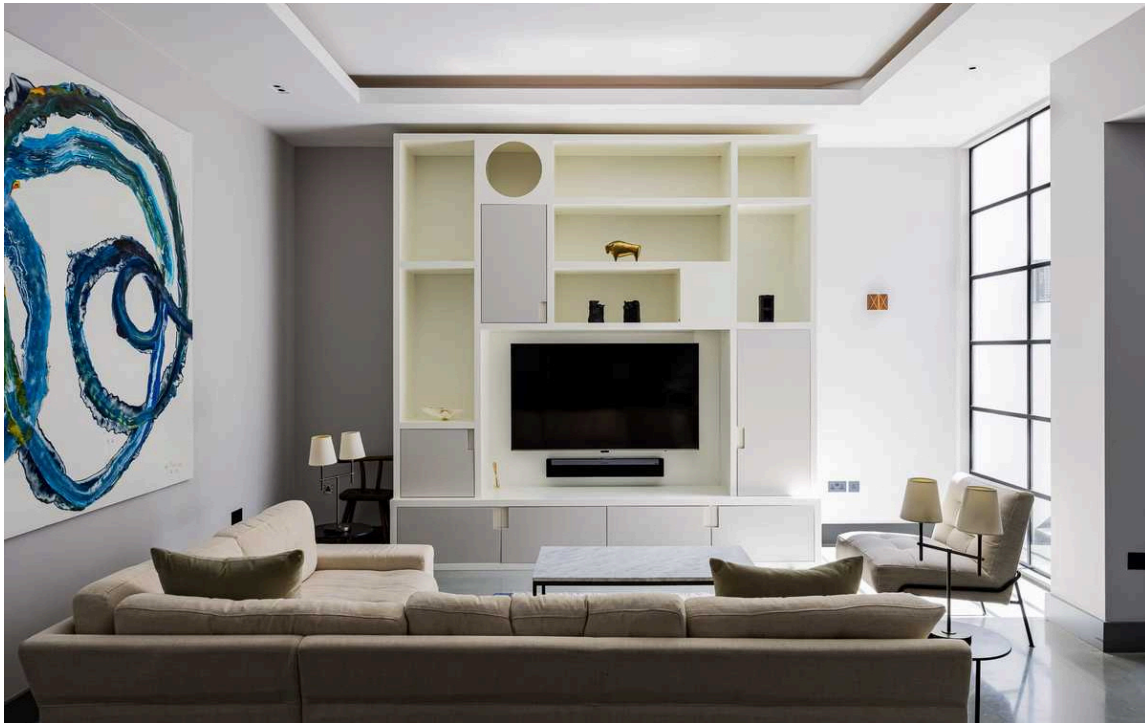
## The Property

This exceptional five bedroom period house has recently been remodelled by architects to offer stunning accommodation with tremendous volume.









## Indoor Spaces

Finished to the highest standard and on four floors only, it is built around a secluded south-facing patio garden accessible from the main ground floor reception room as well as the open-plan kitchen/ dining room/ family room. Other benefits include polished concrete, wood or stone floors throughout, underfloor heating and air-conditioning to the bedrooms.







## The Neighbourhood

Wetherby Place runs directly off Hereford Square close to Gloucester Road and South Kensington, both of which offer excellent transport links (including Circle, District & Piccadilly

Underground lines) as well as an array of shops, bars and restaurants. The A4 provides easy access west to Heathrow Airport and beyond.

## Wetherby Cottage, Wetherby Place, SW7

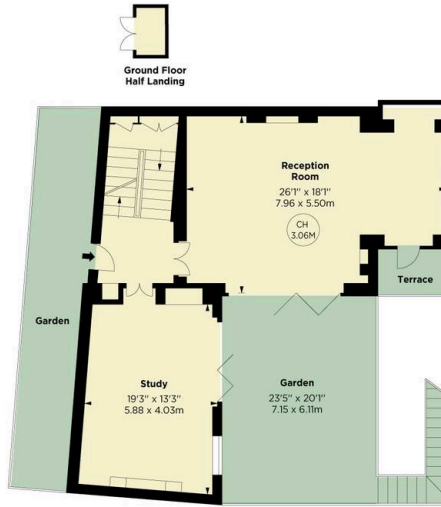
APPROX. GROSS INTERNAL AREA\*  
3240 Sq Ft - 301.12 Sq M

APPROX. EXTERNAL AREA  
(Patios, Terrace & Gardens)\*

786 Sq Ft - 73.06 Sq M

This floorplan is for GUIDANCE ONLY and NOT FOR VALUATION purposes.

Key:  
CH - Ceiling Height



**ALEX WINSHIP**

\*Responsible for published details, not to be taken as a guarantee of accuracy. All dimensions and areas are approximate and subject to change without notice.



**RUSSELL  
SIMPSON**

---

## Contact Us

+44 (0) 20 7225 0277

Contact us

[info@russellsimpson.co.uk](mailto:info@russellsimpson.co.uk)

---

## Sydney Street

+44 (0) 20 7225 0277

151A Sydney Street

London

SW3 6NT

[chelsea@russellsimpson.co.uk](mailto:chelsea@russellsimpson.co.uk)

---

## Kensington Square

+44 (0) 20 3761 9691

13 Kensington Square

London

W8 5HD

[kensington@russellsimpson.co.uk](mailto:kensington@russellsimpson.co.uk)