

RUSSELL SIMPSON

Impressive four-bedroom family
home close to Kensington High
Street

WARWICK GARDENS
KENSINGTON W14

Warwick Gardens

£3,950,000

BEDROOMS 4	INTERNAL 3,161 SQ FT	OUTDOOR 1,779 SQ FT	COUNCIL TAX RBKC, H
BATHROOMS 3	293 SQM	EPC E	TENURE Freehold



The Property

Beautiful white stucco semi-detached house with a pair of generous gardens, within walking distance of Holland Park.



Indoor Spaces

Entering the house on the raised ground floor, the front hall opens onto the main reception room. This is a wide space, which also occupies the entire length of the house, with a double aspect provided by the front and rear windows. In addition, the rear windows open onto a balcony with garden views, while stained glass panes on the front window add a sense of elegance. At the far end of the house is a family room with a vaulted ceiling, which is part of a spacious extension.





Entertaining Spaces

Downstairs, on the lower ground floor, there is an open-plan kitchen with a central island and attached dining room. A set of bifolding windows at the end of the dining open onto the garden. This floor also contains a utility room, storage space, and a bedroom with next-door bathroom.

img 1

Kitchen

img 2

Dining Room





The Bedrooms

The first-floor is almost entirely occupied by the principal bedroom suite. As well as a garden-facing bedroom, there is a well-proportioned bathroom and a walk-in wardrobe. In addition, this floor contains a study on the half-landing.

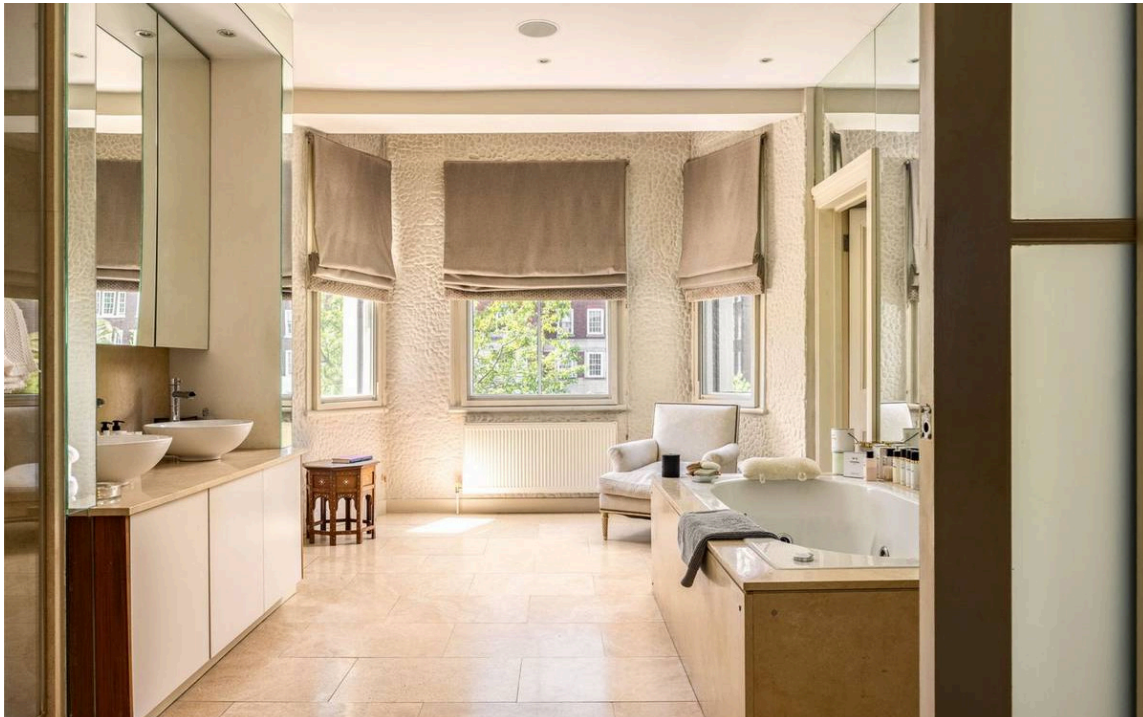
The second floor includes two more bedrooms and a shared bathroom.

img 1

Bedroom

img 2

Principal Bathroom



Outdoor Spaces

The property offers a rear garden with a large lawn, planted flowerbeds and a paved area for outdoor dining. In addition, there is a fenced front garden providing some separation from the street. Finally, a pair of rear-facing balconies give views over the garden.



img 1

Balcony View



img 2

Large Garden

The Neighbourhood

Warwick Gardens is lined with a mix of early Victorian villas with white stucco facades, as well as Revival style mansion blocks. The street was once home to the writer G.K. Chesterton, who created the Father Brown mysteries. Today, Warwick Gardens is conveniently positioned for the shops, restaurants and underground station of Kensington High Street. In addition, the entrance to Holland Park is a short walk away. The area is also well-served with local schools.



**RUSSELL
SIMPSON**

Contact Us

+44 (0) 20 7225 0277

Contact us

info@russellsimpson.co.uk

Sydney Street

+44 (0) 20 7225 0277

151A Sydney Street
London
SW3 6NT

chelsea@russellsimpson.co.uk

Kensington Square

+44 (0) 20 3761 9691

13 Kensington Square
London
W8 5HD

kensington@russellsimpson.co.uk