

## **RUSSELL SIMPSON**

Unique three-bedroom penthouse  
apartment on Chelsea's oldest road

WALDRON HOUSE  
CHELSEA SW3

# Waldron House

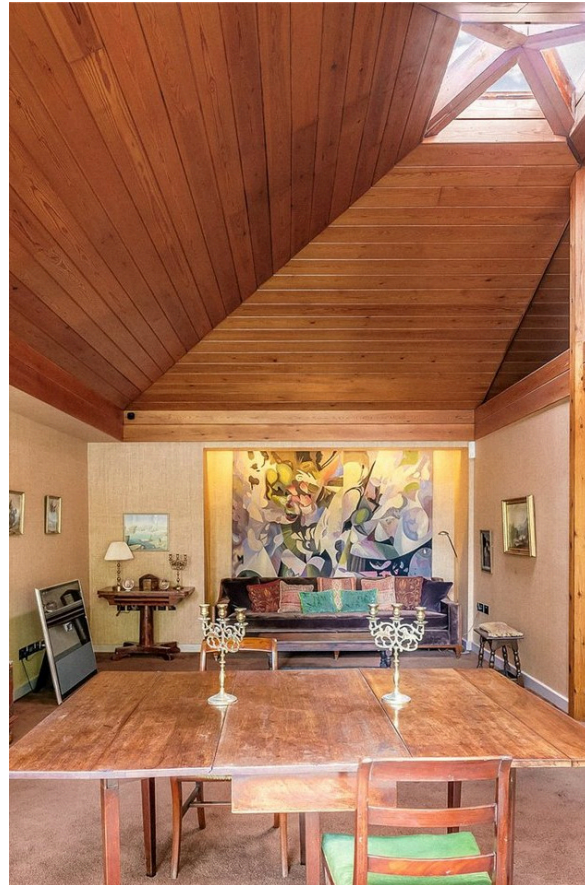
# Sold

BEDROOMS 3	INTERNAL 1,357 SQ FT	OUTDOOR 127 SQ FT	COUNCIL —
BATHROOMS 2	126 SQM	EPC B	COUNCIL TAX H
TENURE Share of freehold	LEASE LENGTH 984 YEARS	GROUND RENT —	SERVICE CHARGE £14,298 P/Y

## The Property

Spacious and stylish duplex flat with two terraces and light-filled rooms close to the King's Road

Entering the flat on the fourth floor, the front hall flows through to a spacious reception room. As well as enough space for separate dining and seating areas, the unusually high timber ceiling is topped with skylights, creating a bright and lofty room. Furthermore, sliding French doors open onto a terrace with garden views. This floor also contains a fitted kitchen, a guest WC and additional storage space.







## Indoor Spaces

The third floor consists of three bedrooms. The principal bedroom has an ensuite bathroom with a bath, a walk-in wardrobe and sliding French doors that lead to a west-facing terrace. The other two bedrooms have their own wardrobe space and share a bathroom.







## The Design

The property is decorated in a calm, contemporary style that emphasises the sense of brightness and space throughout. It is presented in good condition.







## The Neighbourhood

The property includes two terraces with enough space for seating and outdoor plants. Furthermore, Waldron House is a striking 1970s development in Chelsea, which offers residents lifts, a porter, a landscaped courtyard and underground parking.

Old Church Street is the oldest street in Chelsea. Over the years it has been home to numerous artists and architects, musicians and writers, with a unique mix of Georgian, Victorian and Modern architecture. The property is within walking distance of the King's Road, with its many celebrated shops and restaurants. In addition, the Chelsea Embankment and Battersea Park are both in easy reach.

Waldron House,  
Old Church Street, SW<sub>3</sub>

**RUSSELL  
SIMPSON**

**Approximate Internal Area**

1,357 sq ft / 126 sq m

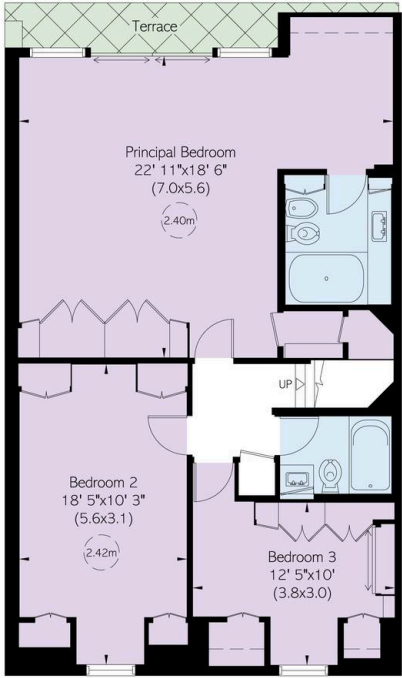
**Including limited use area**

11 sq ft / 1 sq m

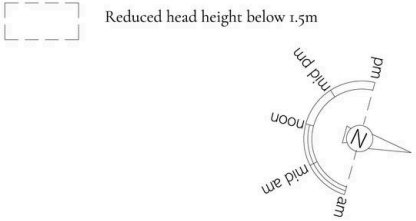
**Outside Area**

127 sq ft / 12 sq m

This plan is for layout guidance only. Not drawn to scale unless stated. Windows and door openings are approximate. Whilst every care is taken in the preparation of this plan, please check all dimensions, shapes, and compass bearings before making any decisions reliant upon them.



Third Floor



Fourth Floor

**RUSSELL  
SIMPSON**

---

## Contact Us

+44 (0) 20 7225 0277

151A Sydney Street  
London  
SW3 6NT

[chelsea@russellsimpson.co.uk](mailto:chelsea@russellsimpson.co.uk)