

RUSSELL SIMPSON

An exquisitely renovated duplex flat,
with a stunning south-west facing
terrace in the heart of Old Chelsea

TITE STREET
CHELSEA SW3

Tite Street

£2,775,000

<div>BEDROOMS</div> <div>3</div>	<div>INTERNAL</div> <div>1,570 <small>SQ FT</small></div> <div>145 <small>SQM</small></div>	<div>OUTDOOR</div> <div>128 <small>SQ FT</small></div>	<div>COUNCIL</div> <div>RBKC</div>
<div>BATHROOMS</div> <div>3</div>		<div>EPC</div> <div>C</div>	<div>COUNCIL TAX</div> <div>G</div>
<div>TENURE</div> <div>Leasehold</div>	<div>LEASE LENGTH</div> <div>981 <small>YEARS</small></div>	<div>GROUND RENT</div> <div>—</div>	<div>SERVICE CHARGE</div> <div>£5,843 <small>P/Y</small></div>

The Property

A three-bedroom, three bathroom flat with bright and alluring interiors, in a beautiful Victorian building with air conditioning.





The Bedrooms

The property occupies the third and fourth floors of a handsome red brick building. The third floor offers a well-proportioned principal bedroom, with a corridor wardrobe and impressive ensuite bathroom, including both shower and bath. This floor also contains a second ensuite bedroom and a spare room, cleverly connecting to the principal bedroom so it could be used as either a study, or a nursery. The fourth floor contains a third, double bedroom, with next-door bathroom.





Reception Room

The fourth floor is centred on a generous reception room, with enough space for separate dining and seating areas. This room communicates with an open-plan kitchen with a breakfast bar, while a pair of double French doors open onto the roof terrace.

The Design

The interiors are newly renovated in a contemporary fashion, with bright colours and high-quality finishes adding to the sense of style.





Outdoor Spaces

The property includes a paved, south-west facing balcony with enough space for outdoor dining.



The Neighbourhood

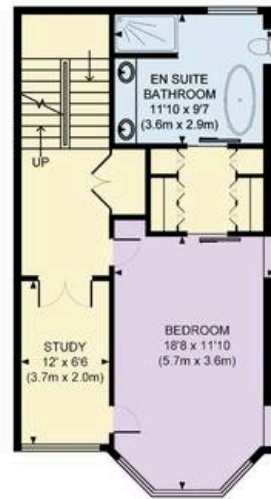
Tite Street was laid out in 1877 and soon became home to many of the neighbourhood's cultural figures. Celebrated residents including the writer Oscar Wilde and the painters Augustus John, James McNeill Whistler and John Singer Sargent. Today it is a picturesque street in the heart of Old Chelsea, much of it lined with red brick properties. From here, the restaurants and shops of the King's Road are close, while Sloane Square underground station is a short walk away.

Tite Street
SW3

Approx Gross Internal Area
1,570 sq ft / 145.9 sq m

**RUSSELL
SIMPSON**

This plan is for layout guidance only. Not drawn to scale unless stated. Windows and door openings are approximate. Whilst every care is taken in the preparation of this plan, please check all dimensions, shapes, and compass bearings before making any decisions reliant upon them.



THIRD FLOOR



FOURTH FLOOR



HALF LANDING
ENTRANCE LEVEL PLAN



BEDROOM
HALF LANDING LEVEL

**RUSSELL
SIMPSON**

Contact Us

+44 (0) 20 7225 0277

151A Sydney Street
London
SW3 6NT

chelsea@russellsimpson.co.uk

In accordance with the Property Mis-Description Act 1991, the following details have been prepared in good faith, and are not intended to constitute part of an offer or contract. Any information contained herein (whether in the text, plans or photographs) is given in good faith but should not be relied upon as being a statement of representation of fact. Nothing in these Particulars shall be deemed to be a statement that the property is in good condition or otherwise nor that any services or facilities are in good working order. Any measurements of distances referred to herein are approximate only. October 2021