



## **RUSSELL SIMPSON**

An exquisitely renovated duplex flat,  
with a stunning south-west facing  
terrace in the heart of Old Chelsea

TITE STREET  
CHELSEA SW3

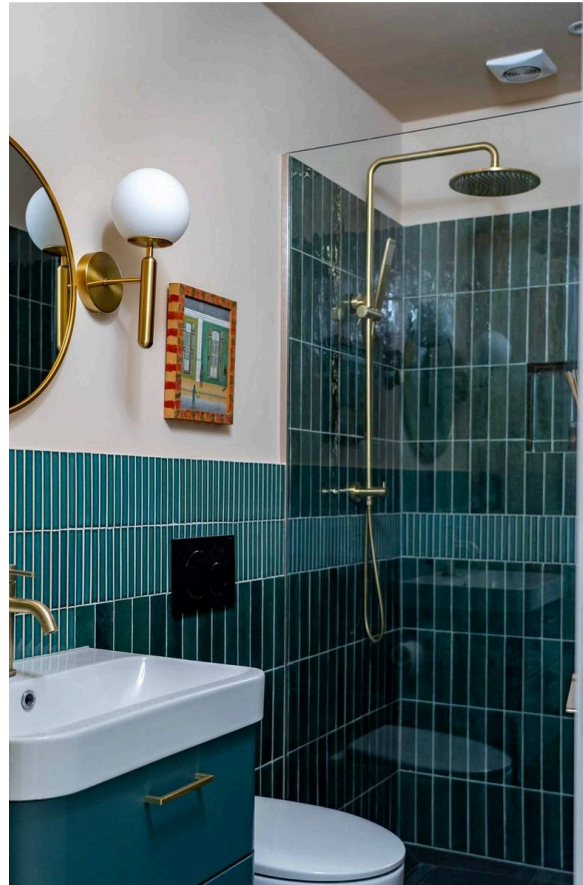
Tite Street

£3,300,000

BEDROOMS 3	INTERNAL 1,570 SQ FT	OUTDOOR 128 SQ FT	COUNCIL RBKC
BATHROOMS 3	145 SQM	EPC C	COUNCIL TAX G
TENURE Leasehold	LEASE LENGTH 982 YEARS	GROUND RENT —	SERVICE CHARGE —

# The Property

A three-bedroom, three bathroom flat with bright and alluring interiors, in a beautiful Victorian building with air conditioning.







## Indoor Spaces

The property occupies the third and fourth floors of a handsome red brick building. The third floor offers a well-proportioned principal bedroom, with a corridor wardrobe and impressive ensuite bathroom, including both shower and bath. This floor also contains a second ensuite bedroom and a spare room, cleverly connecting to the principal bedroom so it could be used as either a study, or a nursery.

The fourth floor is centred on a generous reception room, with enough space for separate dining and seating areas. This room communicates with an open-plan kitchen with a breakfast bar, while a pair of double French doors open onto the roof terrace.



## The Bedrooms

This floor also contains a third, double bedroom, with next-door bathroom. The interiors are newly renovated in a contemporary fashion, with bright colours and high-quality finishes adding to the sense of style.





## Outdoor Spaces

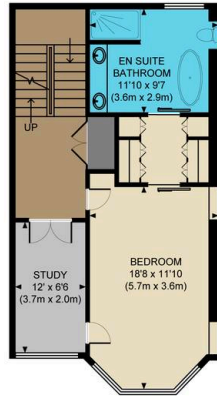
The property includes a paved, south-west facing balcony with enough space for outdoor dining.





## The Neighbourhood

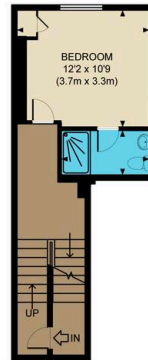
Tite Street was laid out in 1877 and soon became home to many of the neighbourhood's cultural figures. Celebrated residents including the writer Oscar Wilde and the painters Augustus John, James McNeill Whistler and John Singer Sargent. Today it is a picturesque street in the heart of Old Chelsea, much of it lined with red brick properties. From here, the restaurants and shops of the King's Road are close, while Sloane Square underground station is a short walk away.



THIRD FLOOR




FOURTH FLOOR



HALF LANDING  
ENTRANCE LEVEL PLAN



BEDROOM  
HALF LANDING LEVEL

<b>APPROX. GROSS INTERNAL FLOOR AREA 1570 SQ FT / 145.9 SQM</b>	<b>Tite Street</b>
Disclaimer: Floor plan measurements are approximate and are for illustrative purposes only. While we do not doubt the floor plan accuracy and completeness, you or your advisors should conduct a careful, independent investigation of the property in respect of monetary valuation	date 5/10/23
	<b>photoplan</b> 



**RUSSELL  
SIMPSON**

---

## Contact Us

+44 (0) 20 7225 0277

Contact us

[info@russellsimpson.co.uk](mailto:info@russellsimpson.co.uk)

---

## Sydney Street

+44 (0) 20 7225 0277

151A Sydney Street

London

SW3 6NT

[chelsea@russellsimpson.co.uk](mailto:chelsea@russellsimpson.co.uk)

---

## Kensington Square

+44 (0) 20 3761 9691

13 Kensington Square

London

W8 5HD

[kensington@russellsimpson.co.uk](mailto:kensington@russellsimpson.co.uk)