



**RUSSELL  
SIMPSON**

Thurloe Square

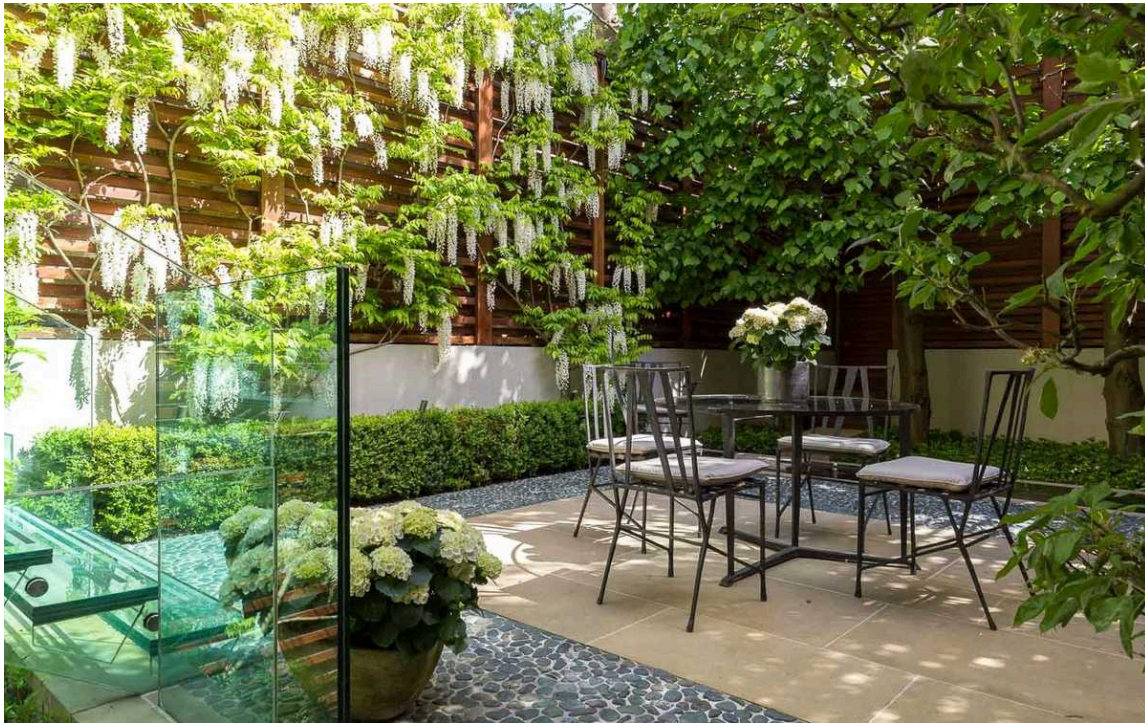
THURLOE SQUARE  
SOUTH KENSINGTON SW7

Thurloe Square

Sold

BEDROOMS 6	INTERNAL  4,980 SQ FT  462 SQM	OUTDOOR  —	COUNCIL TAX  SKE
BATHROOMS 4		EPC G	TENURE Freehold





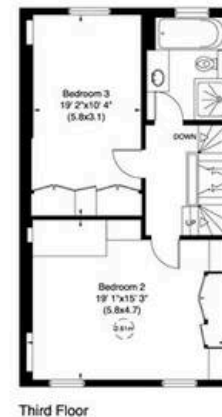
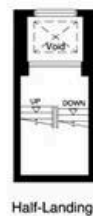
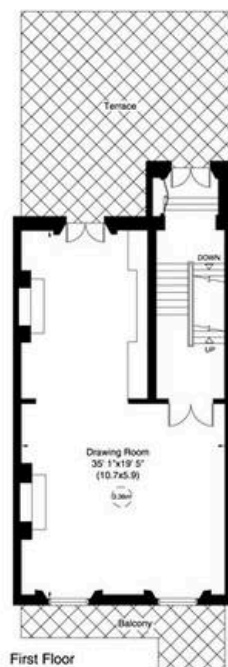
## The Property

An exquisitely presented immaculate family house occupying a prime position in the square, sitting in the middle of the quieter eastern terrace, enjoying far-reaching green views to the west over the square gardens.

This is a magnificent and elegant, Grade II Listed stucco-fronted six bedroom house has been intelligently configured and meticulously refurbished throughout by the current owners to the highest standard, using the finest materials. The house offers outstanding family accommodation with an excellent array of formal and informal entertaining space complimented by an outstanding master bedroom suite, four generous children's bedrooms and a beautiful guest bedroom suite.

A large and beautifully designed rear garden and roof terrace offers excellent and private outdoor space. The property is entitled to apply for access to the private square gardens.





**Thurloe Square, SW7**  
 Gross internal area (approx.)  
 463 Sq m (4980 Sq ft) Including Vaults and Under 1.5m  
 452 Sq m (4858 Sq ft) Excluding Vaults and Under 1.5m  
 For identification only, Not to Scale  
 Floor Plan by **capital group** 020 8621 7722



Not to scale, for guidance only and must not be relied upon as a statement of fact. All measurements and areas are approximate only (and have been prepared in accordance with the current edition of the RICS Code of Measuring Practice).

**RUSSELL  
SIMPSON**

---

## Contact Us

+44 (0) 20 7225 0277

Contact us

[info@russellsimpson.co.uk](mailto:info@russellsimpson.co.uk)

---

## Sydney Street

+44 (0) 20 7225 0277

151A Sydney Street

London

SW3 6NT

[chelsea@russellsimpson.co.uk](mailto:chelsea@russellsimpson.co.uk)

---

## Kensington Square

+44 (0) 20 3761 9691

13 Kensington Square

London

W8 5HD

[kensington@russellsimpson.co.uk](mailto:kensington@russellsimpson.co.uk)