

## **RUSSELL SIMPSON**

Stylish three-bedroom maisonette on  
a popular mews

SYDNEY MEWS  
CHELSEA SW3

# Sydney Mews

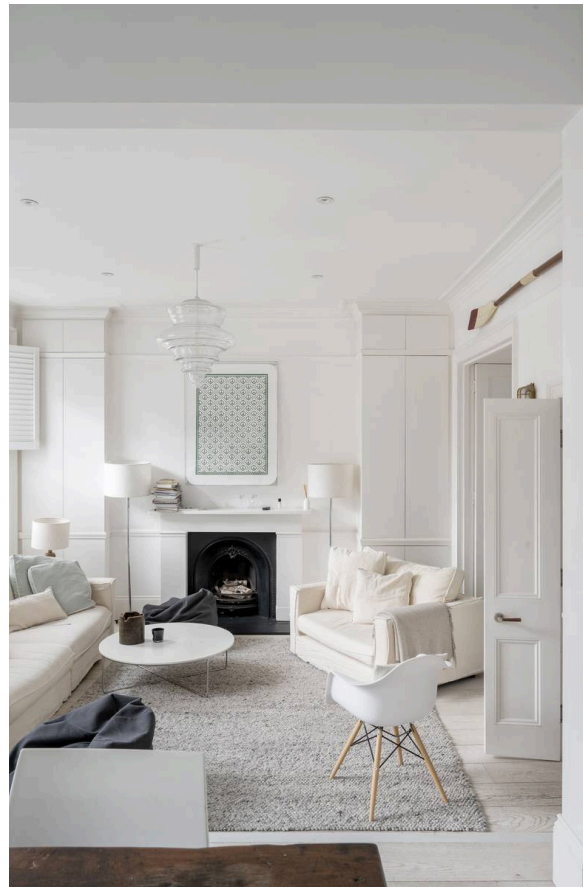
£2,495,000

BEDROOMS 3	INTERNAL 1,509 SQ FT	OUTDOOR —	COUNCIL RBKC
BATHROOMS 2	140 SQM	EPC C	COUNCIL TAX G
TENURE Leasehold	LEASE LENGTH 117 YEARS	GROUND RENT —	SERVICE CHARGE —

## The Property

Carefully designed flat moments away from the Fulham Road

Entering the property on the ground floor, a staircase leads up the first-floor living space. The generous reception room flows through to an elevated dining area, with high ceilings and south-east facing sash windows providing a sense of brightness and openness.





## Indoor Spaces

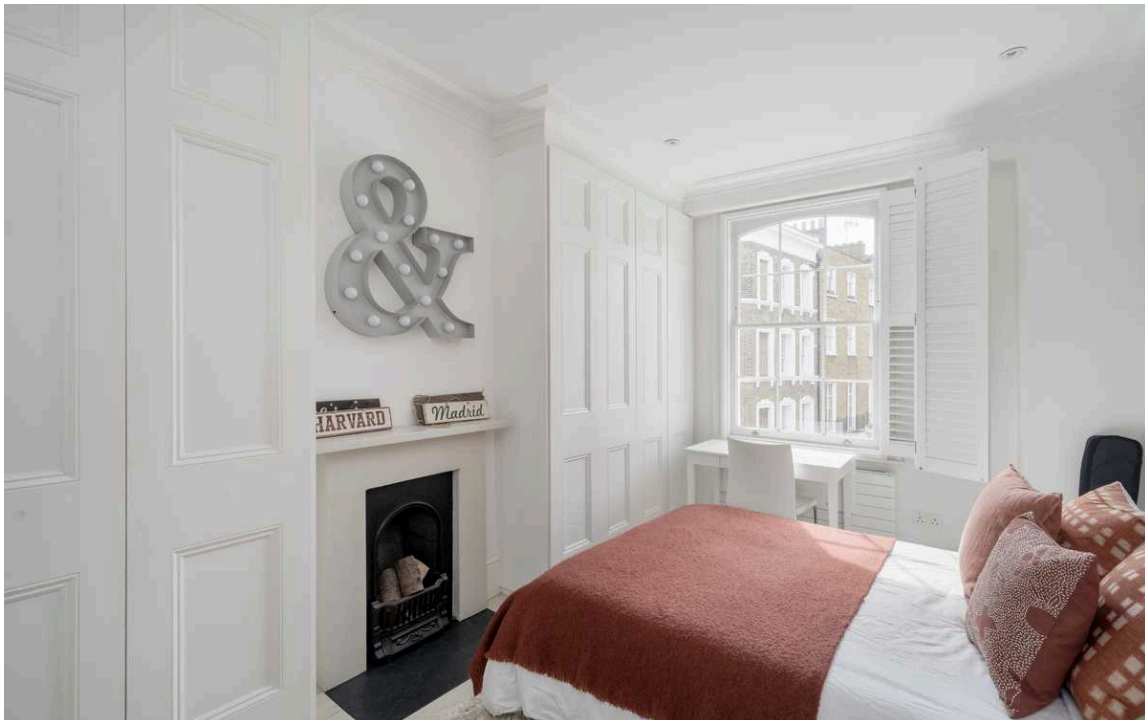
On one side, double doors communicate with a study, or television room, while on the other side sliding doors lead into a fitted kitchen with considerable storage.





## The Bedrooms

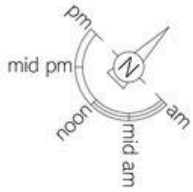
The second floor features three bedrooms sharing a pair of bathrooms. The principal bedroom is well-proportioned, while the second-floor half landing offers an extra study. The interiors are presented in good condition. Wooden floors, shutters and paneled storage units give a sense of elegance and calm. What's more, the well-lit rooms at the front of the house enjoy open views down the length of Sydney Street towards St Luke's Church, Chelsea.





## The Neighbourhood

Sydney Mews is a private, partially cobbled cul-de-sac leading off the Fulham Road. From here, the many restaurants, shops and cafes of Chelsea are close. In addition, South Kensington underground station is a short walk away, along with the neighbourhood's outstanding museums and cultural institutions.



# Sydney Mews, SW3

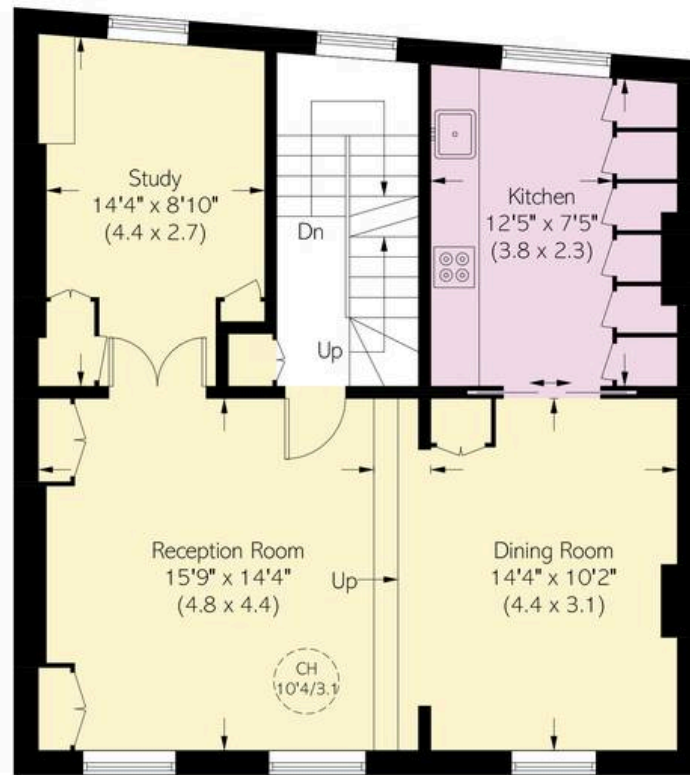
**Approximate area**  
1509 sq ft / 140.2 sq m

**RUSSELL  
SIMPSON**

This plan is for layout guidance only. Not drawn to scale unless stated. Windows and door openings are approximate. Whilst every care is taken in the preparation of this plan, please check all dimensions, shapes, and compass bearings before making any decisions reliant upon them.



Ground Floor



First Floor



Second Floor

**RUSSELL  
SIMPSON**

---

## Contact Us

+44 (0) 20 7225 0277

Contact us

[info@russellsimpson.co.uk](mailto:info@russellsimpson.co.uk)

---

## Sydney Street

+44 (0) 20 7225 0277

151A Sydney Street

London

SW3 6NT

[chelsea@russellsimpson.co.uk](mailto:chelsea@russellsimpson.co.uk)

---

## Kensington Square

+44 (0) 20 3761 9691

13 Kensington Square

London

W8 5HD

[kensington@russellsimpson.co.uk](mailto:kensington@russellsimpson.co.uk)