



## **RUSSELL SIMPSON**

Elegant and well-proportioned flat  
in the heart of Chelsea

ST LOO COURT  
CHELSEA SW3

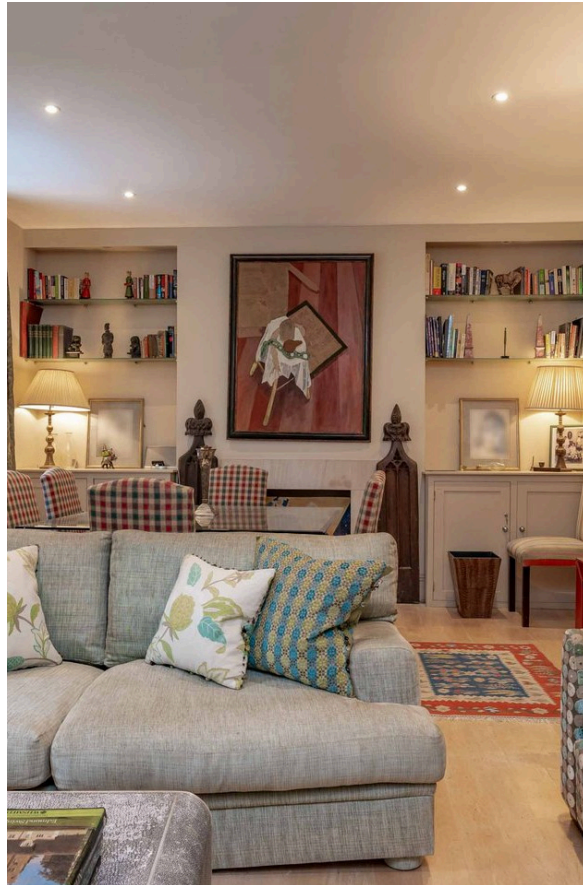
# St Loo Court

# Sold

BEDROOMS 2	INTERNAL 950 SQ FT	OUTDOOR —	COUNCIL RBKC
BATHROOMS 2	88 SQM	EPC D	COUNCIL TAX G
TENURE Share of freehold	LEASE LENGTH 946 YEARS	GROUND RENT —	SERVICE CHARGE £6,598 P/Y

# The Property

Tasteful two-bedroom flat in a grand mansion block with a lift close to the River Thames



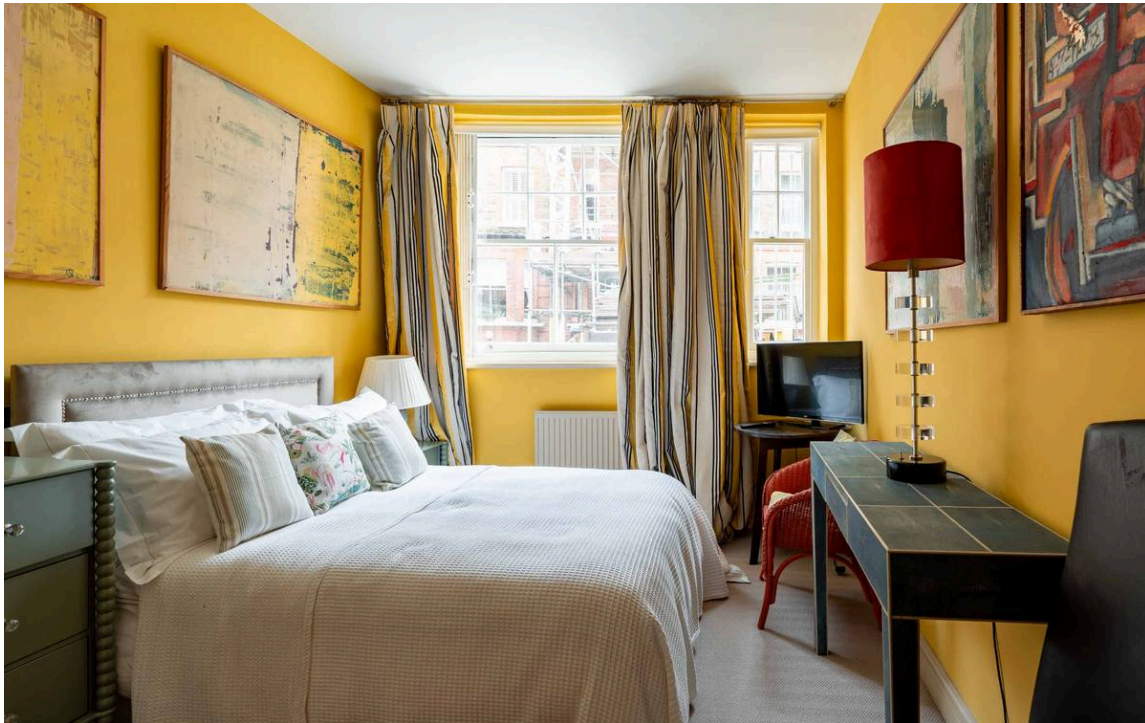
img 1

Kitchen

img 2

Reception Room





## Indoor Spaces

Entering the flat on the ground floor, the front hall leads through to a spacious reception room. South-facing sash windows ensure this space is filled with light, while the room also contains enough space for separate dining and seating areas.

On the other side of the flat is a principal bedroom with inbuilt storage space and an ensuite bathroom. In addition, the flat contains a second, double bedroom, and second bathroom. A fitted kitchen completes the property.

---

img 1

Double Bedroom

---

img 2

Principal Bedroom



# St Loo Court

St Loo Court is an impressive red-brick mansion block with a lift and caretaker.



---

img 1

Exterior

img 2

Bedroom Details





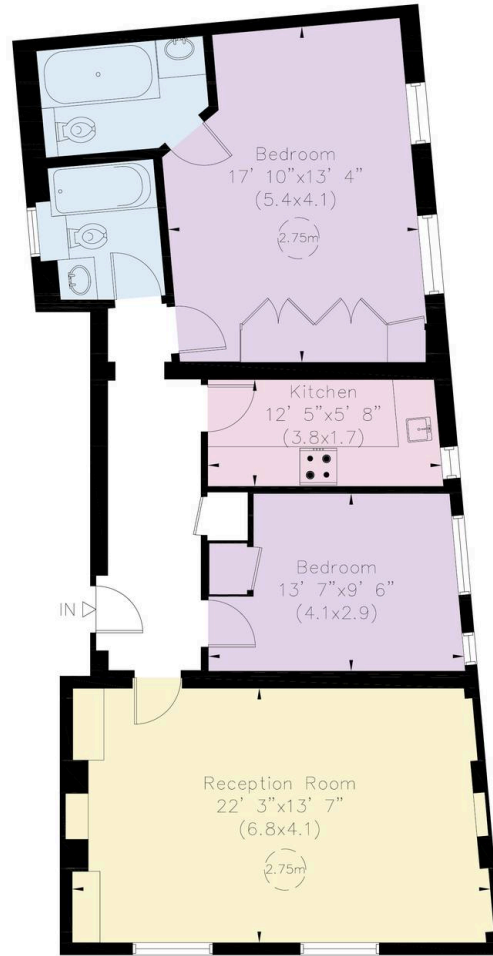
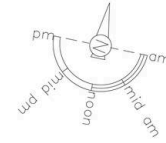
## The Neighbourhood

St Loo Avenue is a quiet residential street in the heart of old Chelsea. The restaurants and shops of the King's Road are close, while the River Thames, the Albert Bridge and the open spaces of Battersea Park are also nearby. In addition, the private parkland of the Chelsea Physic Garden is a few moments' walk away.

St. Loo Court, SW3  
Approximate Internal Area  
950 sq ft / 88 sq m

**RUSSELL  
SIMPSON**

This plan is for layout guidance only.  
Not drawn to scale unless stated. Windows and door  
openings are approximate. Whilst every care is taken in  
the preparation of this plan, please check all  
dimensions, shapes, and compass bearings before  
making any decisions reliant upon them.



Ground Floor

**RUSSELL  
SIMPSON**

---

## Contact Us

+44 (0) 20 7225 0277

Contact us

[info@russellsimpson.co.uk](mailto:info@russellsimpson.co.uk)

---

## Sydney Street

+44 (0) 20 7225 0277

151A Sydney Street

London

SW3 6NT

[chelsea@russellsimpson.co.uk](mailto:chelsea@russellsimpson.co.uk)

---

## Kensington Square

+44 (0) 20 3761 9691

13 Kensington Square

London

W8 5HD

[kensington@russellsimpson.co.uk](mailto:kensington@russellsimpson.co.uk)