



RUSSELL SIMPSON

Beautiful five-bedroom house with
two studies, a terrace and garden

SOUTH EATON PLACE
BELGRAVIA SW1W

South Eaton Place

£4,750,000

BEDROOMS 5	INTERNAL 2,564 SQ FT	OUTDOOR 945 SQ FT	COUNCIL TAX Westminster City, H
BATHROOMS 3	238 SQM	EPC D	TENURE Freehold



The Property

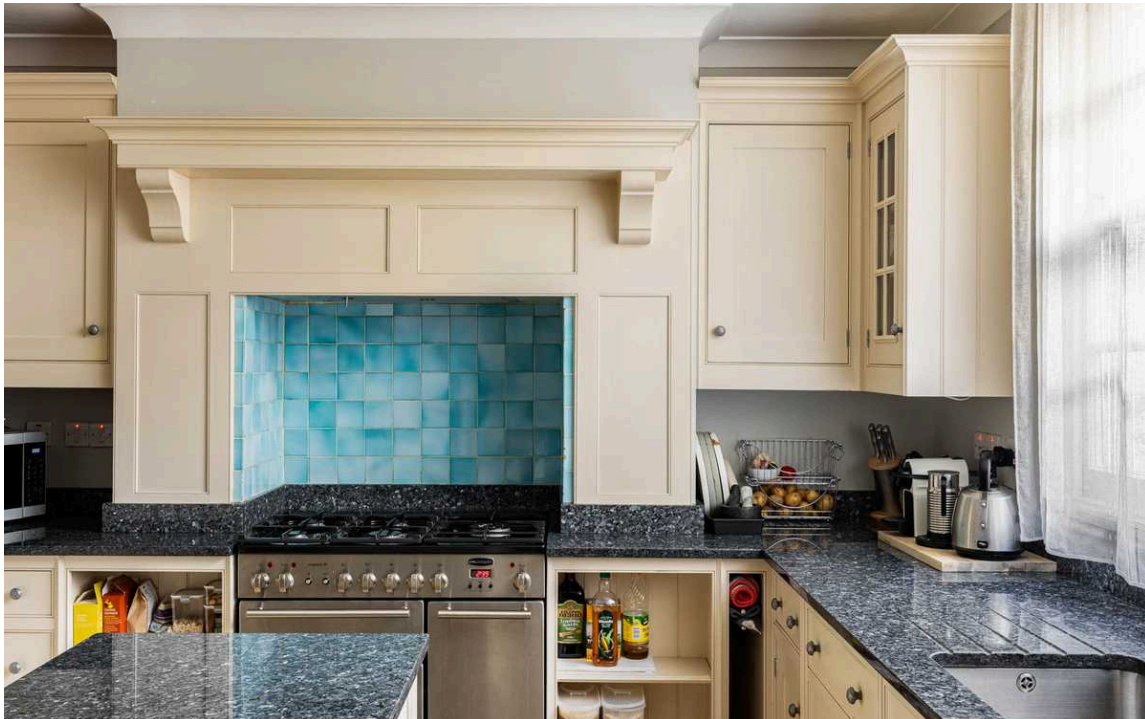
A white stucco family home with elegant and eclectic interiors

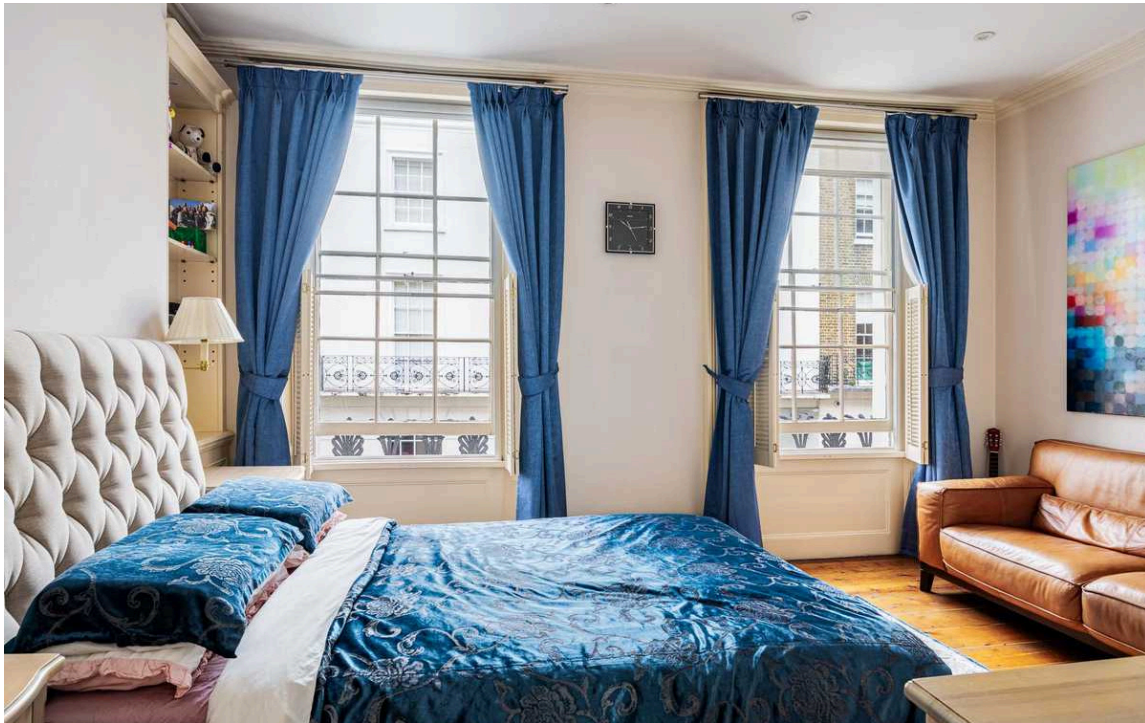
Stepping into the house on the ground floor, the entrance hall leads through to a double reception room, which includes a pair of classical fireplaces, high ceilings and an elegant cornice. At the far end is a morning sitting area with a conservatory-style roof, facing south-west and filling the space with light. Furthermore, this level contains a study with double French doors leading out into the garden.



Indoor Spaces

Downstairs is a well-proportioned kitchen with a central island. It communicates with the dining room, while another set of double French doors open onto the garden. This floor also contains additional storage space and a room with an attached WC that could be used as a gym.





The Bedrooms

The first floor is almost entirely occupied by the principal bedroom suite, made up of bedroom, ensuite bathroom and corridor wardrobe. A room on the half-landing with garden views could be used as either a bedroom or an office. The second floor offers another bedroom with ensuite bathroom, while the half landing gives access to the roof terrace. The third floor features two more bedrooms and a shared bathroom.

img 1

Principal Bedroom





The Design

The property is decorated in a traditional style, to suit the historic setting. Colourful furnishings and patterned wallpaper add to the brightness and charm of the interiors.

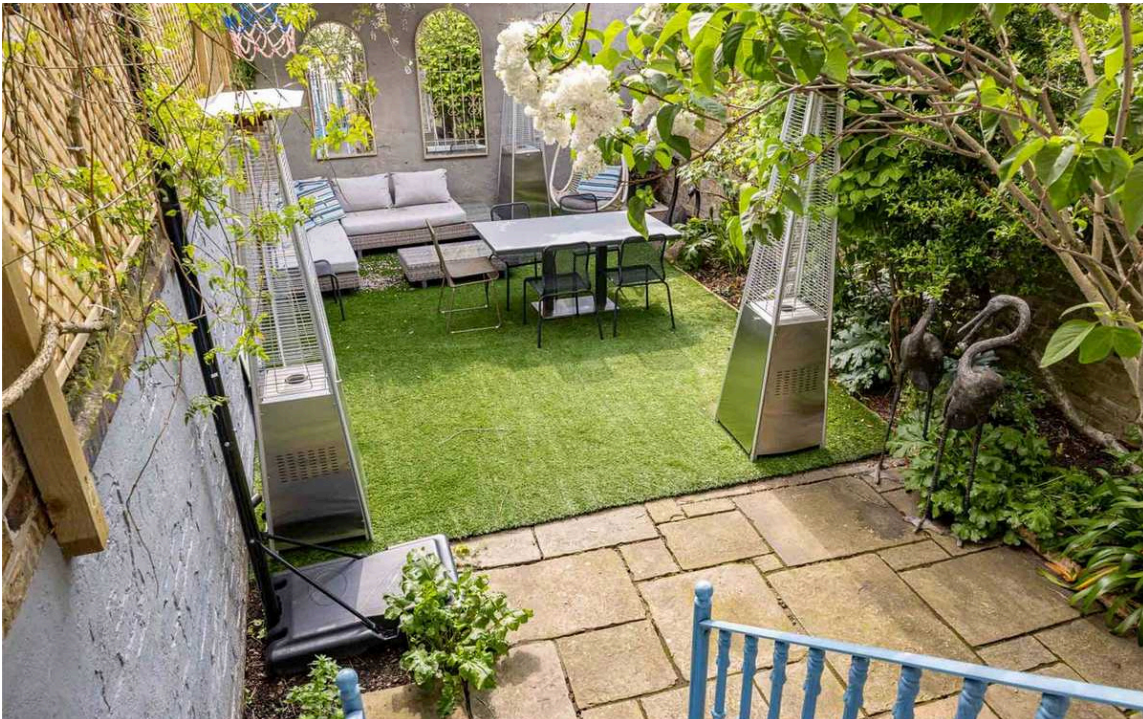


Outdoor Spaces

The property includes a south-west facing garden with paving, planted flowerbeds and enough space for outdoor seating. It also includes a terrace with wooden decking and garden views.

img 1

Balcony





The Neighbourhood

South Eaton Place is an impressive street running south from Eaton Square. It is lined with white stucco terrace houses built in the Victoria era. From here, Sloane Square underground station is a short walk away, while Victoria Station is also close. The restaurants and shops of Chelsea are within easy reach, while nearby Orange Square hosts a popular farmers' market each weekend.

South Eaton Place, SW1

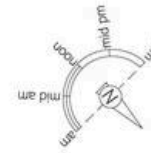
RUSSELL SIMPSON

Approximate Internal Area
2,564 sq ft/ 238 sq m

Including limited use area and vault
g2 sq ft/ 8 sq m

Outside Area
g46 sq ft/ 88 sq m

This plan is for layout guidance only. Not drawn to scale unless stated. Windows and door openings are approximate. Whilst every care is taken in the preparation of this plan, please check all dimensions, shapes, and compass bearings before making any decisions reliant upon them.



**RUSSELL
SIMPSON**

Contact Us

+44 (0) 20 7225 0277

Contact us

info@russellsimpson.co.uk

Sydney Street

+44 (0) 20 7225 0277

151A Sydney Street
London
SW3 6NT

chelsea@russellsimpson.co.uk

Kensington Square

+44 (0) 20 3761 9691

13 Kensington Square
London
W8 5HD

kensington@russellsimpson.co.uk