



## **RUSSELL SIMPSON**

Spacious and sophisticated five-  
bedroom home with south-west  
facing garden

SHALCOMB STREET  
CHELSEA SW10

Shalcomb Street

£3,950,000

BEDROOMS 5	INTERNAL  2,349 SQ FT  218 SQM	OUTDOOR  788 SQ FT	COUNCIL TAX  RBKC, H
BATHROOMS 2		EPC D	TENURE Freehold



## The Property

Light-filled house with contemporary interiors on a quiet and convenient Chelsea street

Entering the house on the ground floor, the front hall opens onto a generous reception room. As well as a broad bay window at the front and double French doors at the rear, this room has an internal balcony overlooking the lower ground floor. Furthermore, a study at the far end of this floor has another pair of French doors giving garden access.

CGI Images have been used.



## Indoor Spaces

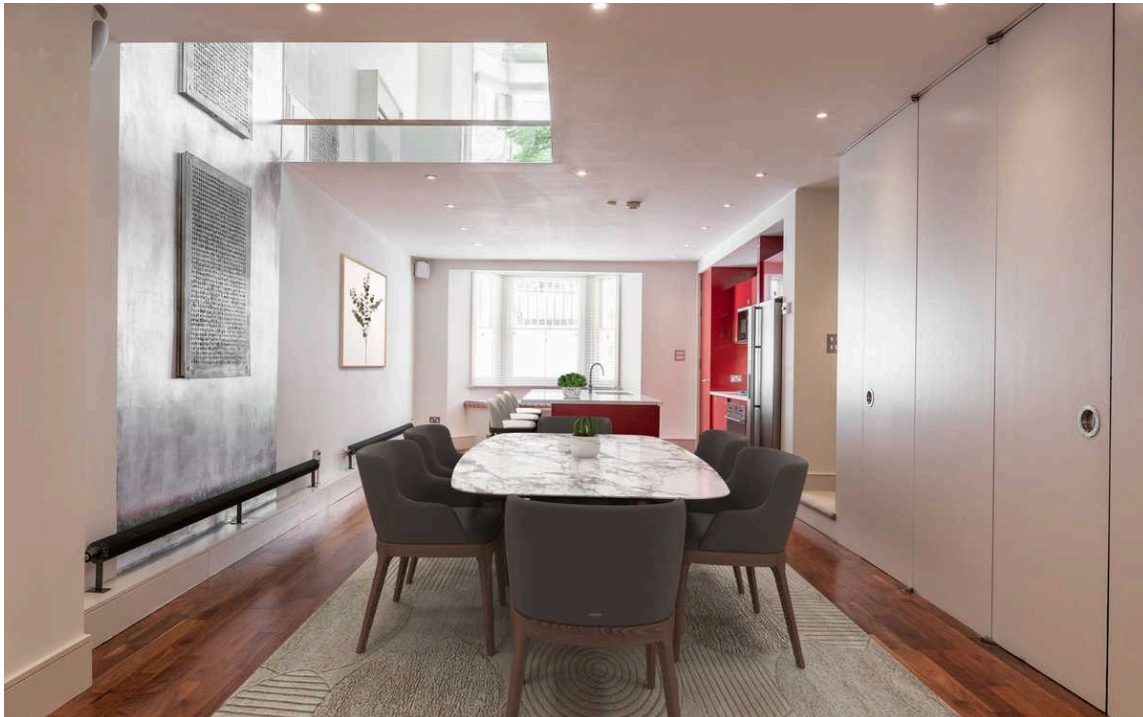
The lower ground floor is entirely occupied by a well-proportioned living space. This includes an open-plan kitchen with a central island, a dining area and an informal family area. Light pours down via the internal balcony, while French doors give access to a patio. This floor also has a guest WC, considerable storage space and separate street access.

img 1

Open Plan Living

img 2

Kitchen







## The Bedrooms

The first floor contains the principal bedroom suite. This includes a bedroom, an ensuite bathroom with a bath, and a dressing room on the half-landing. There are two more bedrooms on the second floor, sharing a bathroom, and a fourth bedroom on the half-landing.

img 1

Principal Bedroom





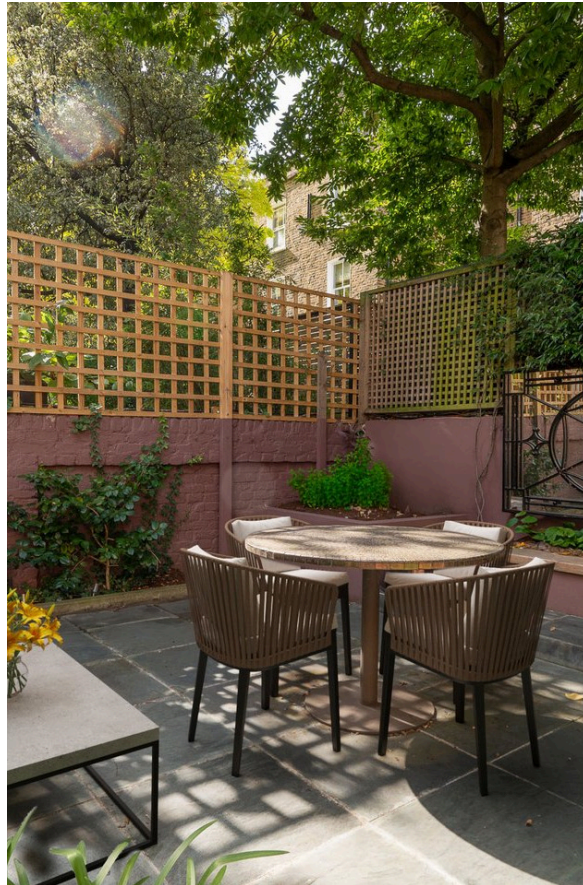
## The Design

The house has been carefully designed to maximise the sense of space and light throughout. Its contemporary interiors are presented in good condition.



## Outdoor Spaces

The property offers a paved south-west facing rear garden. It also offers a ground-floor terrace with wooden decking, and a second-floor terrace with rooftop views.





## The Neighbourhood

Shalcomb Street is a quiet residential road leading off the King's Road. Nearby Langton Street has a handful of charming furniture shops and restaurants, while the various dining and shopping options of Chelsea are within easy reach. The Fulham Road is also nearby, while Fulham Broadway underground station is a short walk away.



# Shalcomb Street, SW10

**Approx. gross Internal Area**  
2349 Sq Ft / 218.24 Sq M

**Approx. outdoor Area**  
788 Sq Ft / 73.3 Sq M

**RUSSELL  
SIMPSON**

This plan is for layout guidance only.  
Not drawn to scale unless stated. Windows  
and door openings are approximate. Whilst  
every care is taken in the preparation of this  
plan, please check all dimensions, shapes,  
and compass bearings before making any  
decisions reliant upon them.



**RUSSELL  
SIMPSON**

---

## Contact Us

+44 (0) 20 7225 0277

151A Sydney Street  
London  
SW3 6NT

[chelsea@russellsimpson.co.uk](mailto:chelsea@russellsimpson.co.uk)

In accordance with the Property Mis-Description Act 1991, the following details have been prepared in good faith, and are not intended to constitute part of an offer or contract. Any information contained herein (whether in the text, plans or photographs) is given in good faith but should not be relied upon as being a statement of representation of fact. Nothing in these Particulars shall be deemed to be a statement that the property is in good condition or otherwise nor that any services or facilities are in good working order. Any measurements of distances referred to herein are approximate only. October 2021