



## **RUSSELL SIMPSON**

Charming house on a centrally  
located Knightsbridge mews

RUTLAND MEWS SOUTH  
KNIGHTSBRIDGE SW7

# Rutland Mews South

# Sold

|                |                       |                     |                    |
|----------------|-----------------------|---------------------|--------------------|
| BEDROOMS<br>1  | INTERNAL<br>683 SQ FT | OUTDOOR<br>67 SQ FT | COUNCIL TAX<br>G   |
| BATHROOMS<br>1 | 63 SQM                | EPC<br>D            | TENURE<br>Freehold |

# The Property

One bedroom house with a top-floor terrace on a beautiful mews street close to the Brompton Road

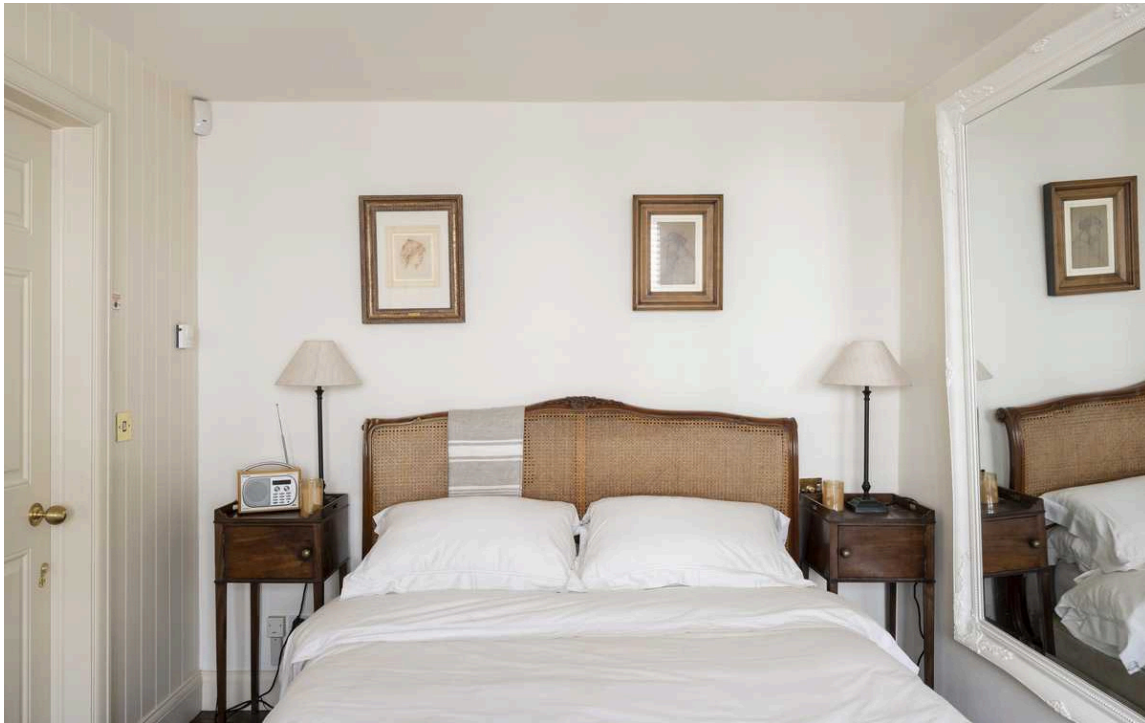


img 1

Kitchen Corner

img 2

Staircase Hall



## Indoor Spaces

Entering the house on the ground floor, a staircase hall opens onto a reception room with high ceilings. Upstairs, the first floor contains a bedroom with inbuilt storage and an ensuite bathroom.

On the second floor is a fitted kitchen with enough space for a separate dining area. In addition, French doors open out onto the terrace and fill this space with light. Finally, the house benefits from wooden floors throughout.





## Outdoor Spaces

The property includes a terrace running the length of the second floor, with enough space for outdoor dining and views down the whole length of the street.



## The Neighbourhood

Rutland Mews South is a cobble street that forms part of the Brompton Conservation Area. The discreet location and sheltered position gives the mews a quiet, village-like atmosphere. That said, the mews is exceptionally well-positioned, midway between the celebrated shops and restaurants of Knightsbridge and the world-class cultural institutions of South Kensington. In addition, Hyde Park and Kensington Gardens are within easy reach.

# Rutland Mews South, SW7

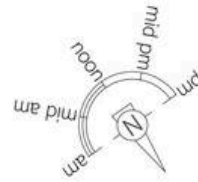
**Approximate area**  
63.5 sq m / 683 sq ft

**Including limited use area**  
(2.2 sq m / 24 sq ft)

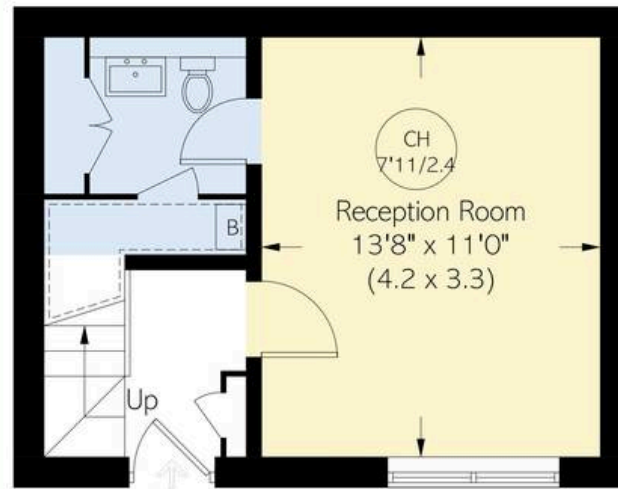
**Approximate external area**  
6.3 sq m / 68 sq ft

## RUSSELL SIMPSON

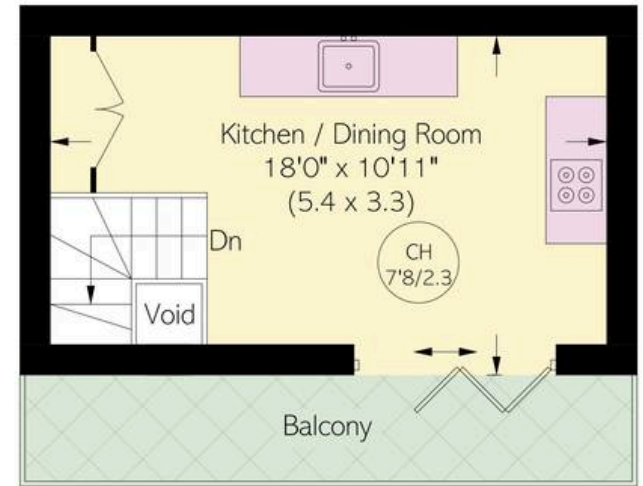
This plan is for layout guidance only. Not drawn to scale unless stated. Windows and door openings are approximate. Whilst every care is taken in the preparation of this plan, please check all dimensions, shapes, and compass bearings before making any decisions reliant upon them.



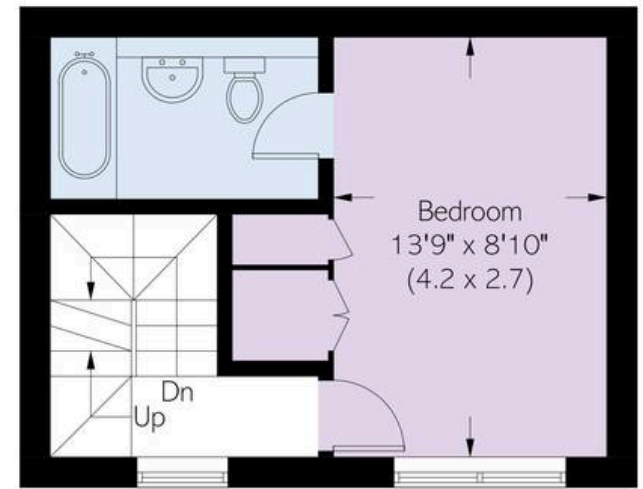
[Dashed box] = Reduced head height below 1.5m



Ground Floor



Second Floor



First Floor

**RUSSELL  
SIMPSON**

---

## Contact Us

+44 (0) 20 7225 0277

Contact us

[info@russellsimpson.co.uk](mailto:info@russellsimpson.co.uk)

---

## Sydney Street

+44 (0) 20 7225 0277

151A Sydney Street  
London  
SW3 6NT

[chelsea@russellsimpson.co.uk](mailto:chelsea@russellsimpson.co.uk)

---

## Kensington Square

+44 (0) 20 3761 9691

13 Kensington Square  
London  
W8 5HD

[kensington@russellsimpson.co.uk](mailto:kensington@russellsimpson.co.uk)