



## **RUSSELL SIMPSON**

Tranquil one-bedroom flat on a  
prestigious Knightsbridge garden  
square

RUTLAND GATE  
KNIGHTSBRIDGE SW7

Rutland Gate

£1,300,000

|                             |                           |                  |                             |
|-----------------------------|---------------------------|------------------|-----------------------------|
| BEDROOMS<br>1               | INTERNAL<br>584 SQ FT     | OUTDOOR<br>—     | COUNCIL<br>Westminster City |
| BATHROOMS<br>1              | 54 SQM                    | EPC<br>E         | COUNCIL TAX<br>F            |
| TENURE<br>Share of freehold | LEASE LENGTH<br>958 YEARS | GROUND RENT<br>— | SERVICE CHARGE<br>—         |

## The Property

Tasteful flat with attractive views on a sought-after square close to Hyde Park

Stepping into the flat on the fourth floor, the front hall leads through to a well-proportioned reception room. As well as space for separate dining and seating areas, it offers beautiful rooftop views towards the Victoria & Albert Museum. Next door is a smart, fitted kitchen.





## Indoor Spaces

The property is decorated in a neutral style, resulting in calm and composed interiors throughout.

The other side of the flat features a bedroom with inbuilt wardrobe space, as well as a bathroom with a bath. There is further storage in the hallway.





## The Neighbourhood

The building is a stucco-fronted townhouse with Italianate decorative details. Residents have the right to access the communal garden.

Rutland Gate is one of the most sought-after addresses in London. A double square of grand terraces built in the early Victorian era, it occupies the site of Rutland House, former home to the Duke of Rutland.

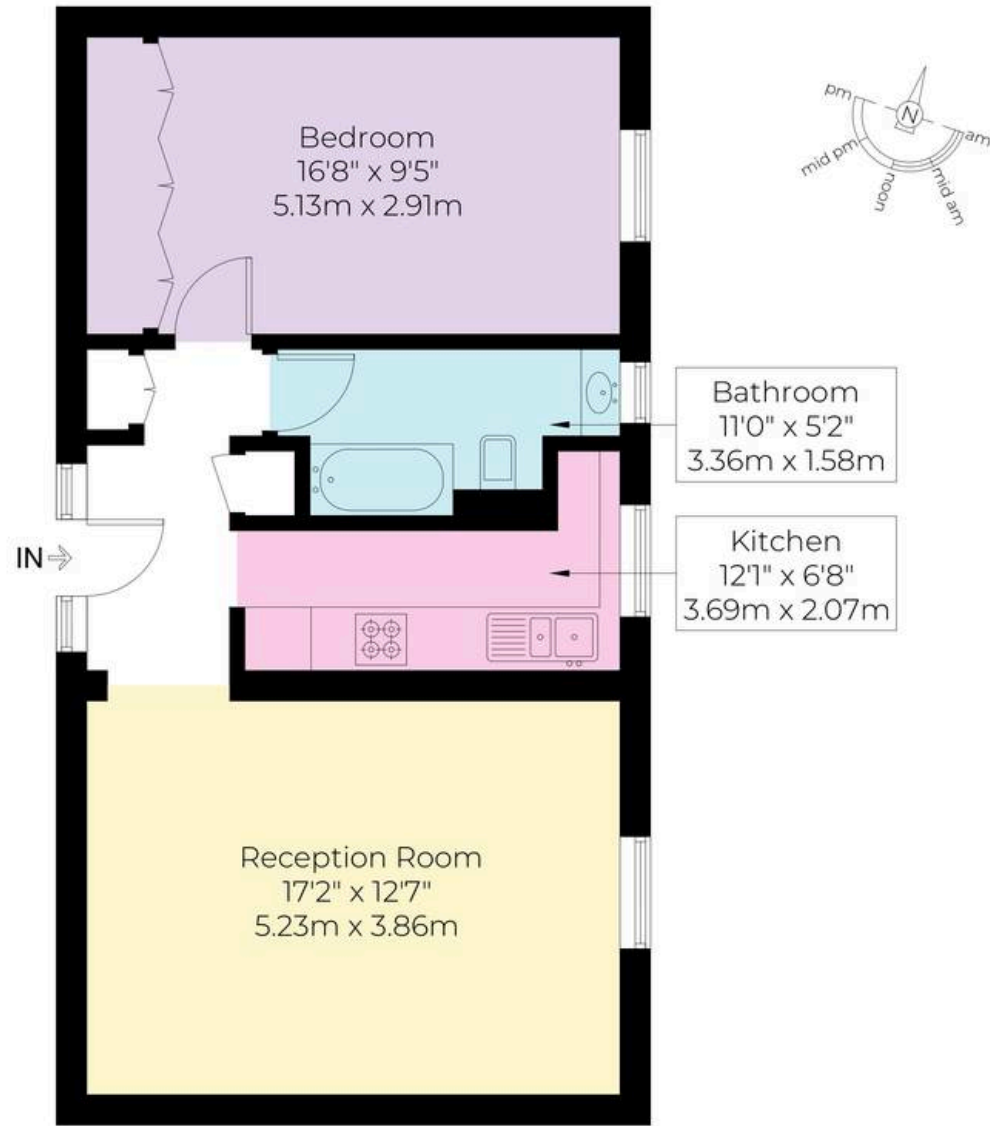
From here, the excellent restaurants and shops of Knightsbridge are a short walk away, as well as the underground station. In addition, the open spaces of Hyde Park and Kensington Gardens are within easy reach. Finally, the world-class cultural venues of South Kensington are close.

# Rutland Gate, SW7

Approx. Gross Internal Area  
54.24 sq m / 584 sq ft

**RUSSELL  
SIMPSON**

This Floor plan is not to scale and measurements and areas shown are approximate and therefore should be used for illustrative purposes only. The plan has been prepared in accordance with the RICS code of Measuring Practice and whilst we have confidence in the information produced it must not be relied on. Maximum lengths and widths are represented on the floor plan. If there is any aspect of particular importance, you should carry out or commission your own inspection of the property.  
Copyright @ BleuPlan



Fourth Floor

**RUSSELL  
SIMPSON**

---

## Contact Us

+44 (0) 20 7225 0277

Contact us

[info@russellsimpson.co.uk](mailto:info@russellsimpson.co.uk)

---

## Sydney Street

+44 (0) 20 7225 0277

151A Sydney Street

London

SW3 6NT

[chelsea@russellsimpson.co.uk](mailto:chelsea@russellsimpson.co.uk)

---

## Kensington Square

+44 (0) 20 3761 9691

13 Kensington Square

London

W8 5HD

[kensington@russellsimpson.co.uk](mailto:kensington@russellsimpson.co.uk)