



RUSSELL SIMPSON

Bright two-bedroom house on a
quiet mews in Holland Park

ROYAL CRESCENT MEWS
HOLLAND PARK W11

Royal Crescent Mews

Sold

| | | | |
|----------------|-----------------------|---------------------|--------------------|
| BEDROOMS 2 | INTERNAL 677 SQ FT | OUTDOOR 35 SQ FT | COUNCIL TAX E |
| BATHROOMS 2 | 62 SQM | EPC D | TENURE Freehold |



The Property

A delightful three-storey mews house on a cobbled street.

With wooden floors throughout, and a restrained décor to maximise the sense of light, this freehold property offers a peaceful refuge in the heart of Central London.

Entertaining Spaces

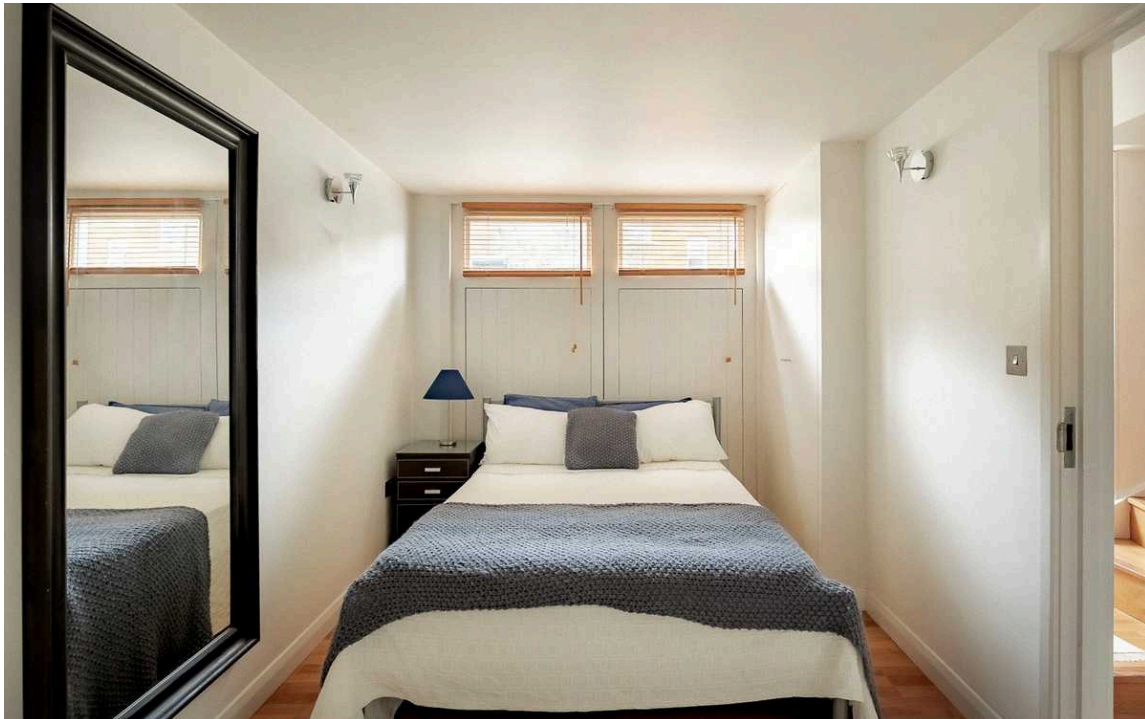
Entering the house on the ground floor, stairs lead to the first floor reception room, a bright and inviting space with French doors opening onto a Juliette balcony. The open plan kitchen is positioned to the rear of this room, allowing for ample space for dining, and features fitted wooden units with granite work surfaces and integrated appliances.





The Bedrooms

The second floor houses the principal bedroom, a substantial room with built in storage and a well-appointed en-suite bathroom. On the ground floor is the second bedroom, another good sized double bedroom with storage, as well as the guest bathroom.



The Neighbourhood

Royal Crescent Mews is a quiet mews in Holland Park, moments away from the open spaces of Hyde Park and the upmarket boutiques of Notting Hill. The location offers superb transport connections with Holland Park Station within easy reach as well as the Overground at Shepherds Bush, providing swift access to central London. The area is distinguished by its elegant white stucco terraces and tree-lined streets, with many excellent restaurants and shops nearby.

Royal Crescent Mews, W11

**RUSSELL
SIMPSON**

Approximate Internal Area

677 sq ft/ 63 sq m

Including limited use area

36 sq ft/ 3 sq m

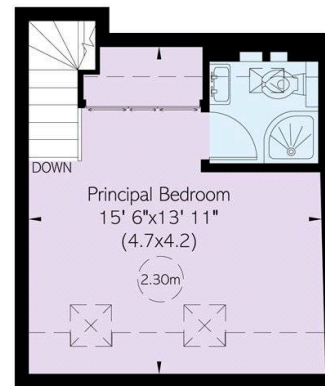
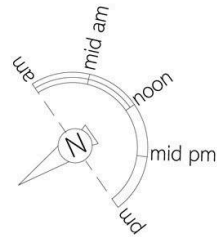
Outside Area

3 sq ft/ 0.2 sq m

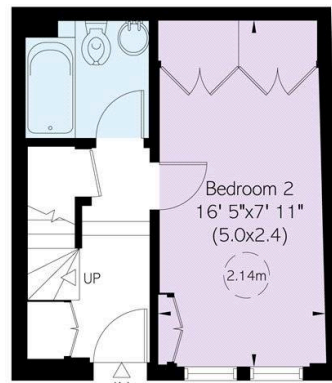
This plan is for layout guidance only. Not drawn to scale unless stated. Windows and door openings are approximate. Whilst every care is taken in the preparation of this plan, please check all dimensions, shapes, and compass bearings before making any decisions reliant upon them.



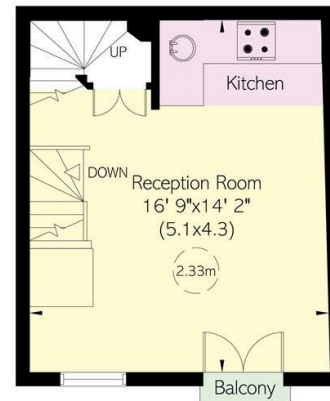
Reduced head height below 1.5m



Second Floor



Ground Floor



First Floor

**RUSSELL
SIMPSON**

Contact Us

+44 (0) 20 3761 9691

13 Kensington Square
London
W8 5HD

kensington@russellsimpson.co.uk