



## **RUSSELL SIMPSON**

Beautifully renovated three-bedroom  
house in the heart of Chelsea

RICHARDS PLACE  
CHELSEA SW3

Richards Place

Sold

BEDROOMS 3	INTERNAL  1,211 SQ FT  112 SQM	OUTDOOR  109 SQ FT	COUNCIL TAX  RBKC, H
BATHROOMS 2		EPC E	TENURE Freehold

# The Property

A delightful three-storey house presented in superb condition

The house has been thoughtfully renovated in a contemporary style, with recessed lighting throughout and a sophisticated neutral palette. Notable features include the abundance of natural light from the carefully positioned windows and the wooden floors seamlessly flowing between living spaces.







## Entertaining Spaces

Entering the house on the ground floor, you step into a generous open-plan kitchen, reception and dining room. The reception area features a comfortable seating arrangement positioned by two large windows, creating a bright living space enhanced by a contemporary fireplace. This area flows through to the kitchen, which features contemporary fitted units with dark cabinetry, white countertops, and an induction cooktop with stainless steel range hood. The kitchen includes a central island with bar seating. Beyond is the dining area, from which crittle doors open out onto the patio garden.





## The Bedrooms

The first floor features two beautifully proportioned bedrooms, each with extensive built-in wardrobes and inbuilt shelving. Both rooms benefit from moulded cornices and recessed lighting. This level also includes a well-appointed family bathroom. On the second floor, the principal bedroom offers generous proportions with built-in storage and an ensuite bathroom.



## The Neighbourhood

Richards Place is a quiet residential address in the heart of Chelsea. This picturesque street is moments away from the King's Road with its upmarket boutiques and many restaurants. The property is within easy reach of Sloane Square station and the open spaces of nearby Chelsea parks, offering the perfect balance of urban sophistication and village charm that defines this most desirable area of London.

# Richards Place, SW3

## Approx Gross Internal Area

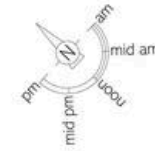
1,273 sq ft / 118.3 sq m

## Including Limited Use Area

62 sq ft / 5.8 sq m

**RUSSELL  
SIMPSON**

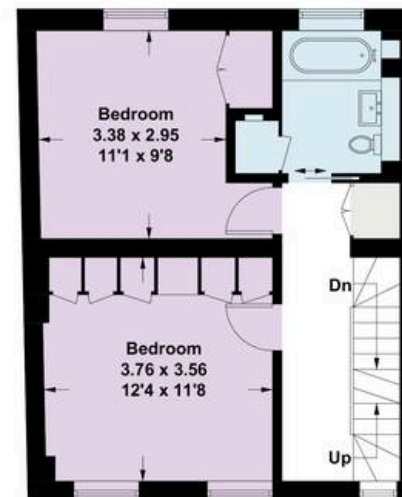
This plan is for layout guidance only. Not drawn to scale unless stated. Windows and door openings are approximate. Whilst every care is taken in the preparation of this plan. Please check all dimensions, shapes, and compass bearings before making any decisions reliant upon them.



□ = Reduced head height below 1.5m



GROUND FLOOR



FIRST FLOOR



SECOND FLOOR

**RUSSELL  
SIMPSON**

---

## Contact Us

+44 (0) 20 7225 0277

151A Sydney Street  
London  
SW3 6NT

[chelsea@russellsimpson.co.uk](mailto:chelsea@russellsimpson.co.uk)

In accordance with the Property Mis-Description Act 1991, the following details have been prepared in good faith, and are not intended to constitute part of an offer or contract. Any information contained herein (whether in the text, plans or photographs) is given in good faith but should not be relied upon as being a statement of representation of fact. Nothing in these Particulars shall be deemed to be a statement that the property is in good condition or otherwise nor that any services or facilities are in good working order. Any measurements of distances referred to herein are approximate only. October 2021