



RUSSELL SIMPSON

Four bedroom family home in
Chelsea with elegant interiors and
large garden

REDESDALE STREET
CHELSEA SW3

Redesdale Street

Sold

BEDROOMS 4	INTERNAL 2,219 SQ FT	OUTDOOR 623 SQ FT	COUNCIL TAX RBKC, H
BATHROOMS 2	206 SQM	EPC D	TENURE Freehold



The Property

Beautifully proportioned house on a quiet street close to the King's Road

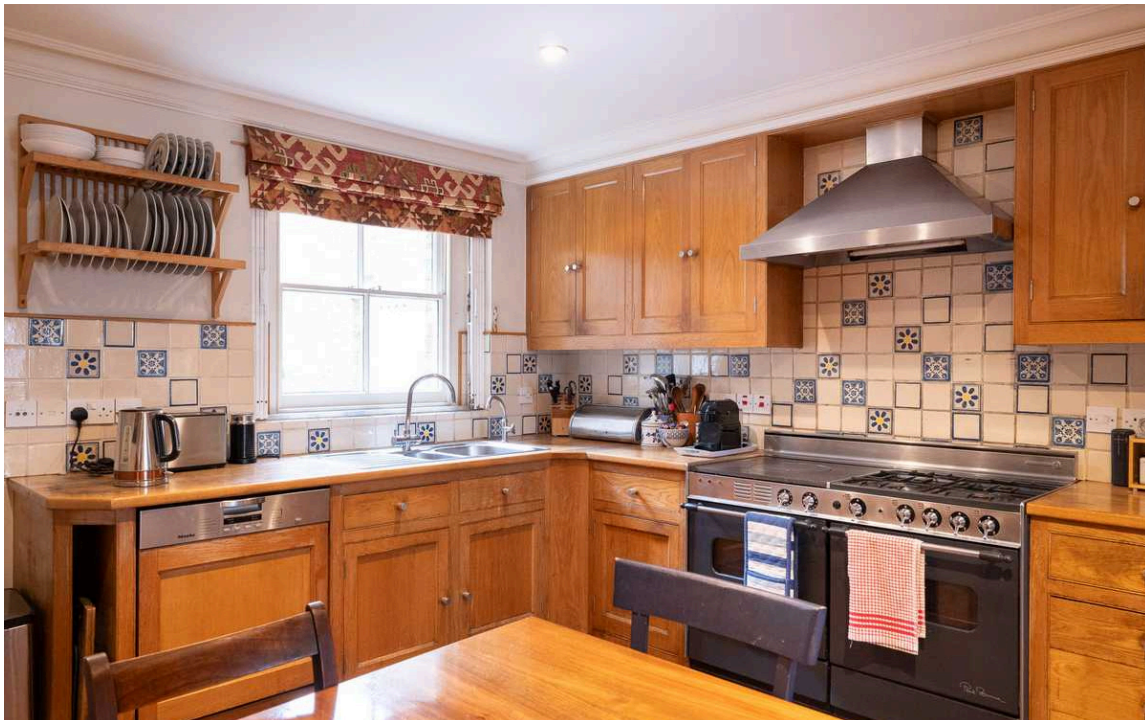
Entering the house on the ground floor, the front hall leads through to a double reception room. High ceilings, a fireplace and a broad bay window give this space a lofty and elegant feel. In addition, this floor contains a study with garden views.



Indoor Spaces

The house is decorated in a tasteful and traditional style, but the with the potential to be extended and updated by new owners.

The lower ground floor consists of a fitted kitchen, benefiting from a high standard of joinery throughout and plenty of storage and a breakfast area that flows through to a formal dining room. This floor also contains a utility room, a guest WC, and a conservatory leading out into the garden. Finally, there is a wine cellar and separate street access via the front patio.





The Bedrooms

The first floor features a principal bedroom with south-facing sash windows and inbuilt storage space. It also contains a well-proportioned bathroom on the half-landing, and an additional bedroom or dressing room. The second floor offers two more bedrooms and another landing bathroom leading out onto a roof terrace.



Outdoor Spaces

The property includes a beautiful and spacious rear garden with a lawn and a paved space for outdoor eating.





The Neighbourhood

Redesdale Street is an attractive road in old Chelsea, lined in terrace houses with stucco bases. From here, the Kings' Road is within easy reach, while Sloane Square station is also close. A new development is soon to open on the Kings' Road, containing a cinema and restaurants. The house is also in close proximity to Chelsea Green, with an excellent Butcher, Greengrocer and Fishmonger. Residents have the right to apply for membership of the impressive sports facilities at nearby Burton Court, as well as the beautiful grounds of the Chelsea Physic Garden.

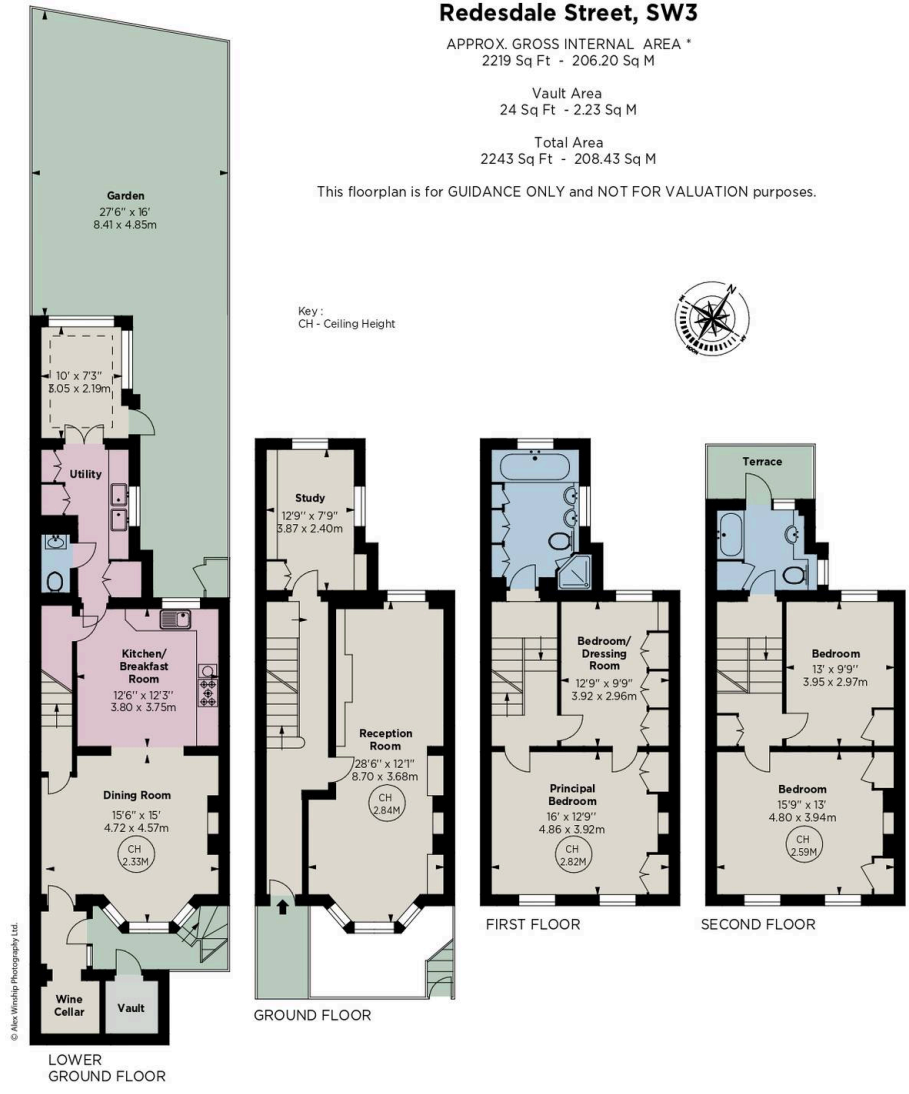
Redesdale Street, SW3

APPROX. GROSS INTERNAL AREA *
2219 Sq Ft - 206.20 Sq M

Vault Area
24 Sq Ft - 2.23 Sq M

Total Area
2243 Sq Ft - 208.43 Sq M

This floorplan is for GUIDANCE ONLY and NOT FOR VALUATION purposes.



**RUSSELL
SIMPSON**

Contact Us

+44 (0) 20 7225 0277

Contact us

info@russellsimpson.co.uk

Sydney Street

+44 (0) 20 7225 0277

151A Sydney Street

London

SW3 6NT

chelsea@russellsimpson.co.uk

Kensington Square

+44 (0) 20 3761 9691

13 Kensington Square

London

W8 5HD

kensington@russellsimpson.co.uk