

## **RUSSELL SIMPSON**

Graceful one-bedroom flat with  
balcony on a prestigious Chelsea  
address

REDCLIFFE SQUARE  
CHELSEA SW10

# Redcliffe Square

£1,000,000

BEDROOMS 1	INTERNAL 670 SQ FT	OUTDOOR —	COUNCIL RBKC
BATHROOMS 1	62 SQM	EPC C	COUNCIL TAX E
TENURE Share of freehold	LEASE LENGTH 954 YEARS	GROUND RENT —	SERVICE CHARGE £3,956 P/Y



## The Property

Beautifully designed flat with high ceilings and bright rooms on a sought-after square in the Boltons Conservation Area

Entering the flat on the second floor, the front hall leads down to an impressive reception room. This includes enough space for separate dining and seating areas, as well as high ceilings, wooden floors and a wide bank of sash windows.

## Indoor Spaces

Thanks to the property's end of terrace position, side windows provide a double aspect and fill the corridor and reception room with light. The stylish contemporary interiors add to the sense of brightness and space and a fitted kitchen and guest WC complete the property.



## The Bedroom

Double doors lead through to an equally spacious bedroom with inbuilt storage space and an ensuite bathroom including a bath. The property includes a balcony with beautiful views towards the garden square.





## The Neighbourhood

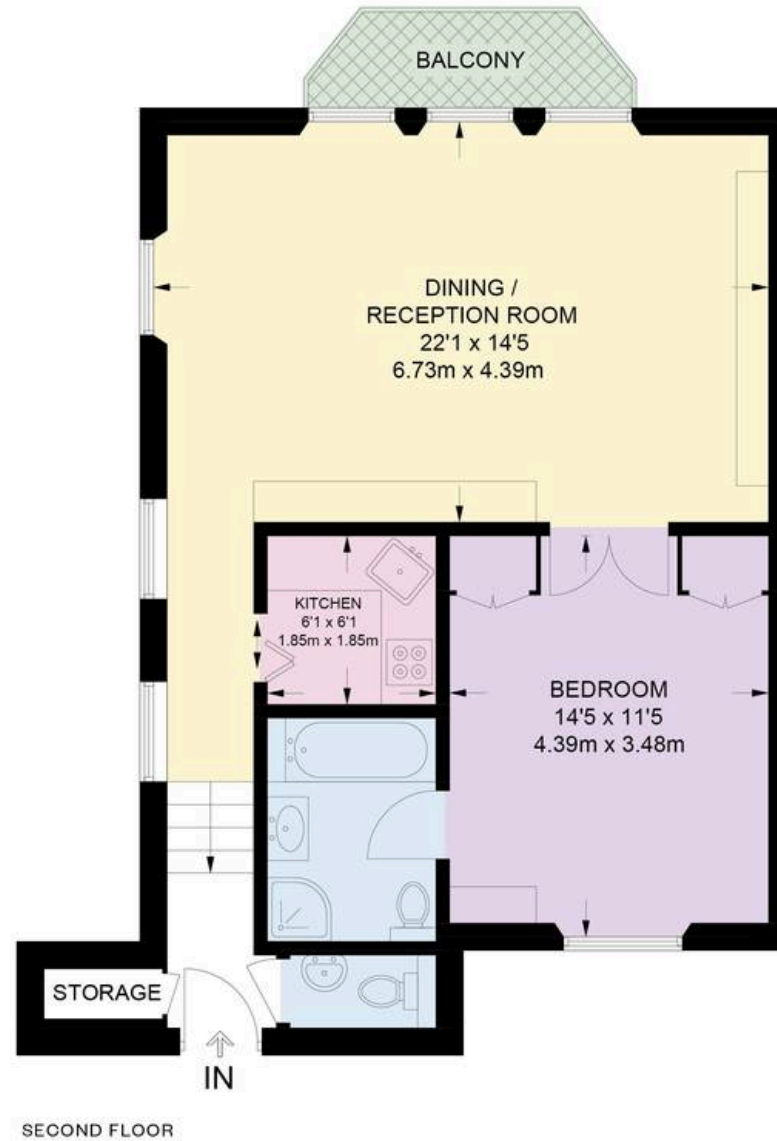
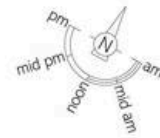
Redcliffe Square was built in the 1860s and lined with grand townhouses. Their mansard roofs and dormer windows evoke the beautiful architecture of Second Empire Paris. It centres on a public garden square and the Victorian church of St Luke's. The square is within easy reach of West Brompton and Earl's Court underground stations, while the restaurants and shops of the Fulham Road are also in walking distance. In addition, Brompton Cemetery is nearby, with its magnificent tombs and avenues of trees.

Redcliffe Square,  
SW10

**Approx Gross Internal Area**  
670 sq ft / 62.3 sq m

**RUSSELL  
SIMPSON**

This plan is for layout guidance only. Not drawn to scale unless stated. Windows and door openings are approximate. Whilst every care is taken in the preparation of this plan. Please check all dimensions, shapes, and compass bearings before making any decisions reliant upon them.



**RUSSELL  
SIMPSON**

---

## Contact Us

+44 (0) 20 7225 0277

Contact us

[info@russellsimpson.co.uk](mailto:info@russellsimpson.co.uk)

---

## Sydney Street

+44 (0) 20 7225 0277

151A Sydney Street

London

SW3 6NT

[chelsea@russellsimpson.co.uk](mailto:chelsea@russellsimpson.co.uk)

---

## Kensington Square

+44 (0) 20 3761 9691

13 Kensington Square

London

W8 5HD

[kensington@russellsimpson.co.uk](mailto:kensington@russellsimpson.co.uk)