



RUSSELL SIMPSON

A bright house in the heart of
kensington.

RADLEY MEWS
KENSINGTON W8

Radley Mews

Sold

BEDROOMS 2-2	INTERNAL 814 SQ FT	OUTDOOR —	COUNCIL TAX G
BATHROOMS 2	75 SQM	EPC D	TENURE Freehold



The Property

A bright and charming mews house occupying 814 square feet across two floors. Radley Mews is in the heart of the desirable Stratford village, in the heart of Kensington.

This beautiful house consists of a bright reception room, a dining room and a separate kitchen, all on the ground floor. On the first floor there is an en-suite principle bedroom, a second double bedroom and a family bathroom.



Details



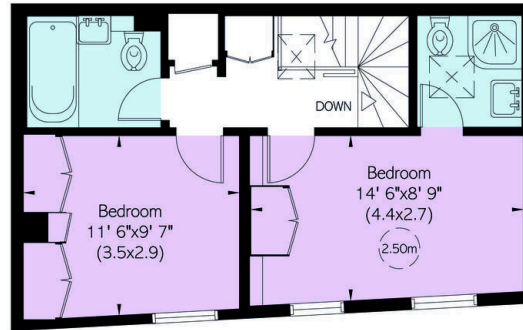
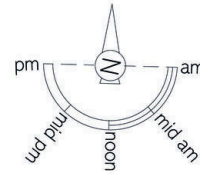


The Neighbourhood

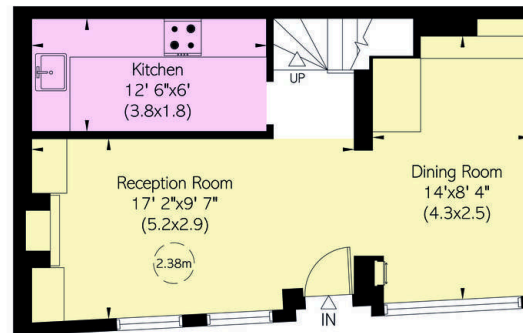
Radley Mews is conveniently located close to High Street Kensington and Earls Court, benefitting from excellent transport links, restaurants, cafes and shops. The green open spaces of Kensington Gardens and Holland Park are also nearby.

RADLEY MEWS, W8

Approximate Area = 814 sq ft/ 76 sq m



First Floor



Ground Floor

<p>VIEWING ARRANGEMENTS</p> <p>Telephone: +44 (0) 202 7225 0277 Email: info@russellsimpson.co.uk</p> <p><small>This plan is for your guidance only. You should make your own visit. Windows and door openings are approximate. While every care is taken in the preparation of this plan, please check all dimensions, floor and ceiling heights before making any decisions to purchase here.</small></p>	<p>RUSSELL SIMPSON</p>
--	-----------------------------------

**RUSSELL
SIMPSON**

Contact Us

+44 (0) 20 7225 0277

Contact us

info@russellsimpson.co.uk

Sydney Street

+44 (0) 20 7225 0277

151A Sydney Street

London

SW3 6NT

chelsea@russellsimpson.co.uk

Kensington Square

+44 (0) 20 3761 9691

13 Kensington Square

London

W8 5HD

kensington@russellsimpson.co.uk