



## **RUSSELL SIMPSON**

Two-bedroom lateral flat in an  
impressive townhouse close to Hyde  
Park

QUEEN'S GATE TERRACE  
SOUTH KENSINGTON SW7

# Queen's Gate Terrace

£2,650,000

BEDROOMS 2	INTERNAL 1,768 SQ FT	OUTDOOR —	COUNCIL RBKC
BATHROOMS 2	164 SQM	EPC C	COUNCIL TAX G
TENURE Leasehold	LEASE LENGTH 974 YEARS	GROUND RENT —	SERVICE CHARGE £9,182 P/Y



## The Property

Stylish South Kensington flat in a grand, Grade II listed stucco terrace, with a porter and lift





## Indoor Spaces

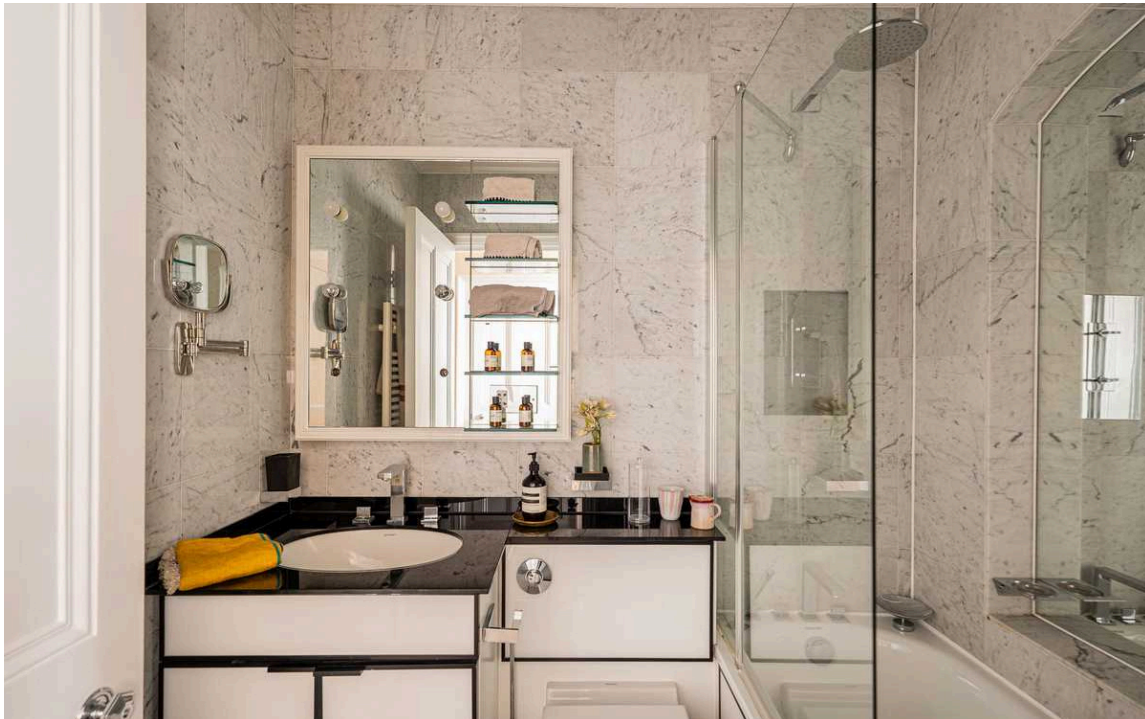
Entering the flat on the fourth floor, the front door opens onto a central hallway. On one side is a generous reception room with a suite of sash windows and rooftop views. Next door is an open-plan kitchen with a breakfast bar and dining area.





## The Bedrooms

The other side of the flat features a pair of well-proportioned bedrooms with inbuilt storage space, south-facing windows and a pair of bathrooms. One of these bedroom and bathrooms forms a private suite, with a staircase beyond leading to the study.







## The Design



## The Neighbourhood

The building benefits from an impressive entrance hall with porter and lift.

Queen's Gate Terrace is a street of impressive Italianate architecture. Its terraces of white stucco townhouses were built in the mid-Victorian era and now contain several embassies. From here, Gloucester Road underground station is a short walk away. In addition, the open spaces of Kensington Gardens and Hyde Park are within easy reach, while the world-class cultural institutions of South Kensington are also nearby.

# Queen's Gate Terrace, SW7

**RUSSELL  
SIMPSON**

Approximate Internal Area  
1,768 sq ft / 164 sq m

This plan is for layout guidance only. Not drawn to scale unless stated. Windows and door openings are approximate. Whilst every care is taken in the preparation of this plan, please check all dimensions, shapes, and compass bearings before making any decisions reliant upon them.



Fourth Floor



**RUSSELL  
SIMPSON**

---

## Contact Us

+44 (0) 20 7225 0277

Contact us

[info@russellsimpson.co.uk](mailto:info@russellsimpson.co.uk)

---

## Sydney Street

+44 (0) 20 7225 0277

151A Sydney Street  
London  
SW3 6NT

[chelsea@russellsimpson.co.uk](mailto:chelsea@russellsimpson.co.uk)

---

## Kensington Square

+44 (0) 20 3761 9691

13 Kensington Square  
London  
W8 5HD

[kensington@russellsimpson.co.uk](mailto:kensington@russellsimpson.co.uk)