



## **RUSSELL SIMPSON**

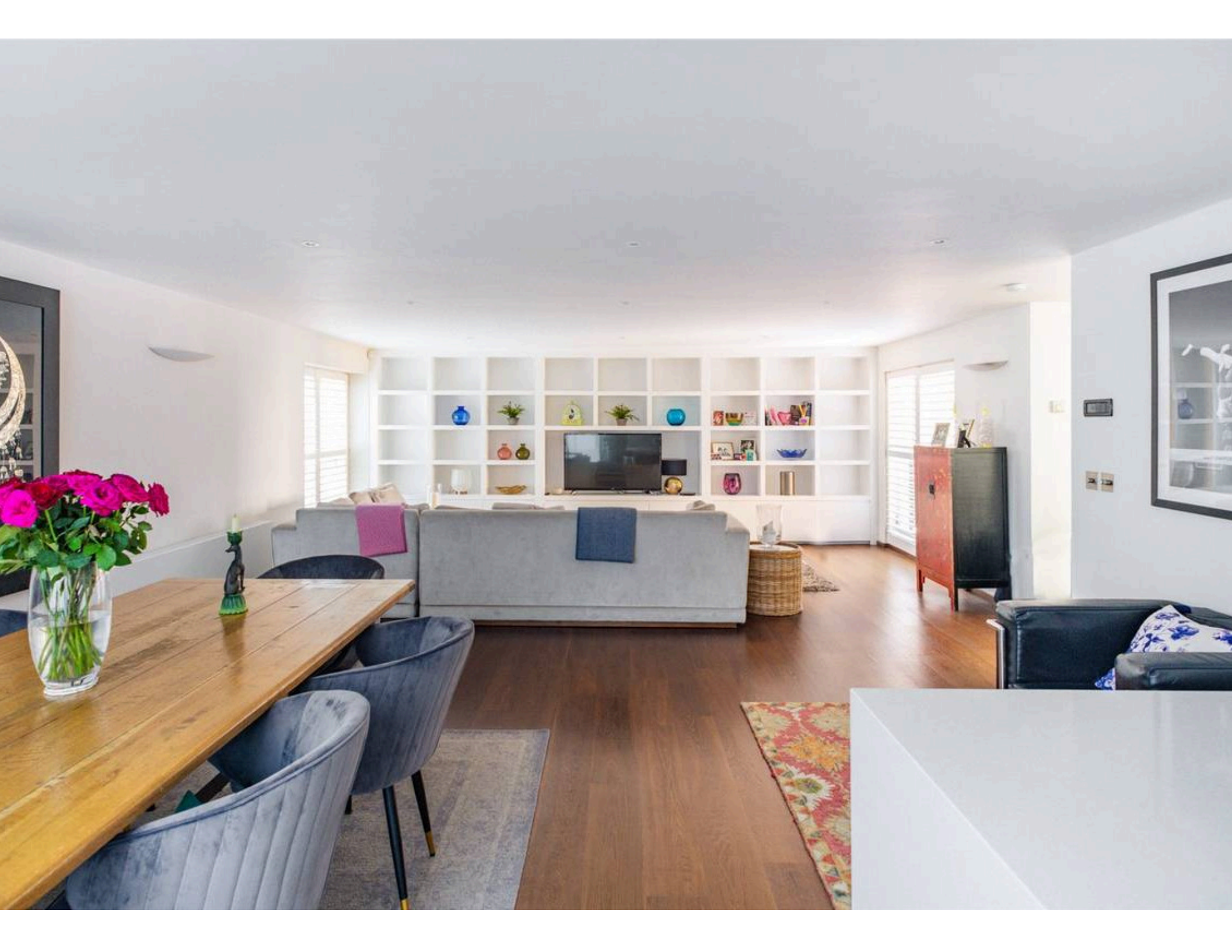
Sophisticated two-bedroom  
maisonette on a popular and private  
mews

QUEEN'S GATE PLACE MEWS  
SOUTH KENSINGTON SW7

# Queen's Gate Place Mews

£2,100,000

BEDROOMS 2	INTERNAL 1,552 SQ FT	OUTDOOR —	COUNCIL RBKC
BATHROOMS 2	144 SQM	EPC D	COUNCIL TAX G
TENURE Share of freehold	LEASE LENGTH 988 YEARS	GROUND RENT —	SERVICE CHARGE —



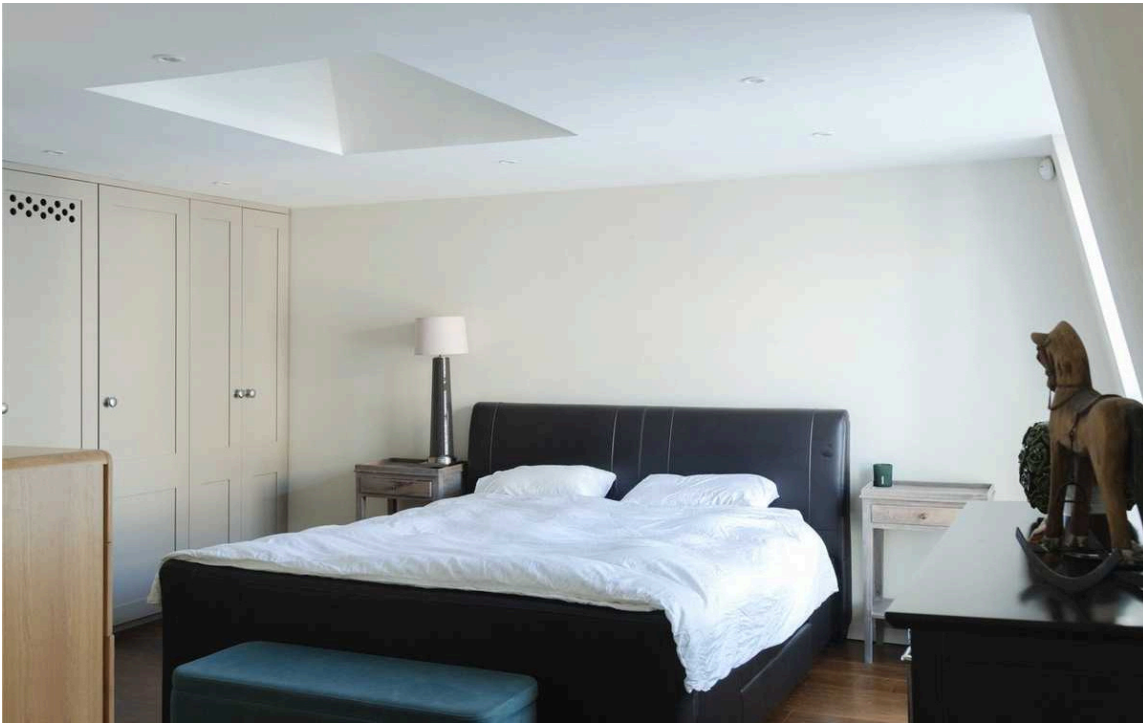
## The Property

Bright and spacious duplex flat with contemporary interiors

Hidden in this quiet mews, a staircase leads up to the flat via a shared entrance. The first floor is entirely occupied by a generous reception room, with enough space for separate dining and seating areas. It also offers a fitted open-plan kitchen, with wooden floors and floor-to-ceiling windows adding to the sense of light and space throughout.







## Indoor Spaces

The second floor features a principal bedroom with an ensuite bathroom and inbuilt storage space. It also features a second double bedroom with a bathroom next door. Overhead skylights bring added illumination into this space, while the contemporary design makes for bright and calm interiors.

---

img 1

Principal Bedroom

img 2

---

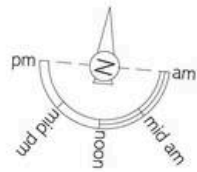
Principal Ensuite



## The Neighbourhood

Queen's Gate Place Mews is a cobbled mews entered via a beautiful classical arch. Its two- and three-storey properties are painted in a mix of colours, creating a village-like sense of charm. From here, Gloucester Road underground station is a short walk away, while the open spaces of Kensington Gardens and Hyde Park are also within easy reach. The world-class cultural institutions of South Kensington are also nearby.





# Queen's Gate Place Mews, SW7 **RUSSELL SIMPSON**

**Approximate Internal Area**  
 1,552 sq ft / 144 sq m  
**Including limited use area**  
 39 sq ft / 4 sq m

This plan is for layout guidance only. Not drawn to scale unless stated. Windows and door openings are approximate. Whilst every care is taken in the preparation of this plan, please check all dimensions, shapes, and compass bearings before making any decisions reliant upon them.



**RUSSELL  
SIMPSON**

---

## Contact Us

+44 (0) 20 7225 0277

Contact us

[info@russellsimpson.co.uk](mailto:info@russellsimpson.co.uk)

---

## Sydney Street

+44 (0) 20 7225 0277

151A Sydney Street

London

SW3 6NT

[chelsea@russellsimpson.co.uk](mailto:chelsea@russellsimpson.co.uk)

---

## Kensington Square

+44 (0) 20 3761 9691

13 Kensington Square

London

W8 5HD

[kensington@russellsimpson.co.uk](mailto:kensington@russellsimpson.co.uk)