

RUSSELL SIMPSON

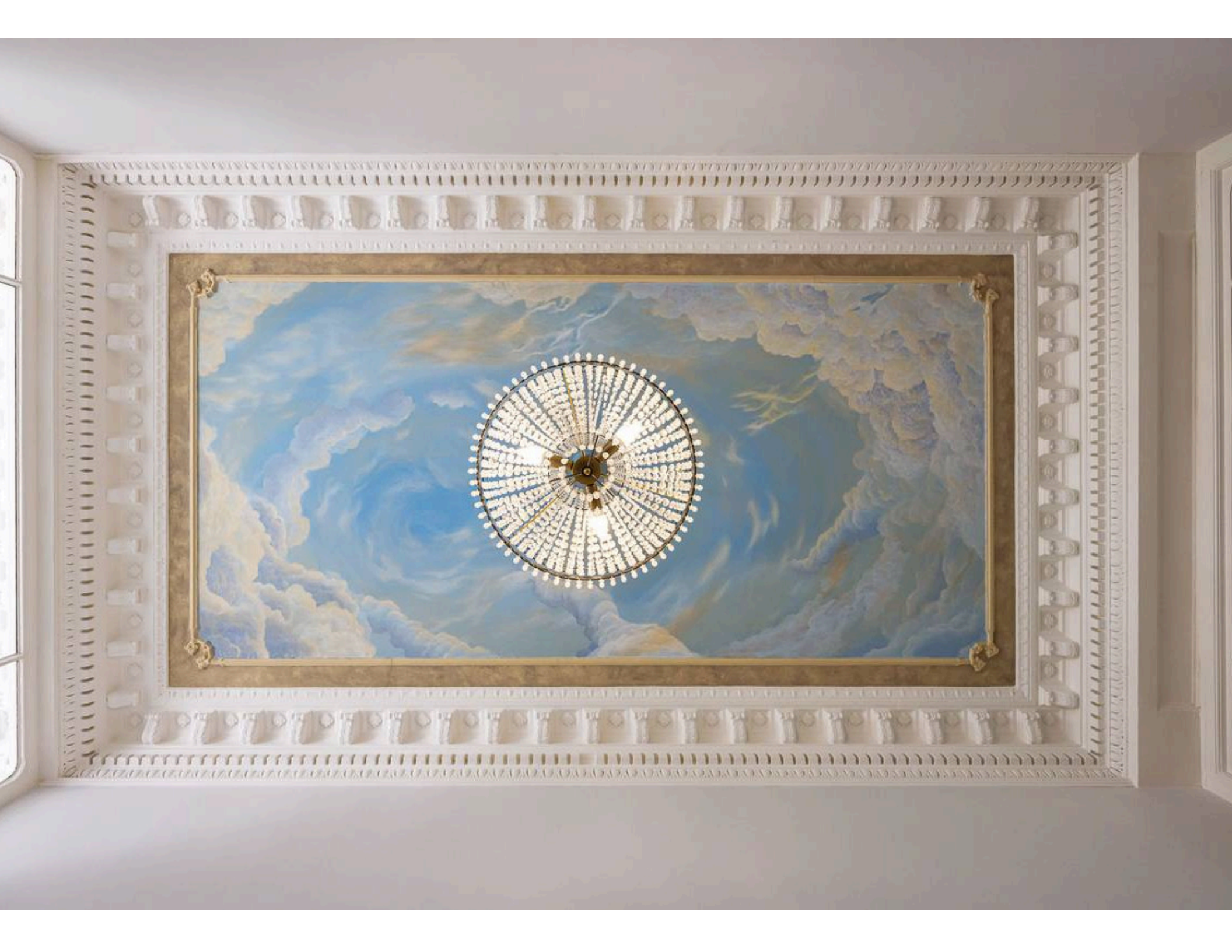
A stunning Grade II raised ground
floor lateral flat

QUEEN'S GATE GARDENS
SOUTH KENSINGTON SW7

Queen's Gate Gardens

Sold

BEDROOMS 3	INTERNAL 3,135 SQ FT	OUTDOOR —	COUNCIL —
BATHROOMS 4	291 SQM	EPC D	COUNCIL TAX H
TENURE Leasehold	LEASE LENGTH 955 YEARS	GROUND RENT —	SERVICE CHARGE £8,364 P/Y



The Property

The property has a magnificent drawing room with approximately a 3.9 metre ceiling height. The flat occupies a beautiful central position facing west on this beautiful garden square, with access to communal gardens and its own private entrance into an exceptional entrance hall.

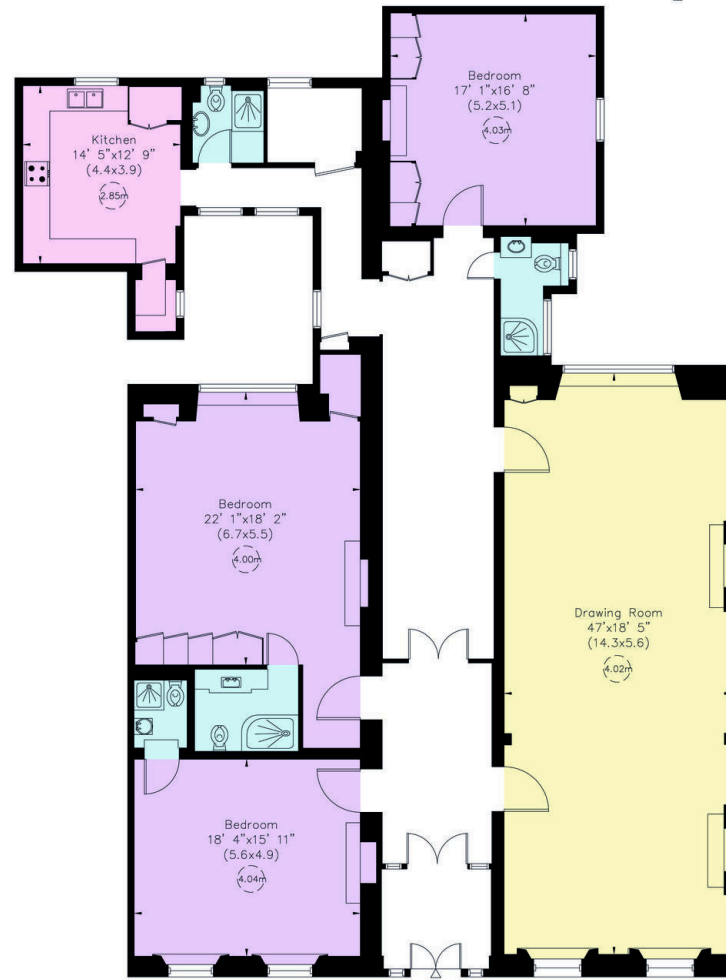
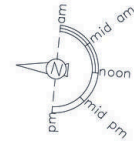




The Neighbourhood

The property is perfectly positioned in the heart of South Kensington for conveniences such as Gloucester Road (District and Circle Lines) and South Kensington (District, Circle and Piccadilly Lines) tube stations, High Street Kensington, Hyde Park and a selection of shops, bars and restaurants.

QUEENS GATE GARDENS, SW7
 Approximate Area = 3135 sq ft/ 291 sq m



Ground Floor

<p>VIEWING ARRANGEMENTS</p> <p>Telephone: +44 (0) 20 7225 0277 Email: info@russellsimpson.co.uk</p> <p><small>This plan is for illustrative purposes only. Any errors in scale or dimensions. Bedrooms and other openings are approximate and may vary slightly from the actual property. Please check all dimensions, areas and volume before making any decisions on the property.</small></p>	<p>RUSSELL SIMPSON</p>
---	--

**RUSSELL
SIMPSON**

Contact Us

+44 (0) 20 7225 0277

Contact us

info@russellsimpson.co.uk

Sydney Street

+44 (0) 20 7225 0277

151A Sydney Street

London

SW3 6NT

chelsea@russellsimpson.co.uk

Kensington Square

+44 (0) 20 3761 9691

13 Kensington Square

London

W8 5HD

kensington@russellsimpson.co.uk