



RUSSELL SIMPSON

Positioned in a quiet cobbled mews
this property presents a newly
developed 2 bedroom home.

PRINCES MEWS
EAST NOTTING HILL & BAYSWATER W2

Princes Mews

Sold

BEDROOMS 2	INTERNAL 1,290 SQ FT	OUTDOOR —	COUNCIL TAX ENB, G
BATHROOMS 3	119 SQM	EPC C	TENURE Freehold



The Property

Designed by award winning architect Neil Tomlinson, the house has two floors of versatile living space, outstanding light and proportions.



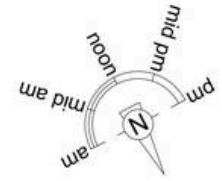


The Neighbourhood

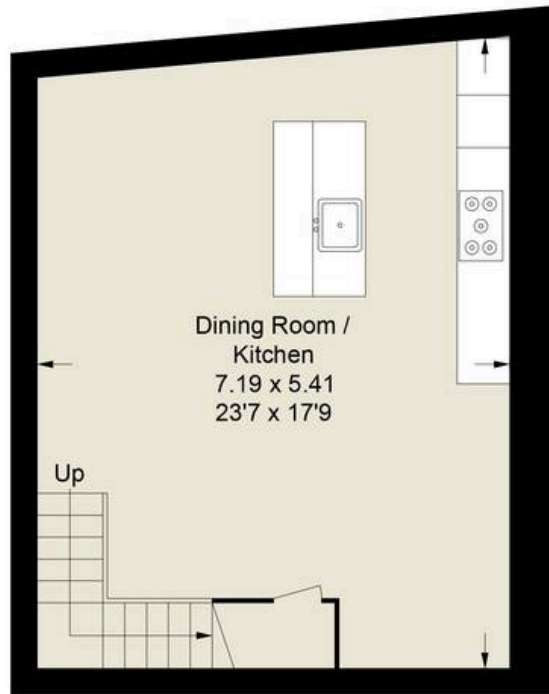
The mews is positioned within close proximity to Kensington Palace Gardens, Notting Hill Gate and a short walk from the hubbub of Westbourne Grove and the world famous Portobello Road.

Princes Mews, W2

Approximate Area = 1290 sq ft / 119.8 sq m
(Excluding Light Well)



= Reduced head height below 1.5m



Lower Ground Floor



Ground Floor



First Floor

This plan is for layout guidance only. Not drawn to scale unless stated. Windows and door openings are approximate. Whilst every care is taken in the preparation of this plan, please check all dimensions, shapes and compass bearings before making any decisions reliant upon them. (ID720809)

**RUSSELL
SIMPSON**

Contact Us

+44 (0) 20 7225 0277

Contact us

info@russellsimpson.co.uk

Sydney Street

+44 (0) 20 7225 0277

151A Sydney Street

London

SW3 6NT

chelsea@russellsimpson.co.uk

Kensington Square

+44 (0) 20 3761 9691

13 Kensington Square

London

W8 5HD

kensington@russellsimpson.co.uk