

RUSSELL SIMPSON

Serene three-bedroom flat with
south-west facing terrace
overlooking Holland Park

PLANE TREE HOUSE
KENSINGTON W8

Plane Tree House

£2,750,000

<div>BEDROOMS</div> <div>3</div>	<div>INTERNAL</div> <div>1,370 <small>SQ FT</small></div> <div>127 <small>SQM</small></div>	<div>OUTDOOR</div> <div>132 <small>SQ FT</small></div>	<div>COUNCIL</div> <div>RBKC</div>
<div>BATHROOMS</div> <div>2</div>		<div>EPC</div> <div>C</div>	<div>COUNCIL TAX</div> <div>H</div>
<div>TENURE</div> <div>Leasehold</div>	<div>LEASE LENGTH</div> <div>982 <small>YEARS</small></div>	<div>GROUND RENT</div> <div>—</div>	<div>SERVICE CHARGE</div> <div>£8,674 <small>P/Y</small></div>



The Property

Light-filled flat with quadruple aspect in an exceptionally well-located modern building

The flat has windows on every side, resulting in luminous rooms and beautiful views. The interiors combine a contemporary style with charming rustic details to create a sense of comfort and warmth.



Indoor Spaces

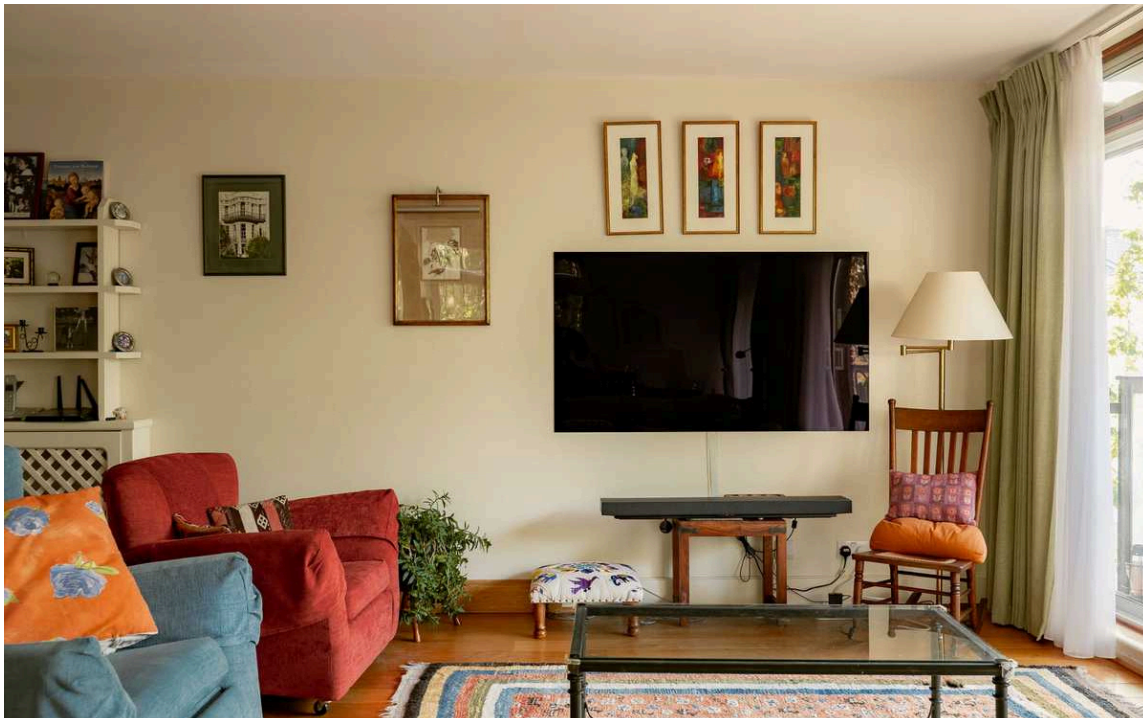
Entering the flat on the third floor, the front hall leads through to a well-proportioned reception room. This includes a dining area, a seating area and sliding French doors opening onto the terrace. It also flows through to a fitted kitchen.

img 1

Dining

img 2

Reception Room

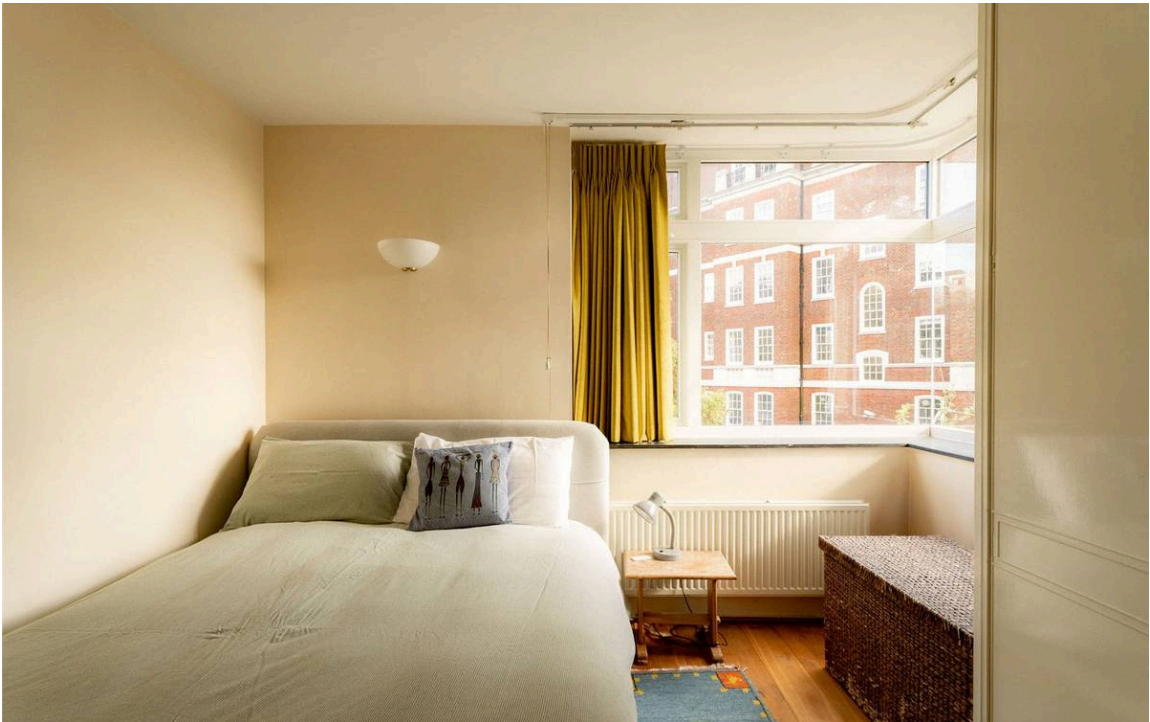




The Bedrooms

The flat contains three bedrooms. The principal bedroom has an ensuite bathroom with a bath, considerable storage space and a wide corner window. The other two bedrooms share a bathroom, while the hallways contains a guest WC and further storage space.

img 1	Principal Bedroom
img 2	Second Bedroom





Outdoor Spaces

The property includes a south-west facing terrace with beautiful views over Holland Park. In addition, the building has a lift, a porter and underground parking for two cars.



The Neighbourhood

Plane Tree House is an award-winning block of flats from the 1960s. The building is exceptionally well-located to the north of Duchess of Bedford Walk, with light-filled flats overlooking Holland Park. From here, Kensington High Street is close, with its restaurants, shops and underground station.

Plane Tree House, W8

**RUSSELL
SIMPSON**

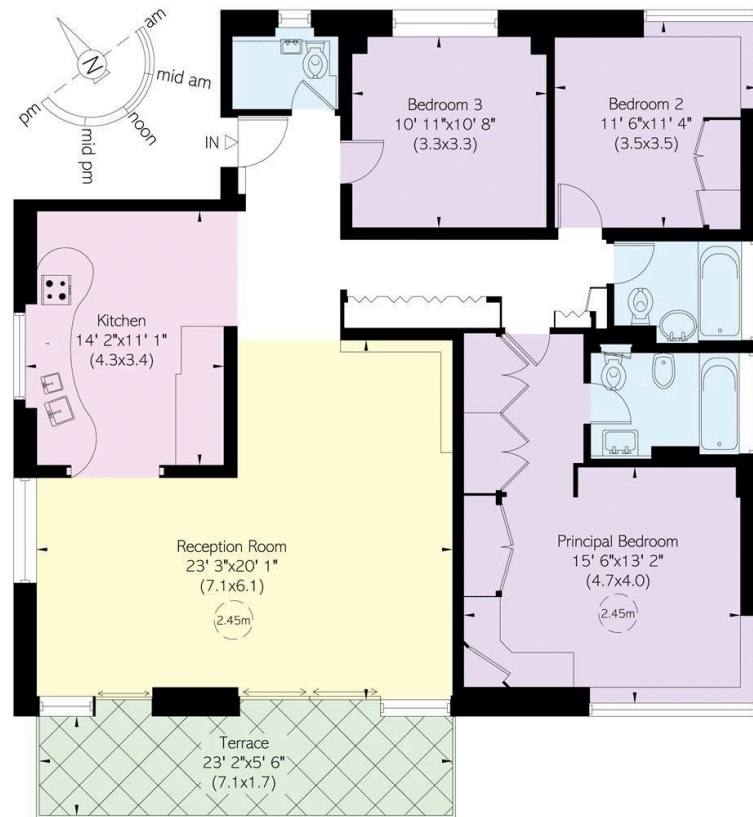
Approximate Internal Area

1,370 sq ft/ 127 sq m

Outside Area

133 sq ft/ 12 sq m

This plan is for layout guidance only. Not drawn to scale unless stated. Windows and door openings are approximate. Whilst every care is taken in the preparation of this plan, please check all dimensions, shapes, and compass bearings before making any decisions reliant upon them.



Third Floor

**RUSSELL
SIMPSON**

Contact Us

+44 (0) 20 3761 9691

13 Kensington Square
London
W8 5HD

kensington@russellsimpson.co.uk