



## **RUSSELL SIMPSON**

Glorious two-bedroom flat in a  
prestigious Kensington mansion  
block

PALACE PLACE MANSIONS  
KENSINGTON W8

Palace Place Mansions

£1,950,000

BEDROOMS 2	INTERNAL  1,119 SQ FT  103 SQM	OUTDOOR  —	COUNCIL  RBKC
BATHROOMS 2		EPC  D	COUNCIL TAX  G
TENURE Share of freehold	LEASE LENGTH 973 YEARS	GROUND RENT  —	SERVICE CHARGE £6,500 P/Y

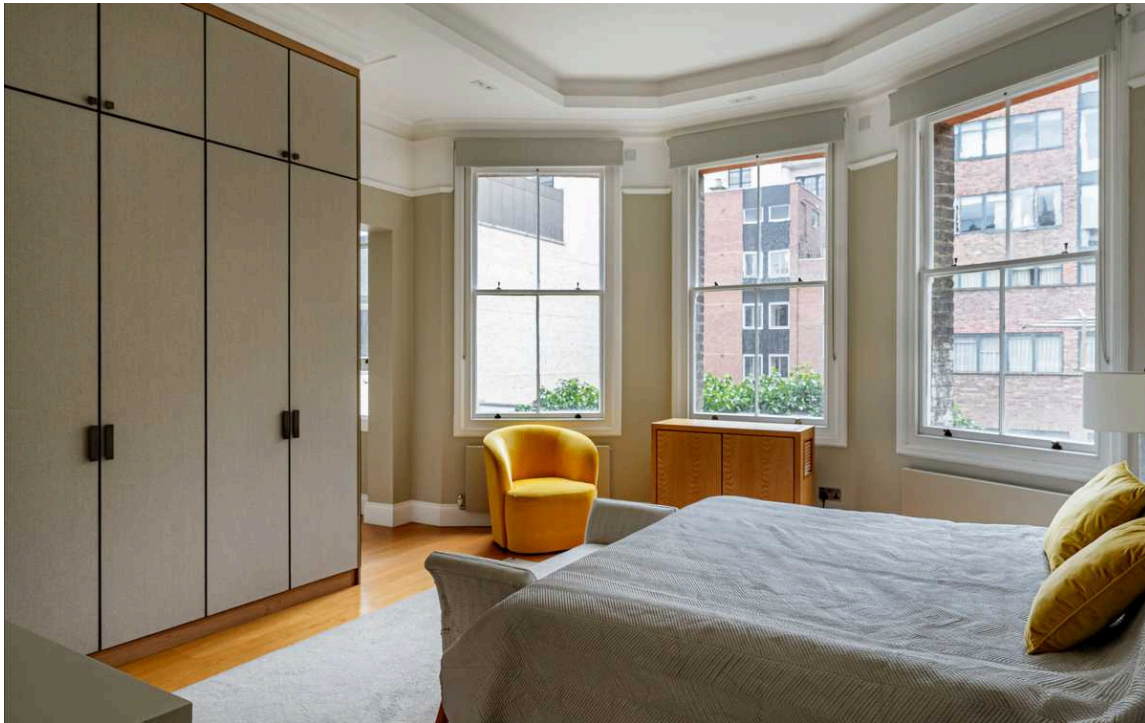
# The Property



Beautifully designed flat with bright and spacious interiors close to Kensington High Street

Entering the flat on the first floor, the front hall flows through to a generous reception room. As well as a west-facing bay window bringing light into the room, there is enough space for separate dining and seating areas. Opposite, is a convenient kitchen fitted with modern appliances.

The interiors are decorated in a restrained fashion, giving a calm contemporary feel to the flat.



## The Bedrooms

The other side of the flat contains a pair of bedrooms. The principal bedroom has an elegant ensuite bathroom, a walk-in wardrobe and its own bay window. The second bedroom is also ensuite.







## The Neighbourhood

Palace Place Mansions is a grand red-brick mansion block with a lift. Dating from the Victorian Era, it opens onto a quiet, pedestrianised walkway leading to Kensington High Street.

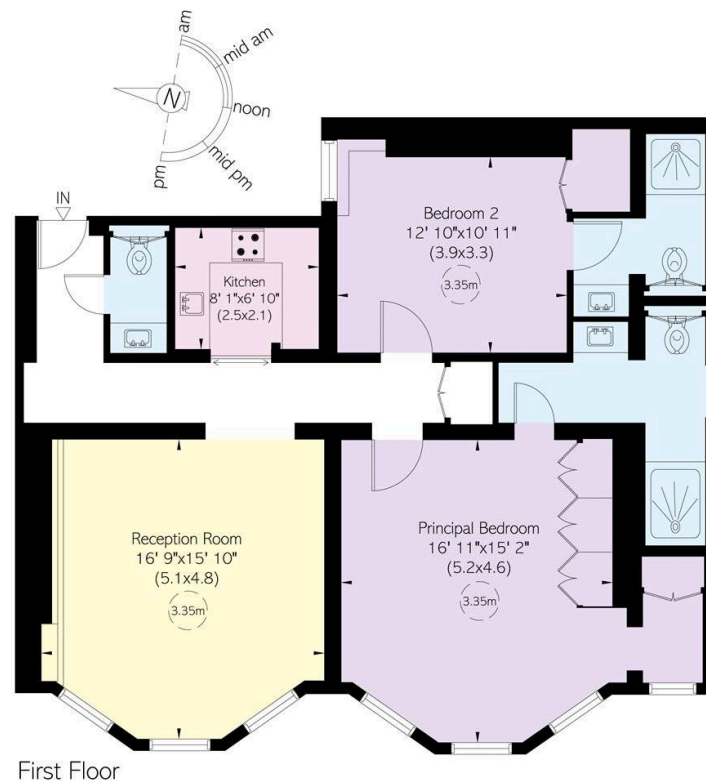
Palace Place Mansions is conveniently positioned a short walk away from the restaurants, shops and underground station of Kensington High Street. In addition, the open spaces of Kensington Gardens and Hyde Park are within easy reach.

## Palace Place Mansions, W8

**RUSSELL  
SIMPSON**

**Approximate Internal Area**  
1,119 sq ft/ 104 sq m

This plan is for layout guidance only. Not drawn to scale unless stated. Windows and door openings are approximate. Whilst every care is taken in the preparation of this plan, please check all dimensions, shapes, and compass bearings before making any decisions reliant upon them.



**RUSSELL  
SIMPSON**

---

## Contact Us

+44 (0) 20 3761 9691

13 Kensington Square  
London  
W8 5HD

[kensington@russellsimpson.co.uk](mailto:kensington@russellsimpson.co.uk)