

RUSSELL SIMPSON

Exquisite three-bedroom triplex with
feature staircase on a historic
Knightsbridge garden square

OVINGTON SQUARE
CHELSEA SW3

Ovington Square

£5,750,000

BEDROOMS 3	INTERNAL 3,359 SQ FT	OUTDOOR 516 SQ FT	COUNCIL TAX RBKC, H
BATHROOMS 3	312 SQM	EPC C	TENURE Freehold



The Property

Elegant Grade II listed family home with white stucco façade and south-west facing terrace

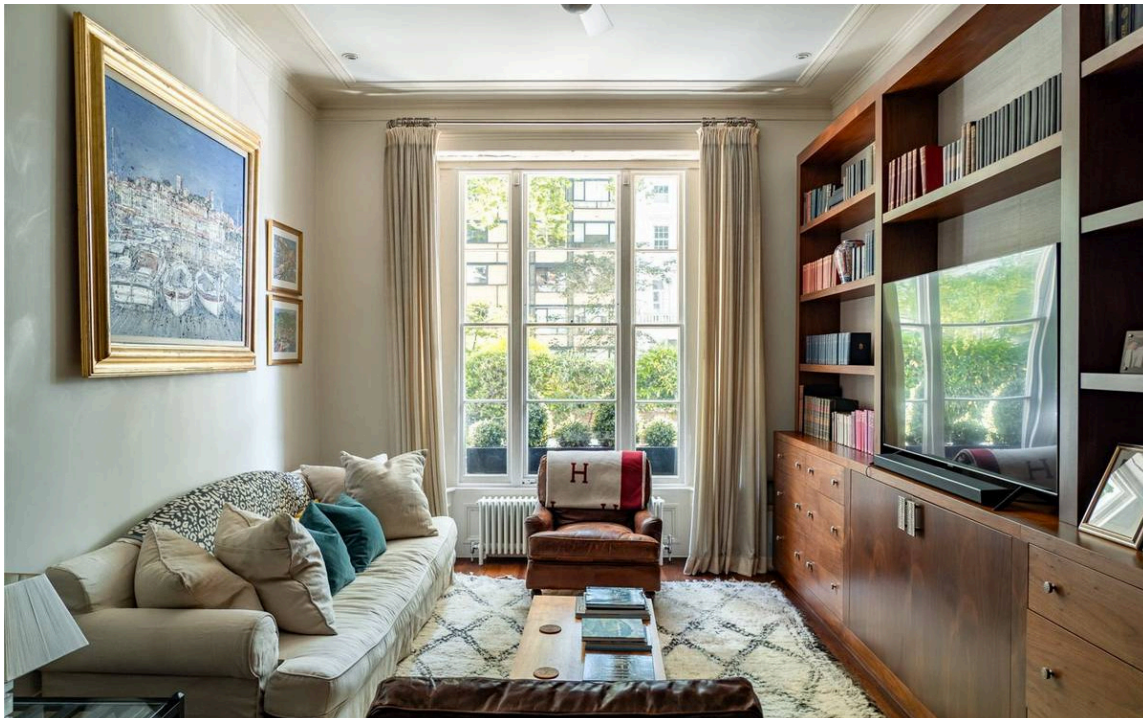
Stepping into this elegant house on the ground floor, the front door opens onto a large entrance hall. On one side is a front reception room with high ceilings and full-length sash windows overlooking the garden square. On the other side is a second reception room, with a pair of French doors opening onto two rear balconies.

img 1

Entrance Hall

img 2

Tv Snug



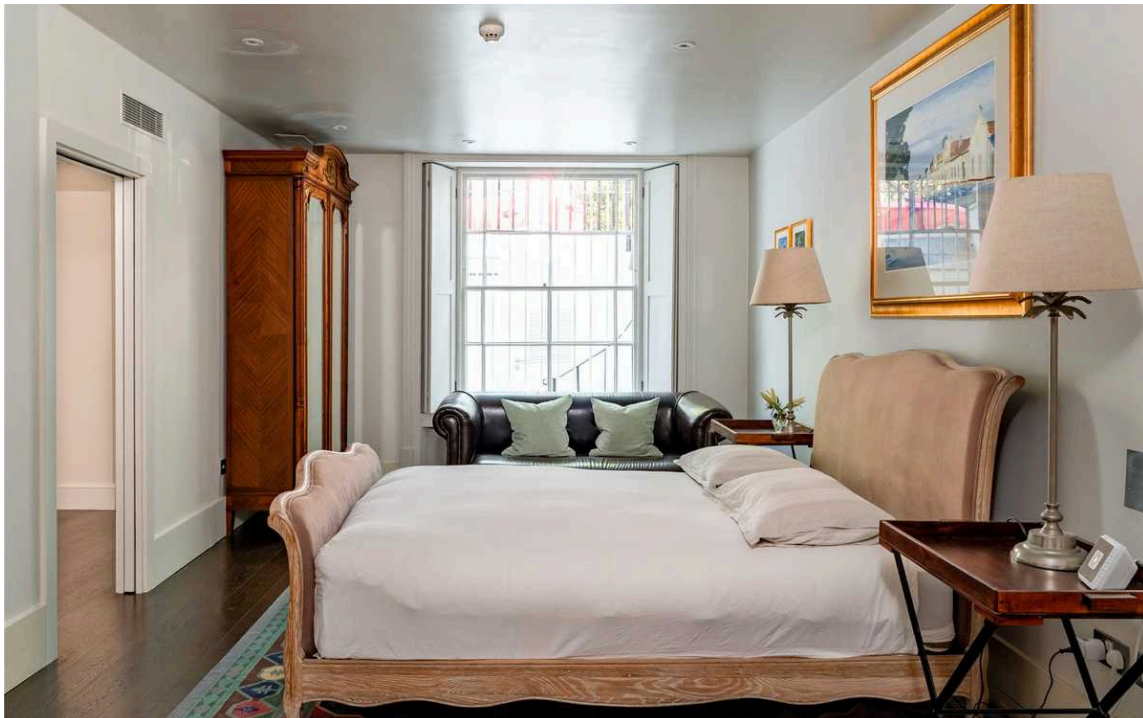


The Bedrooms

The first floor features a generous principal bedroom with an ensuite bathroom. This room also has high ceilings and windows leading onto a front balcony. Meanwhile the second ensuite bedroom on this floor is flooded with light from a pair of French doors giving access to the rear terrace.

img 1

Principal Bedroom





Indoor Spaces

The lower ground floor centres on a spacious fitted kitchen with a central island breakfast bar. This space remains bright throughout the day thanks to overhead skylights. Furthermore, this floor offers an ensuite bedroom, a guest WC, separate street access and a pair of storage vaults.

img 1

Dining Space

img 2

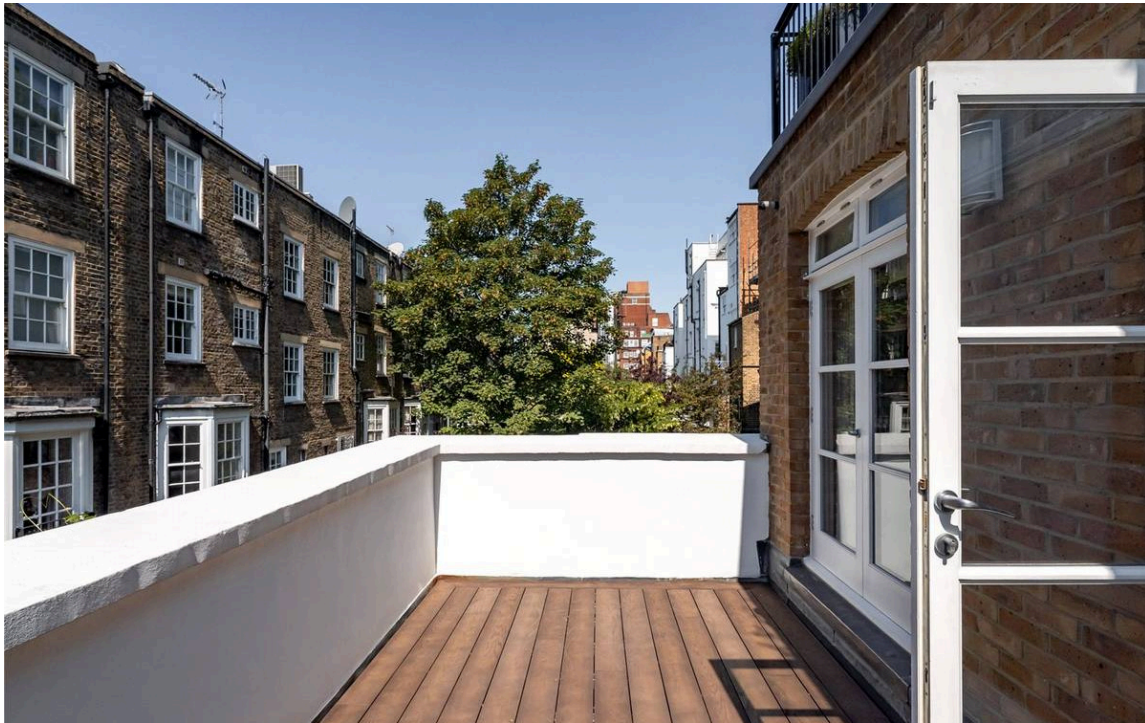
Kitchen



The Design

This spacious house is decorated in an elegant style and presented in very good condition. The traditional decoration accentuates the historic setting, mixed with modern convenience such as air conditioning. Its modern spiral staircase has been cleverly designed to bring light to each level of the house and create a striking feature.





Outdoor Spaces

The property includes a south-west facing rear terrace with wooden decking and enough space for outdoor seating. There is also a front balcony with views over the communal garden square. Residents also have the right to access the communal garden

img 1

Terrace





The Neighbourhood

Ovington Square was named after Ovington House in Hampshire and developed between 1844 – 1850. Its white stucco townhouses are decorated with Italianate designs and have been home to a range of historic characters. This includes the publisher of Charles Dickens, the mother of Oscar Wilde, as well as socialites, aristocrats, and one of London's Buddhist temples. From here, South Kensington underground station is a short walk away, while Knightsbridge station is also close. In addition, the restaurants and shops of Knightsbridge and Chelsea are within easy reach. Finally, the open spaces of Hyde Park and Kensington Gardens are nearby.



Ovington Square, SW3

**RUSSELL
SIMPSON**

Approximate Internal Area

3,359 sq ft / 312 sq m

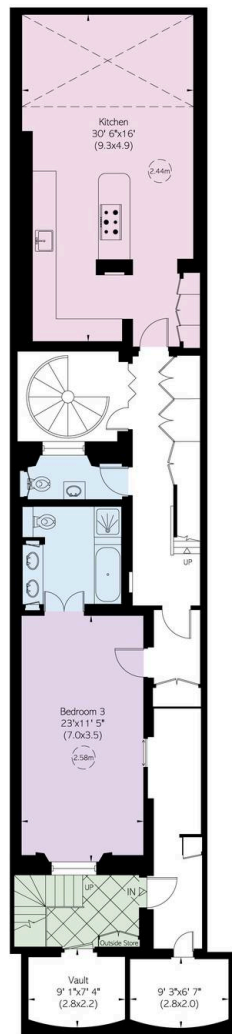
Including vaults and outside storage

65 sq ft / 6 sq m

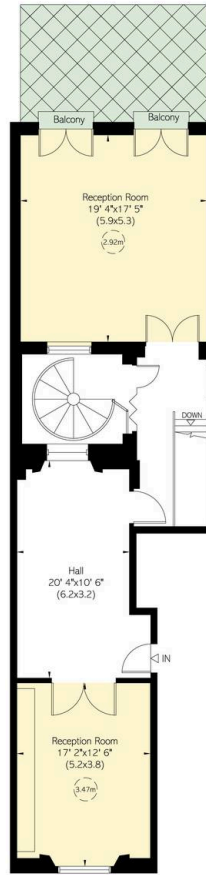
Outside Area

516 sq ft / 48 sq m

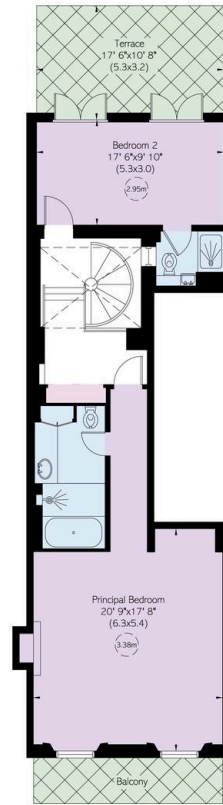
Plan is for layout guidance only. Not drawn to scale unless stated. Windows and door openings are approximate. Whilst every care is taken in the preparation of the plans, please check all dimensions, shapes, and compass bearings before making any decisions reliant upon them.



Lower Ground Floor



Ground Floor



First Floor

**RUSSELL
SIMPSON**

Contact Us

+44 (0) 20 7225 0277

Contact us

info@russellsimpson.co.uk

Sydney Street

+44 (0) 20 7225 0277

151A Sydney Street
London
SW3 6NT

chelsea@russellsimpson.co.uk

Kensington Square

+44 (0) 20 3761 9691

13 Kensington Square
London
W8 5HD

kensington@russellsimpson.co.uk