



RUSSELL SIMPSON

Grand townhouse with unique
potential on a private garden square
opposite Kensington Garden

ORME SQUARE
BAYSWATER W2

Orme Square

£7,800,000

BEDROOMS 6	INTERNAL 3,335 SQ FT	OUTDOOR 1,173 SQ FT	COUNCIL TAX Westminster City, G
BATHROOMS 5	309 SQM	EPC D	TENURE Freehold

The Property

White stucco house with wide lateral interiors, garden, lift and the chance for complete renovation

The property includes a large, west-facing garden, a front balcony on the first floor and a handsome white stucco façade. Residents also have access to the leafy communal garden at the centre of the square.





Indoor Spaces

The house consists of five storeys, from the lower ground floor to the third floor. At present there are no internal walls, providing a series of large lateral spaces that could be used for an open-plan kitchen, a spacious living area, and several well-proportioned ensuite bedrooms. It also has a lift shaft connecting all levels and high ceilings across the ground, first and second floors.

The house requires complete renovation, offering a blank canvass for an imaginative owner to create their dream home. Unlike many of its neighbours, the property is not listed, meaning it has the potential to be completely reimagined for a modern family.



Development Opportunities

It currently has planning permission for a single-story ground floor rear extension, as well as alterations to the façade and an enlarged front lightwell. Full details can be found online below.

[Planning Information \(case reference: PP-12064230\)](#)



The Neighbourhood

Orme Square was set out in 1820s and contains some of the oldest houses in Bayswater. It was named after the engraver, painter and property developer Edward Orme, who oversaw its building. Over the years it has been home to celebrated figures from culture and business, including the artist Frederic Leighton and the banker Sir Ernest Cassel.

This property was once the home to Edward Dannreuther, a well-known pianist and writer on music. The entrance to this private square is gated, creating a peaceful and secluded setting. The open spaces of Kensington Gardens are opposite, while Queensway station is a short walk away. In addition, the many restaurants and shops of Notting Hill are within easy reach.

Orme Square, W2

RUSSELL SIMPSON

Approximate Internal Area

3,335 sq ft/ 310 sq m

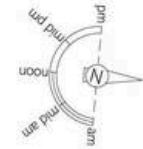
Including limited use area and current outside area

240 sq ft/ 22 sq m

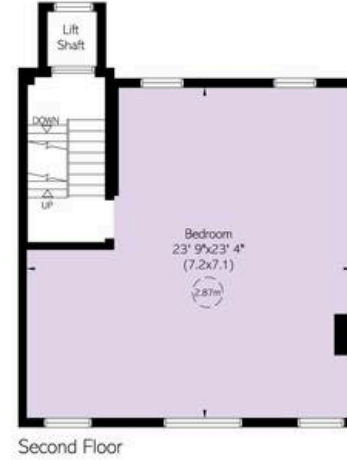
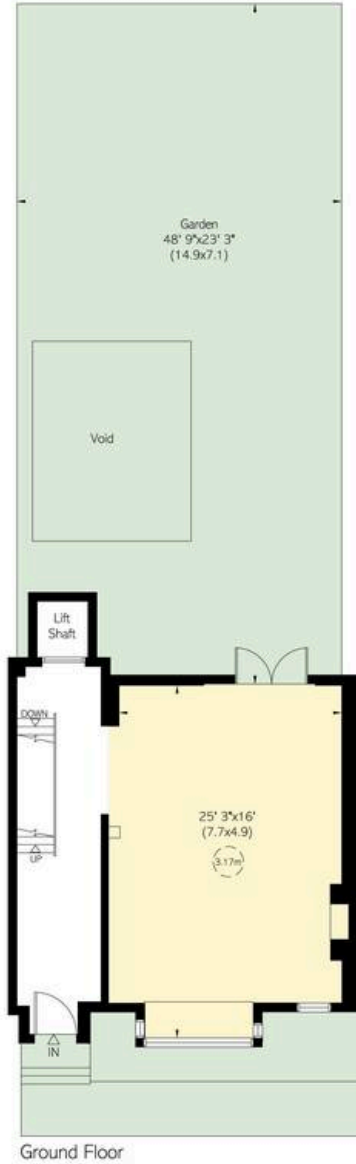
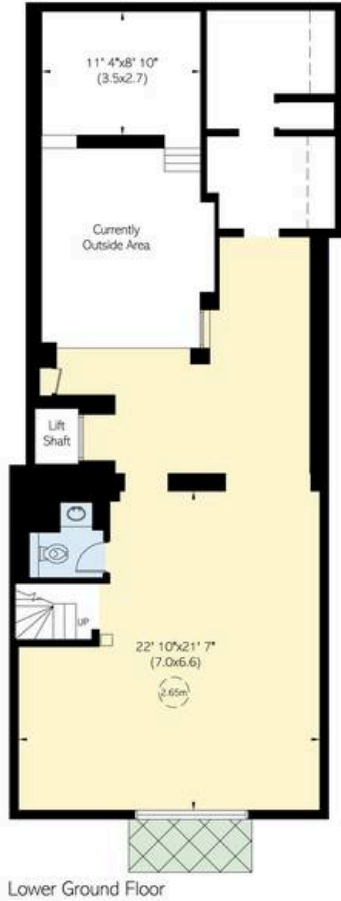
Outside Area

1,174 sq ft/ 109 sq m

This plan is for layout guidance only. Not drawn to scale unless stated. Windows and door openings are approximate. Whilst every care is taken in the preparation of this plan, please check all dimensions, shapes, and compass bearings before making any decisions reliant upon them.



 Reduced head height below 1.5m



**RUSSELL
SIMPSON**

Contact Us

+44 (0) 20 7225 0277

Contact us

info@russellsimpson.co.uk

Sydney Street

+44 (0) 20 7225 0277

151A Sydney Street

London

SW3 6NT

chelsea@russellsimpson.co.uk

Kensington Square

+44 (0) 20 3761 9691

13 Kensington Square

London

W8 5HD

kensington@russellsimpson.co.uk