



**RUSSELL
SIMPSON**

Elegant three-bedroom flat in
prestigious South Kensington

ONSLow SQUARE
SOUTH KENSINGTON SW7

Onslow Square

£3,800,000

<div>BEDROOMS</div> <div>3</div>	<div>INTERNAL</div> <div>1,504 <small>SQ FT</small></div> <div>139 <small>SQM</small></div>	<div>OUTDOOR</div> <div>—</div>	<div>COUNCIL</div> <div>RBKC</div>
<div>BATHROOMS</div> <div>2</div>		<div>EPC</div> <div>D</div>	<div>COUNCIL TAX</div> <div>H</div>
<div>TENURE</div> <div>Share of freehold</div>	<div>LEASE LENGTH</div> <div>974 <small>YEARS</small></div>	<div>GROUND RENT</div> <div>—</div>	<div>SERVICE CHARGE</div> <div>£12,404 <small>P/Y</small></div>

The Property

A beautifully presented flat on the second floor of this distinguished period building





Indoor Spaces

Stepping into this well-proportioned flat, you are greeted by a generous reception room featuring an elegant fireplace as its focal point. The room benefits from excellent natural light through large windows overlooking the leafy square, with polished wooden floors flowing throughout the principal living areas.



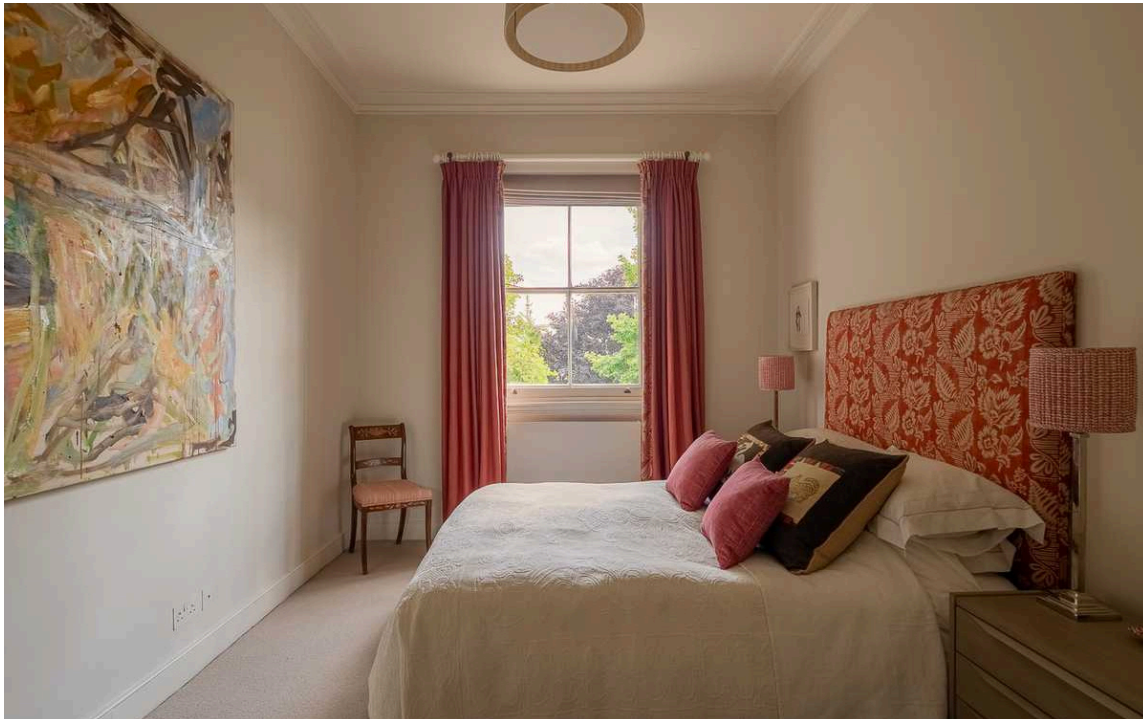
The Kitchen

The eat-in kitchen is thoughtfully designed with sleek fitted units and modern appliances, providing an ideal space for both cooking and casual dining.



The Bedrooms

The accommodation comprises of three well-proportioned bedrooms, each offering comfortable living space with fitted storage solutions. The principal bedroom benefits from an en-suite bathroom, while a further bathroom serves the flat.





The Neighbourhood

Additional storage areas on the lower ground floor provide practical space, while the building benefits from lift access and the services of a porter.

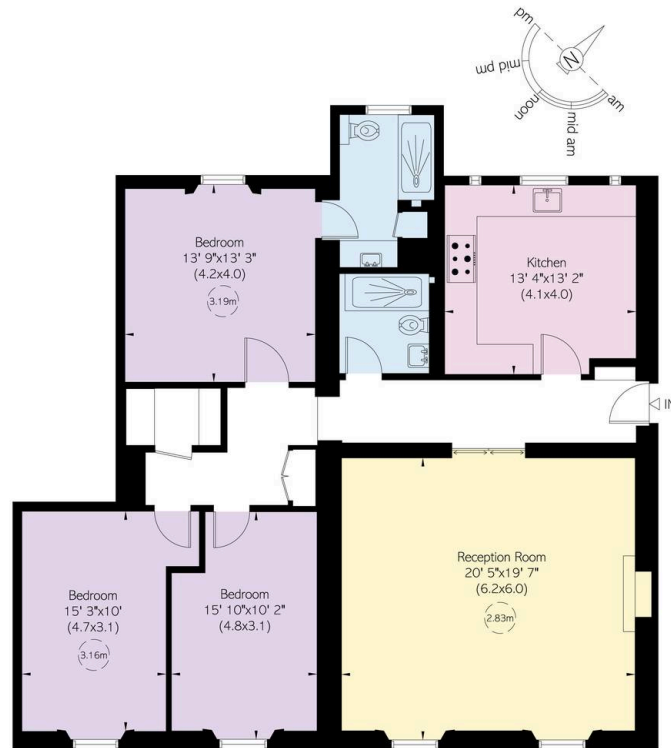
Onslow Square is a quiet residential address in the heart of South Kensington, featuring elegant period terraces surrounding a charming garden square. South Kensington Underground station is moments away, providing direct access to the Piccadilly, Circle and District lines. The world-renowned museums of Exhibition Road are within easy walking distance, while the sophisticated shops and restaurants of the King's Road and Knightsbridge are nearby. This prestigious address combines the tranquillity of a garden square with excellent transport links and cultural amenities.

Onslow Square, SW7

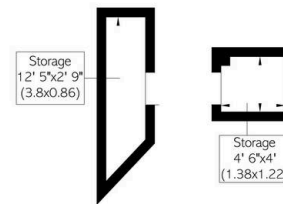
**RUSSELL
SIMPSON**

Approximate Internal Area
1,504 sq ft/ 140 sq m

This plan is for layout guidance only. Not drawn to scale unless stated. Windows and door openings are approximate. Whilst every care is taken in the preparation of this plan, please check all dimensions, shapes, and compass bearings before making any decisions reliant upon them.



Second Floor



Lower Ground Floor

**RUSSELL
SIMPSON**

Contact Us

+44 (0) 20 7225 0277

151A Sydney Street
London
SW3 6NT

chelsea@russellsimpson.co.uk

In accordance with the Property Mis-Description Act 1991, the following details have been prepared in good faith, and are not intended to constitute part of an offer or contract. Any information contained herein (whether in the text, plans or photographs) is given in good faith but should not be relied upon as being a statement of representation of fact. Nothing in these Particulars shall be deemed to be a statement that the property is in good condition or otherwise nor that any services or facilities are in good working order. Any measurements of distances referred to herein are approximate only. October 2021