

RUSSELL SIMPSON

Elegant three-bedroom flat with
access to a communal garden square
in South Kensington

ONSLow SQUARE
SOUTH KENSINGTON SW7

Onslow Square

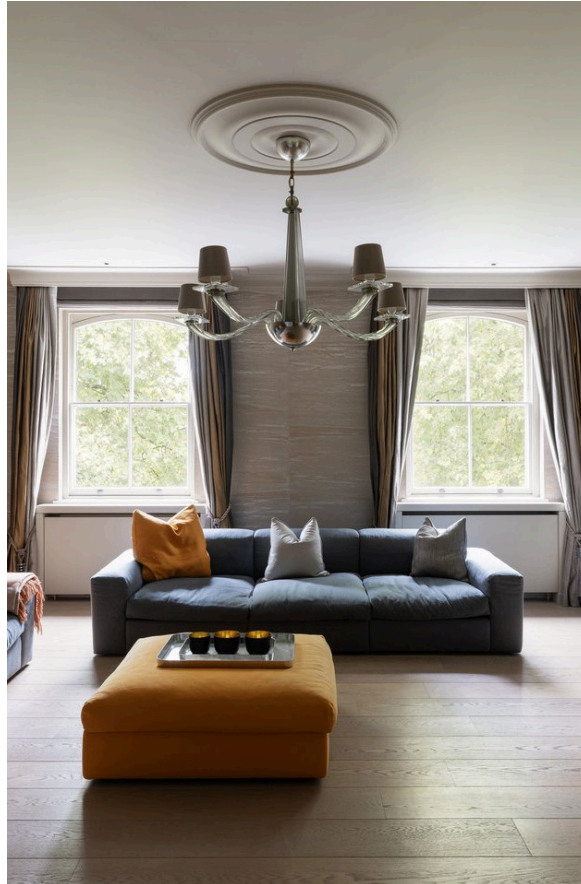
£2,950,000

<div>BEDROOMS</div> <div>3</div>	<div>INTERNAL</div> <div>1,376 <small>SQ FT</small></div> <div>127 <small>SQM</small></div>	<div>OUTDOOR</div> <div>—</div>	<div>COUNCIL</div> <div>RBKC</div>
<div>BATHROOMS</div> <div>3</div>		<div>EPC</div> <div>C</div>	<div>COUNCIL TAX</div> <div>H</div>
<div>TENURE</div> <div>Leasehold</div>	<div>LEASE LENGTH</div> <div>165 <small>YEARS</small></div>	<div>GROUND RENT</div> <div>—</div>	<div>SERVICE CHARGE</div> <div>£8,461 <small>P/Y</small></div>

The Property

Tasteful flat with spacious and contemporary interiors on a prestigious and sought-after street

The flat has been decorated in a sophisticated contemporary style with wooden floors throughout.

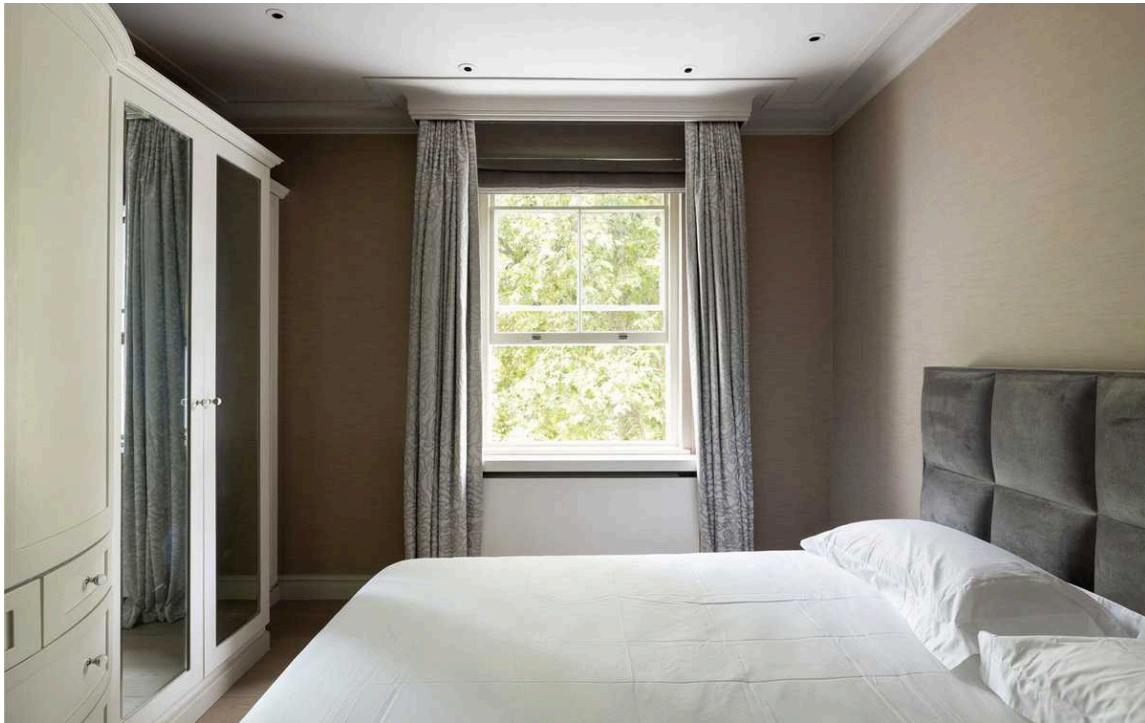




Indoor Spaces

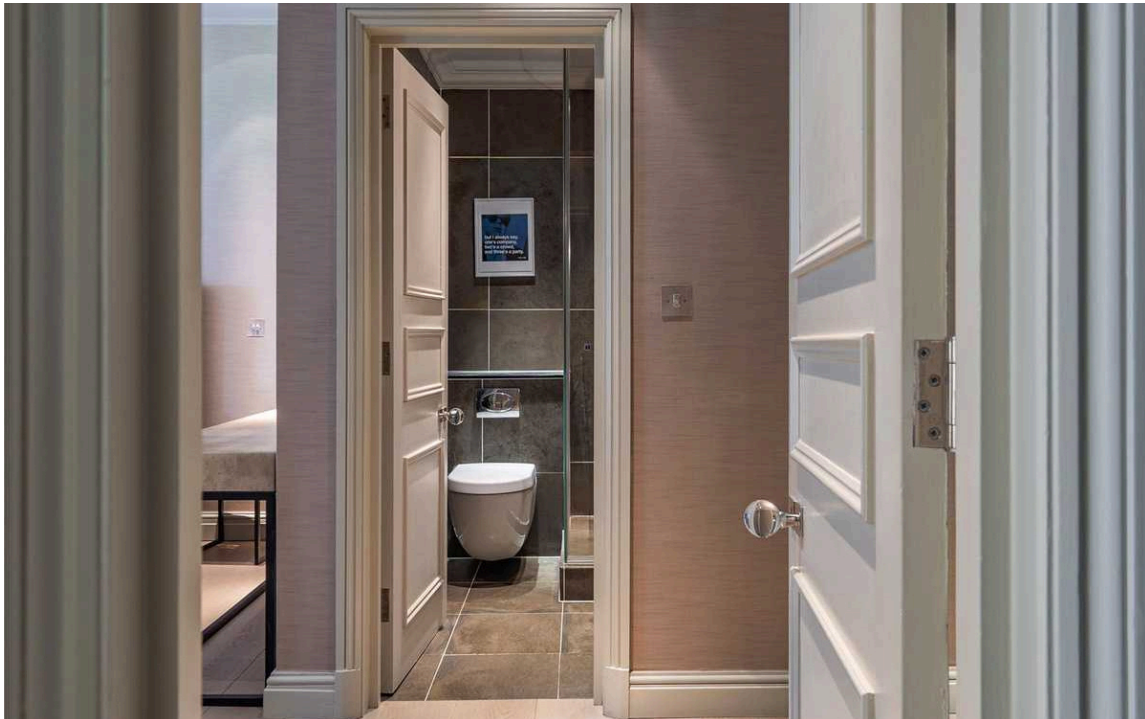
Entering the flat on the second floor, the front hall opens onto a well-proportioned reception room. This room includes south-east facing sash windows overlooking the garden square, as well as separate dining and seating spaces. Opposite is a fitted kitchen with wooden units and a breakfast area.





Indoor Spaces

The other half of the flat features three bedrooms. The principal bedroom has an ensuite bathroom and inbuilt storage space. The second bedroom is also ensuite, while the third bedroom has a bathroom opposite.





The Neighbourhood

Residents have access to the beautiful communal garden at the centre of the square.

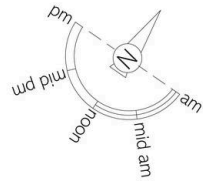
Onslow Gardens is a grand collection of streets surrounding a group of garden squares. These streets are mostly lined in Victorian townhouses with white stucco dressings and pillared porticoes.

From here, the restaurants and shops on the Old Brompton Road and the Fulham Road are close. In addition, the flats is conveniently positioned for South Kensington underground station and the neighbourhood's numerous world-class cultural institutions.



img 1

Communal Garden



Onslow Square, SW7

**RUSSELL
SIMPSON**

Approximate Internal Area
1,376 sq ft/ 128 sq m

This plan is for layout guidance only. Not drawn to scale unless stated. Windows and door openings are approximate. Whilst every care is taken in the preparation of this plan, please check all dimensions, shapes, and compass bearings before making any decisions reliant upon them.



Second Floor

**RUSSELL
SIMPSON**

Contact Us

+44 (0) 20 7225 0277

151A Sydney Street
London
SW3 6NT

chelsea@russellsimpson.co.uk

In accordance with the Property Mis-Description Act 1991, the following details have been prepared in good faith, and are not intended to constitute part of an offer or contract. Any information contained herein (whether in the text, plans or photographs) is given in good faith but should not be relied upon as being a statement of representation of fact. Nothing in these Particulars shall be deemed to be a statement that the property is in good condition or otherwise nor that any services or facilities are in good working order. Any measurements of distances referred to herein are approximate only. October 2021