

## **RUSSELL SIMPSON**

Elegant three-bedroom flat with  
access to a communal garden square  
in South Kensington

ONSLow SQUARE  
SOUTH KENSINGTON SW7

# Onslow Square

£3,200,000

BEDROOMS 3	INTERNAL 1,376 SQ FT	OUTDOOR —	COUNCIL RBKC
BATHROOMS 3	127 SQM	EPC C	COUNCIL TAX H
TENURE Leasehold	LEASE LENGTH 165 YEARS	GROUND RENT —	SERVICE CHARGE £12,519 P/Y

## The Property

Tasteful flat with spacious and contemporary interiors on a prestigious and sought-after street

The flat has been decorated in a sophisticated contemporary style with wooden floors throughout.

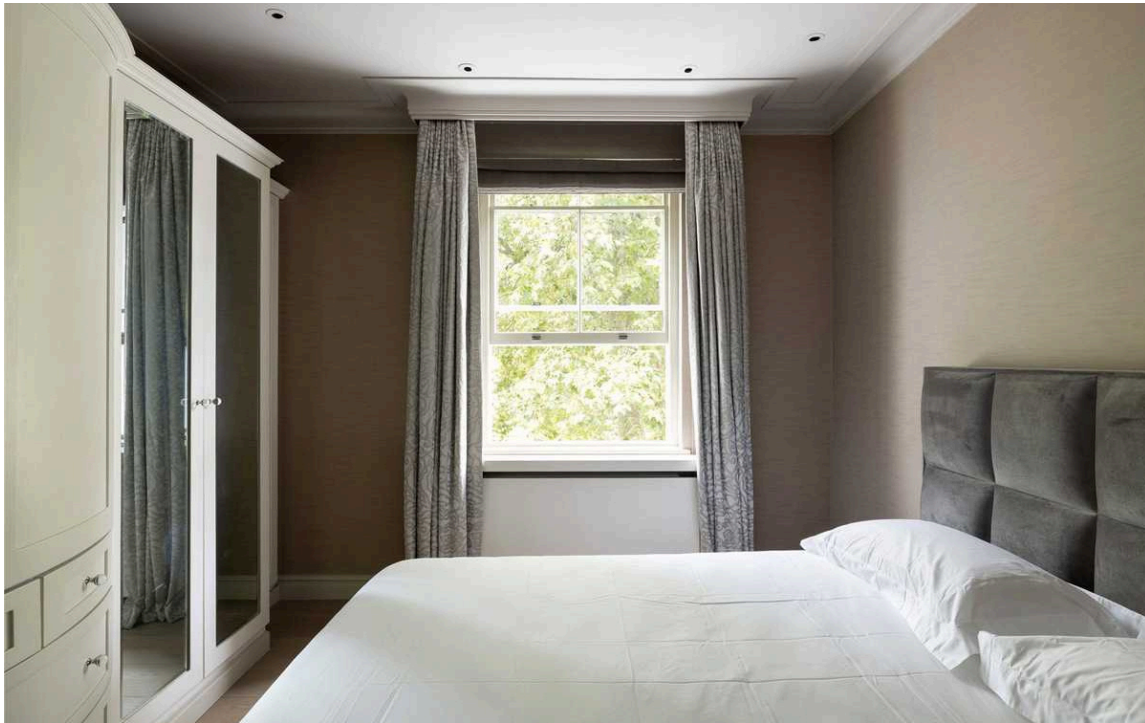




## Indoor Spaces

Entering the flat on the second floor, the front hall opens onto a well-proportioned reception room. This room includes south-east facing sash windows overlooking the garden square, as well as separate dining and seating spaces. Opposite is a fitted kitchen with wooden units and a breakfast area.





## Indoor Spaces

The other half of the flat features three bedrooms. The principal bedroom has an ensuite bathroom and inbuilt storage space. The second bedroom is also ensuite, while the third bedroom has a bathroom opposite.





## The Neighbourhood

Residents have access to the beautiful communal garden at the centre of the square.

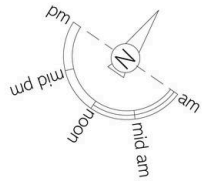
Onslow Gardens is a grand collection of streets surrounding a group of garden squares. These streets are mostly lined in Victorian townhouses with white stucco dressings and pillared porticoes.

From here, the restaurants and shops on the Old Brompton Road and the Fulham Road are close. In addition, the flats is conveniently positioned for South Kensington underground station and the neighbourhood's numerous world-class cultural institutions.



img 1

Communal Garden



## Onslow Square, SW7

**RUSSELL  
SIMPSON**

**Approximate Internal Area**  
1,376 sq ft/ 128 sq m

This plan is for layout guidance only. Not drawn to scale unless stated. Windows and door openings are approximate. Whilst every care is taken in the preparation of this plan, please check all dimensions, shapes, and compass bearings before making any decisions reliant upon them.



Second Floor

**RUSSELL  
SIMPSON**

---

## Contact Us

+44 (0) 20 7225 0277

Contact us

[info@russellsimpson.co.uk](mailto:info@russellsimpson.co.uk)

---

## Sydney Street

+44 (0) 20 7225 0277

151A Sydney Street

London

SW3 6NT

[chelsea@russellsimpson.co.uk](mailto:chelsea@russellsimpson.co.uk)

---

## Kensington Square

+44 (0) 20 3761 9691

13 Kensington Square

London

W8 5HD

[kensington@russellsimpson.co.uk](mailto:kensington@russellsimpson.co.uk)